



## BX2423

# 2025-2026 RAM 1500 (Includes Rebel/RHO) (Includes Adaptive Cruise Control, Shuttters, & Turbo) Installation Instructions

If the listed fit information for this baseplate does not include the year/make/model/features of your vehicle, please contact us at (402) 385-3051 to verify.

**Please read BOTH these Installation Instructions and the General Information sheet prior to installing or operating this equipment.**

Serial Number

**Attachment Tab Height: 18.5"**

**Attachment Tab Width: 38"**

**Please ensure tow bar being used is compatible with the baseplate tab width.**



If the front of your vehicle looks different than this, please contact us at (402) 385-3051.

1. Blue Ox® towing products and accessories are intended to be installed by Blue Ox® Dealers who are familiar with our products and have the equipment and knowledge necessary to do "fit work". If needed, Blue Ox® Dealers can be found at [www.blueox.com](http://www.blueox.com) or by contacting our Customer Care Department at (402) 385-3051.
2. Many Blue Ox® baseplates are designed to use existing holes and hardware to mount the baseplate to the towed vehicle. Even though bolts are there, do not assume they are adequate for baseplate mounting. Always use the hardware supplied in the hardware kit and existing hardware as specified in the installation instructions.



## WARNING

Failure to read and follow these instructions could result in separation of the towed vehicle from the tow bar, causing property damage, loss of towed vehicle, personal injury or death.

**Reference your vehicle owner's manual for manufacturer's towing specifications.**

BX2423  
2025-2026 Ram 1500 (Includes Rebel/RHO)  
(Includes Adaptive Cruise Control, Turbo & Shutters)  
Installation Instructions

Bolt Torque Specifications		
Torque in Foot-Pounds for Inch Bolts		
Bolt Size	Grade 5	Grade 8
1/4"	10	14
5/16"	19	29
3/8"	33	47
7/16"	54	78
1/2"	78	119
5/8"	154	230
3/4"	257	380

Bolt Torque Specifications		
Torque in Foot-Pounds for Metric Bolts		
Bolt Size	Grade 8.8	Grade 10.9
6MM	6	8
8MM	16	22
10MM	31	40
12MM	54	70
14MM	89	117
16MM	161	230
18MM	222	318

**Instruction Notes:** The fascia/bumper and wheel well piece are removed and reinstalled for the baseplate installation. The tow hooks are removed and stay off for baseplate installation. Some drilling and trimming is required.

Place all components that are removed on a flat, sturdy surface. All items will be reinstalled unless otherwise noted after the baseplate is installed.

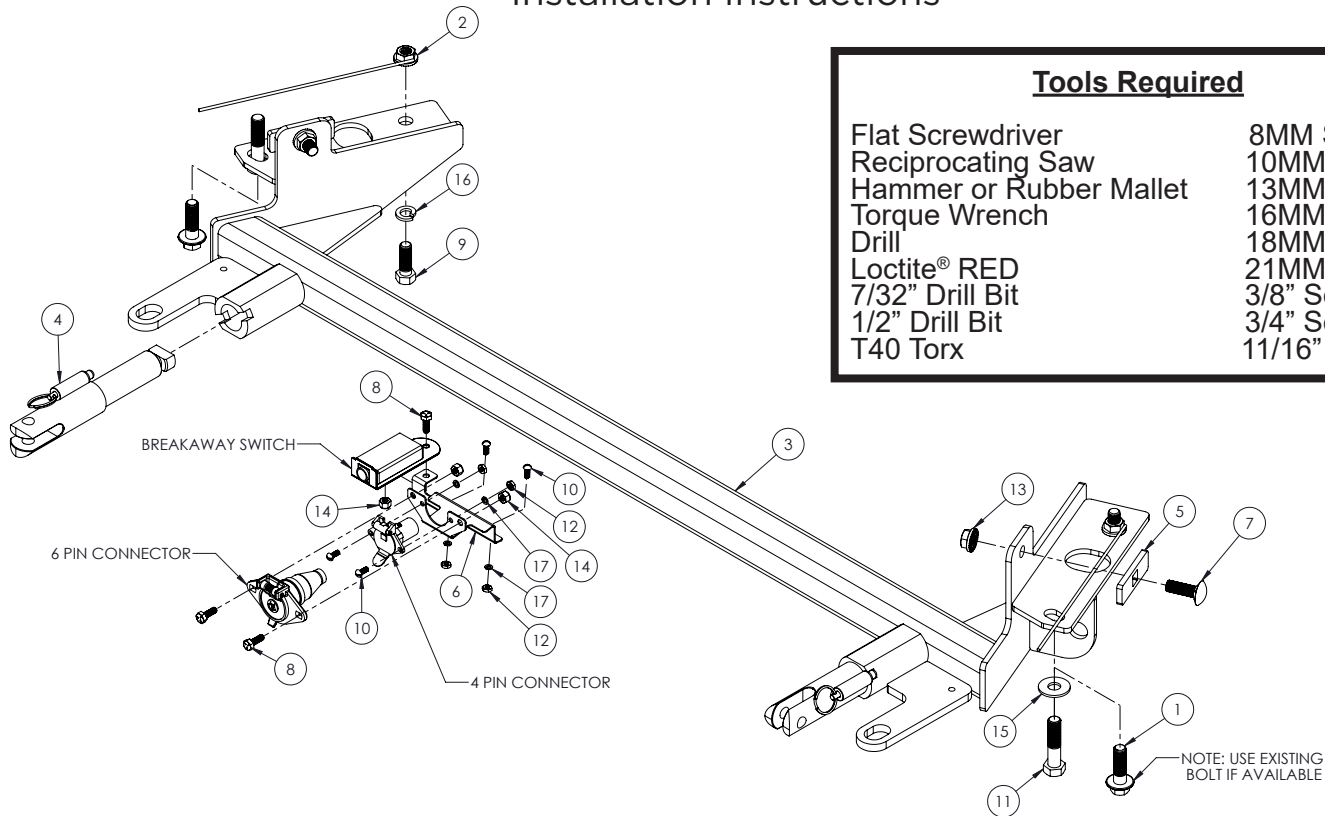
The dimensional variations between otherwise identical vehicles can be considerable. While the baseplate was designed for easy installation, it may be necessary to tailor the baseplate slightly to compensate for vehicle manufacturer's tolerances.

The BX8848 Tail Light Wiring Kit is recommended for this vehicle.

## **NOTICE**

- Handling of some cosmetic parts when installing this product may require the use of protective covers, rags, specialty tools, etc. to prevent damage.
- When using power drills be aware of the dangers of torque and drill bit length.
- When using a reciprocating saw be aware of objects behind the cutting surface.
- Use a good quality paint to spray cut edges of frame to prevent rusting.
- Be sure that **ALL** electrical connections are plugged in and accessories are functioning properly before reinstalling the fascia.
- The baseplate is computer tested to your vehicle's GVWR, exceeding this weight will void the manufacturer's warranty.
- Be sure to use a sufficient amount of Loctite® Red on all bolt threads before tightening. Tighten all bolts according to the torque chart provided unless specified.
- Dealer or installer be certain the user receives these instruction sheets.
- If the baseplate is in an accident, it must be replaced. **DO NOT** use it again! An accident can cause unseen damage and using it again could result in more damage or serious injury. **DO NOT** use the baseplate if it is damaged or missing parts.

BX2423  
2025-2026 Ram 1500 (Includes Rebel/RHO)  
(Includes Adaptive Cruise Control, Turbo & Shutters)  
Installation Instructions



Item No.	Part No.	Description	Qty.
1.....	Existing.....	14MM-2MM x 50MM Bolt .....	2
2.....	61-8741 .....	1/2"-13 Whiz Nut w/ 10" Wire .....	2
3.....	61-8741 .....	BX2423 Baseplate.....	1
4.....	62-3469 .....	Attachment Tab Assembly with Hole .....	2
5.....	101-10556 .....	1/4" x 1" x 3" Plate w/ 1/2" Square Hole .....	2
6.....	101-11297 .....	Electrical Bracket with Breakaway Mount .....	1
7.....	201-0012 .....	1/2"-13 x 1-1/2" Carriage Bolt, Grade 5, ZP .....	2
8.....	201-0050 .....	1/4"-20 x 3/4" Hex Head Bolt, Grade 5, ZP .....	3
9.....	201-0051 .....	1/2"-13 x 1-1/2" Hex Head Bolt, Grade 5.....	2
10.....	201-0192 .....	#10-32 1/2" Round Slotted Head Screw.....	4
11.....	201-0813 .....	14MM-2MM x 50MM Hex Bolt, Grade 10.9.....	2
12.....	202-0047 .....	#10-32 Hex Nut .....	4
13.....	202-0072 .....	1/2"-13 Hex Flange Whiz Lock Nut, ZP .....	2
14.....	202-0102 .....	1/4"-20 Hex Nylon Nut, ZP .....	3
15.....	203-0005 .....	1/2" Flat Washer .....	2
16.....	203-0012 .....	1/2" Lock Washer .....	2
17.....	203-0054 .....	#10 Lock Washer, ZP .....	2
18.....	226-0049(not shown) .....	Class IV Safety Cables.....	2
19.....	229-0512(not shown) .....	1/2" Quicklink, ZP .....	2
20.....	290-0275(not shown) .....	8" Nylon Cable Tie.....	6
21.....	290-0437(not shown) .....	Black Cap Plug Receiver.....	2

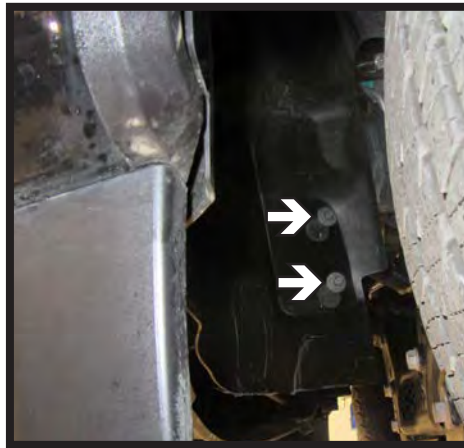
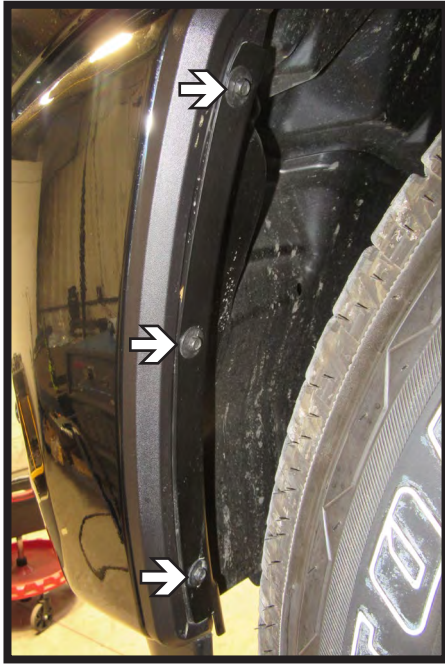
**Important:**

Use only genuine factory replacement parts on your baseplate. Do **NOT** substitute homemade or non-typical parts. If a bolt is lost or in need of replacement, for your safety and the preservation of your baseplate, be sure to use a replacement bolt of the same grade (In most cases it will be Grade 5, please reference the parts list above). Replacement parts may be ordered through your nearest Blue Ox® Dealer or Distributor. Failing to follow and/or altering these installation instructions in either installation or required equipment will void the manufacturer's warranty. Towing behind a non-motorized vehicle will void the warranty.

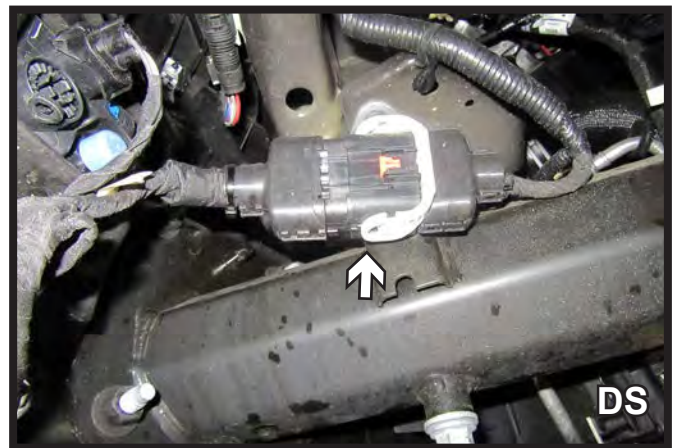


BX2423  
2025-2026 Ram 1500 (Includes Rebel/RHO)  
(Includes Adaptive Cruise Control, Turbo & Shuttters)  
Installation Instructions

**Non-Rebel/RHO Bumper Removal:**

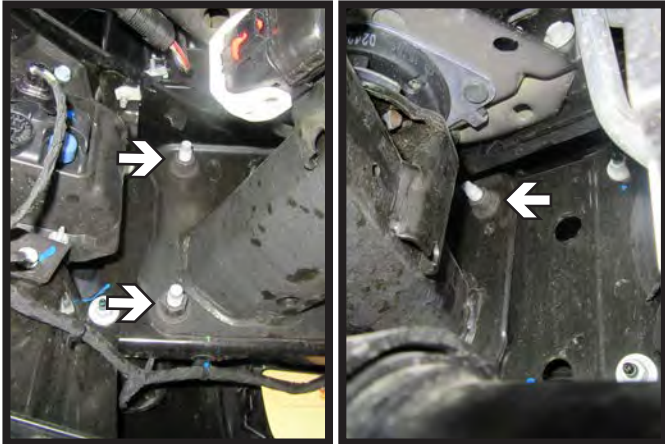


1. Using an 8MM socket, remove the five (5) bolts from the wheel well. Remove plastic piece and set aside to be reinstalled later. Do this on both sides of the vehicle.

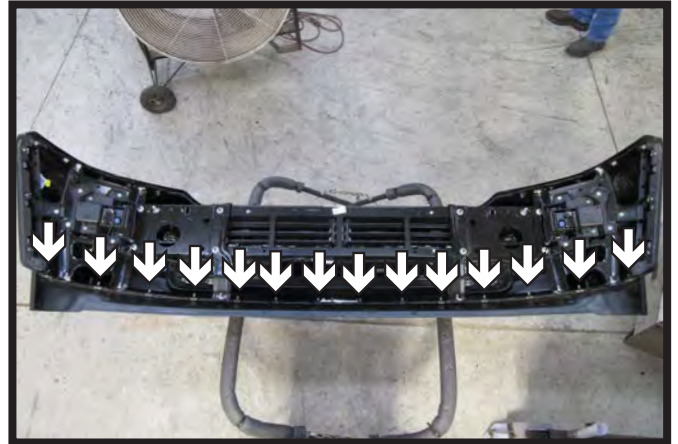


2. Unplug the one (1) electrical connection on each side of the vehicle.

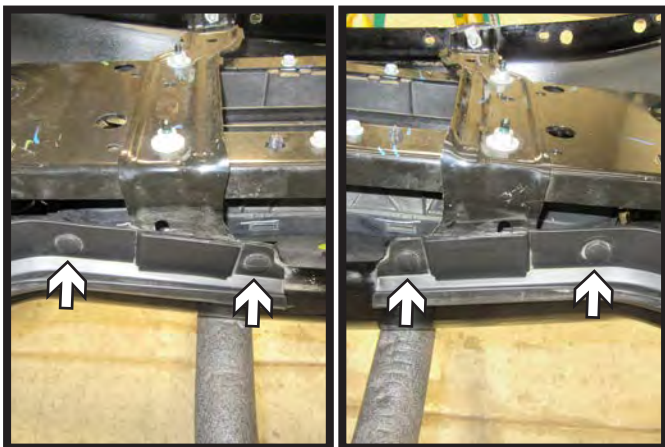
BX2423  
2025-2026 Ram 1500 (Includes Rebel/RHO)  
(Includes Adaptive Cruise Control, Turbo & Shutters)  
Installation Instructions



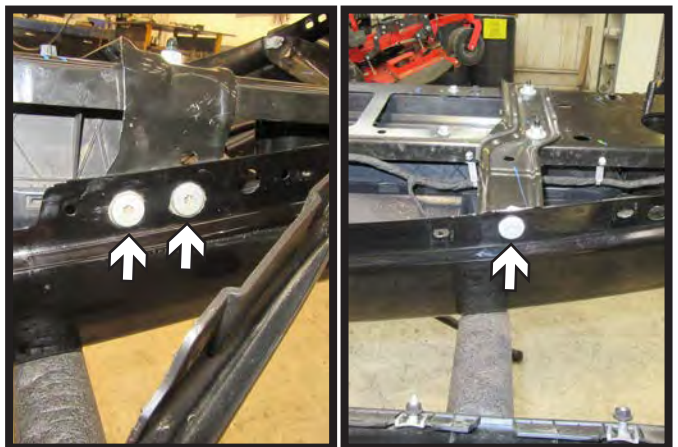
3. Using an 18MM socket, remove the three (3) bolts from the back of the bumper. Do this on both sides of the vehicle. Remove bumper and set aside to be reinstalled later.



4. Using a 10MM socket, remove the fourteen (14) nuts from the bottom of the bumper. Remove bumper valence and set aside to be reinstalled later.



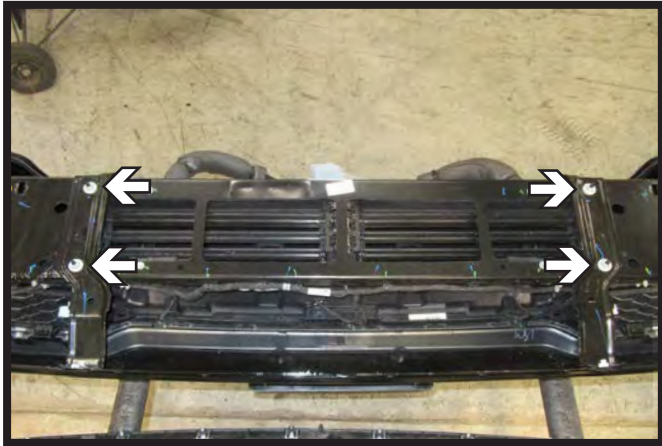
5. Remove the four (4) push pins, two (2) on each side, from the rubber piece on the top of the bumper.



6. Pull back rubber piece. Using a T40 Torx, remove the three (3) bolts from the bumper. There are two (2) on the top and one (1) on the bottom. Do this on both sides of the bumper.



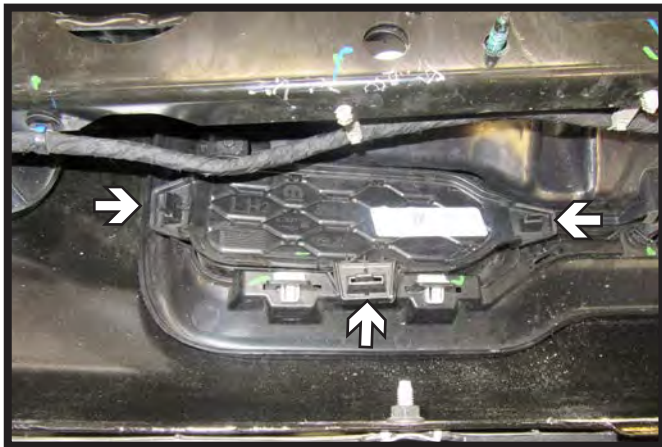
BX2423  
2025-2026 Ram 1500 (Includes Rebel/RHO)  
(Includes Adaptive Cruise Control, Turbo & Shuttters)  
Installation Instructions



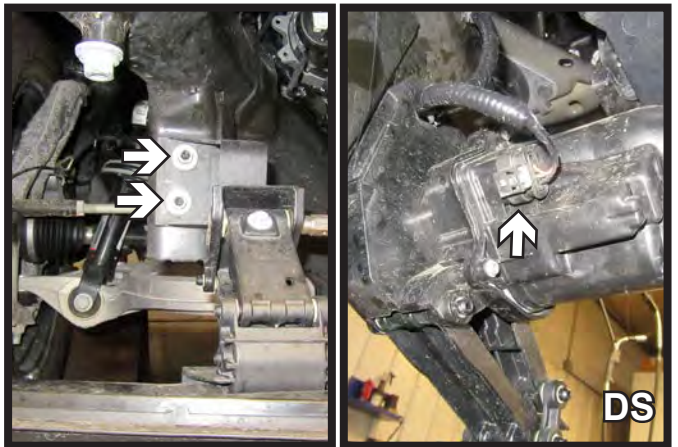
7. Using a 13MM socket, remove the four (4) nuts from the brackets on the back of the bumper. Remove brackets, they will not be reinstalled.



8. Reinstall the four (4) push pins on the top of the bumper and the bumper valence to the bottom of the bumper.

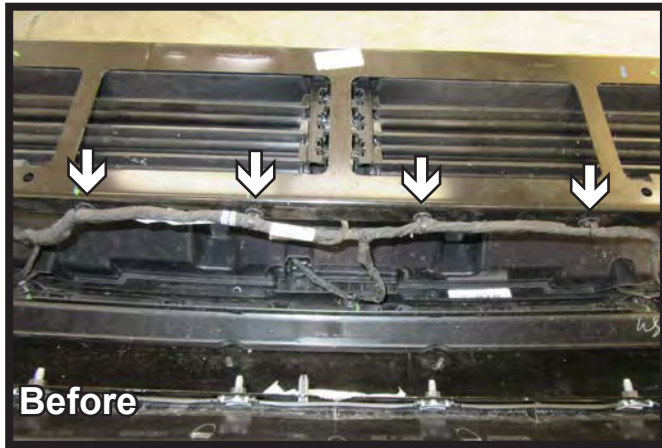


9. **Vehicles without Tow Hooks:** Unclip the three (3) clips from the tow hook cover and push towards the back of the bumper to remove. Do this on both sides of the bumper.



10. Using a 13MM socket, remove the two (2) nuts from the automatic valence. Do this on both sides of the vehicle. Unplug the electrical connection on the driver side and remove valence and set aside to be reinstalled later.

BX2423  
2025-2026 Ram 1500 (Includes Rebel/RHO)  
(Includes Adaptive Cruise Control, Turbo & Shuttters)  
Installation Instructions



11. Unclip the wire loom from the bottom of the bracket on the back side of the bumper and reinstall to the forward side of the bracket as shown.



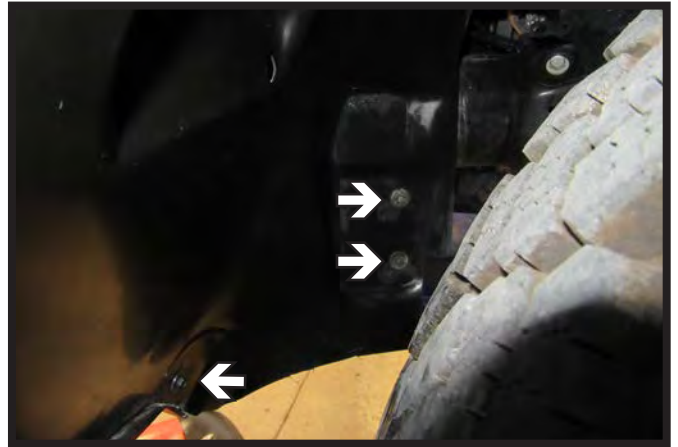
12. In necessary, use a reciprocating saw to trim the indicated area from the metal piece on the back of the bumper as shown. Do this on both sides of the vehicle.

**Continue to page 11**



BX2423  
2025-2026 Ram 1500 (Includes Rebel/RHO)  
(Includes Adaptive Cruise Control, Turbo & Shuttters)  
Installation Instructions

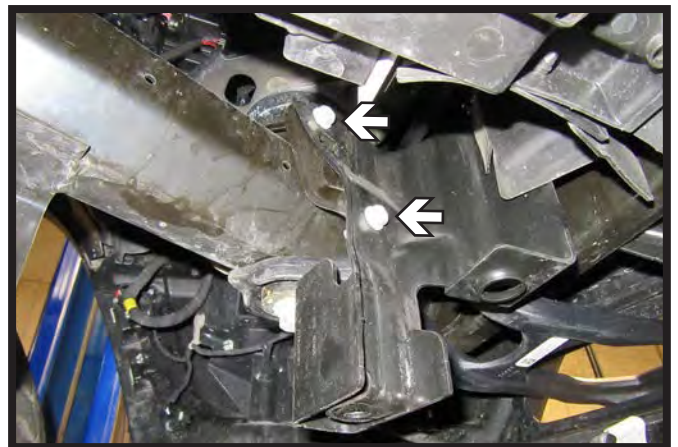
**Rebel/RHO Bumper Removal:**



1. Using an 8MM socket, remove the five (5) bolts from the wheel well. Do this on both sides of the vehicle.



2. **RHO Models:** Using a 16MM socket, remove the six (6) bolts from the belly pan. There are four (4) along the back and two (2) in the front. Remove belly pan and set aside to be reinstalled later.



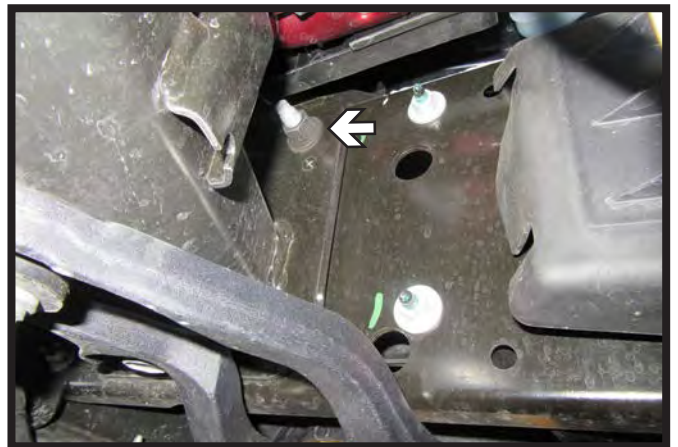
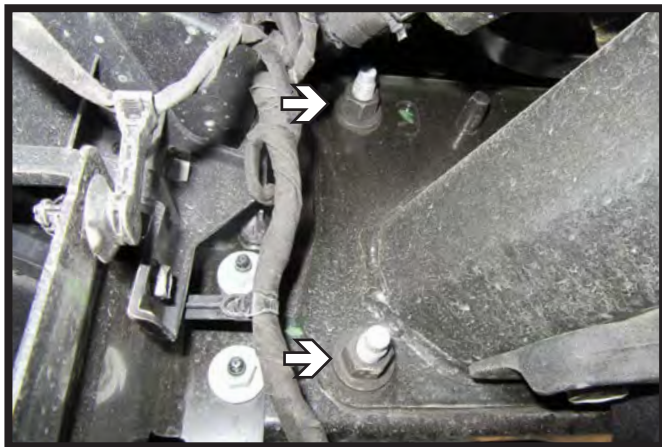
3. **RHO Models:** Using a 13MM socket, remove the two (2) bolts from the belly pan bracket. Remove bracket and set aside to be reinstalled later. Do this on both sides of the vehicle.



BX2423  
2025-2026 Ram 1500 (Includes Rebel/RHO)  
(Includes Adaptive Cruise Control, Turbo & Shuttters)  
Installation Instructions

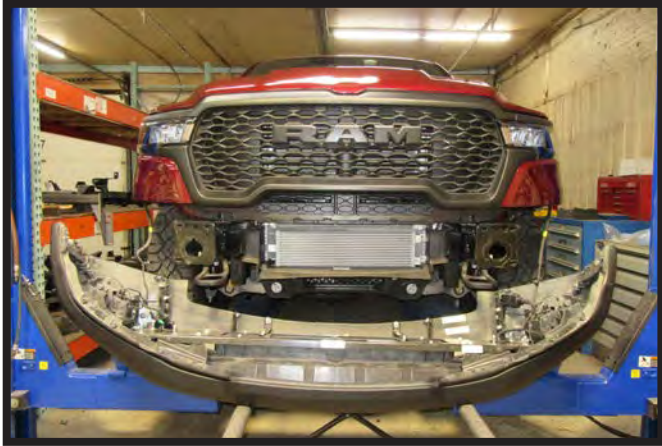


4. Unplug the one (1) electrical connection on each side of the vehicle.

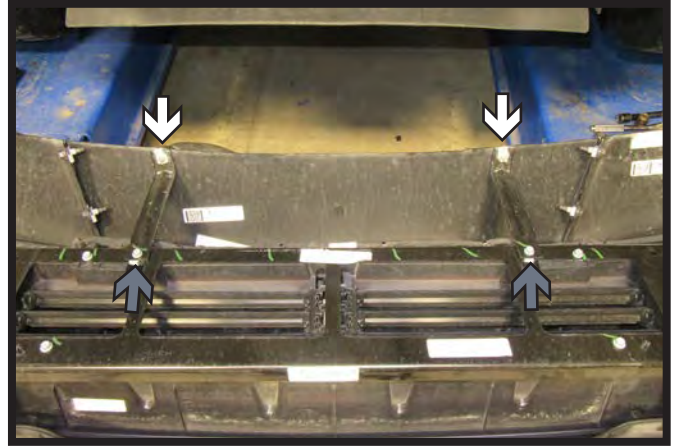


5. Using an 18MM socket, Remove the three (3) nuts from the back side of the bumper. Do this on both sides of the vehicle.

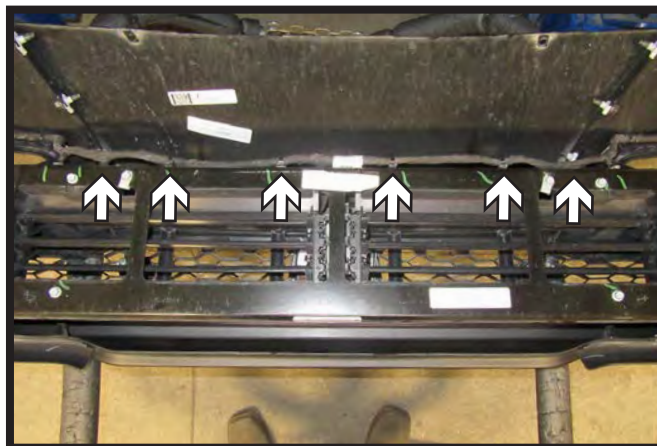
BX2423  
2025-2026 Ram 1500 (Includes Rebel/RHO)  
(Includes Adaptive Cruise Control, Turbo & Shutters)  
Installation Instructions



6. Remove bumper but do not disconnect upper electrical connection on each side. Place bumper out of the way for baseplate installation on a stand or other safe option.



7. Using a T40 Torx remove the two (2) bolts (white) from the bottom of the brackets on the backside of the fascia. Then using a 10MM socket, remove the two (2) bolts (gray) from the top of the brackets. Remove brackets, they will not be reinstalled.



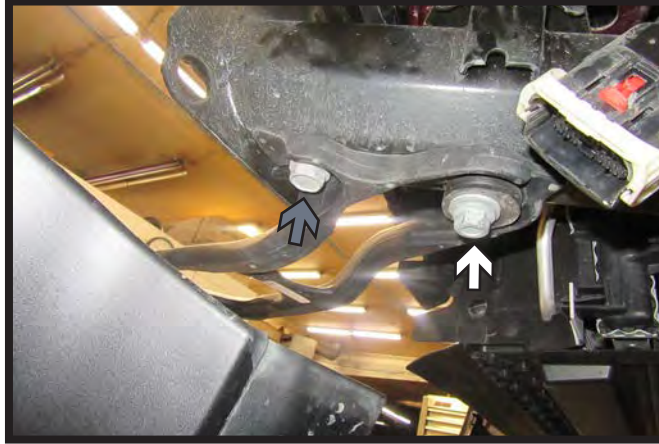
8. Remove the six (6) clips attaching the wire loom to the bottom of the shutter housing on the back of the bumper.

**Continue to page 11**

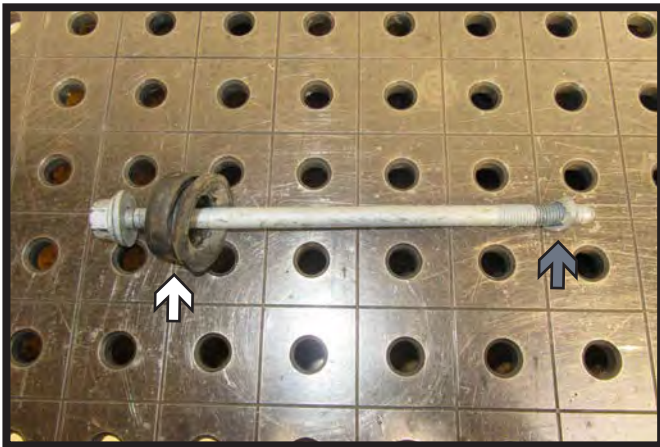


BX2423  
2025-2026 Ram 1500 (Includes Rebel/RHO)  
(Includes Adaptive Cruise Control, Turbo & Shuttters)  
Installation Instructions

**Baseplate Installation:**



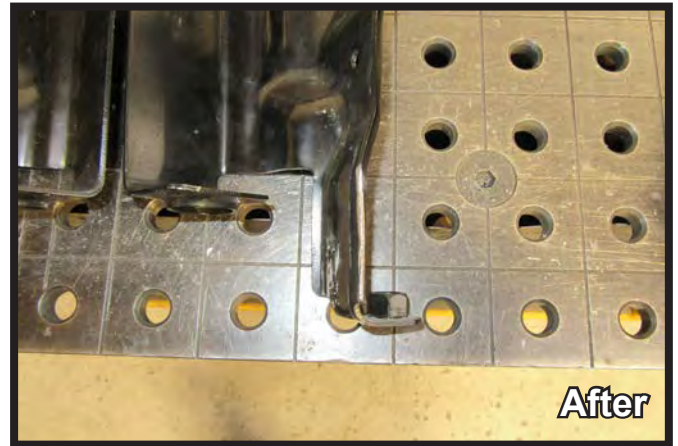
1. **Trucks with Tow Hooks:** Using a 21MM socket remove the front bolt (gray), and then using an 18MM socket remove the back bolt (white) attaching the tow hook to the frame. Remove tow hook. Do this on both sides of the vehicle. The tow hooks will not be reinstalled.



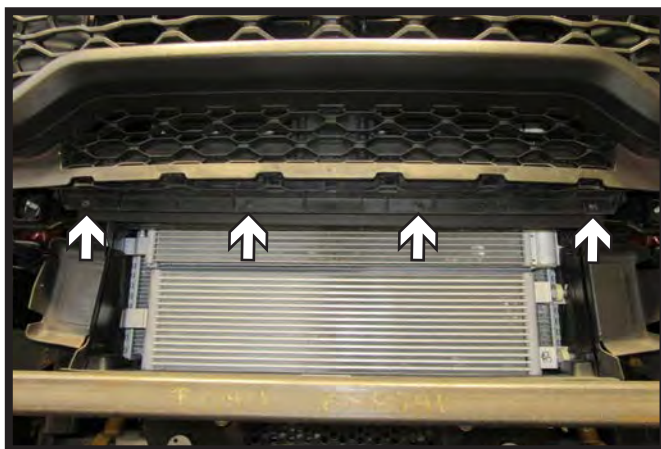
2. **Trucks with Tow Hooks:** Remove rubber grommet (white) and metal piece (gray) from back tow hook bolt. Reinstall the tow hook bolt and hardware. Do this on both sides of the vehicle. **Note:** If unable to remove tow hook bolt, may need to use a rubber mallet and hit downward on bolt to loosen.



BX2423  
2025-2026 Ram 1500 (Includes Rebel/RHO)  
(Includes Adaptive Cruise Control, Turbo & Shuttles)  
Installation Instructions



3. **RHO Models:** Using a reciprocating saw, cut along the weld at the bottom of the belly pan bracket. Remove piece from bracket. Do this on both brackets.

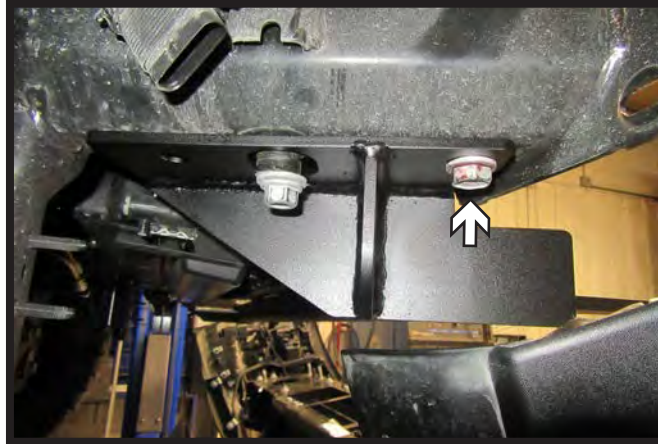


4. Remove the four (4) push pins from rubber piece below grille and remove. It will not be reinstalled.



5. Using a reciprocating saw, cut a straight line (white line) across the plastic piece to remove the indicated area.

BX2423  
2025-2026 Ram 1500 (Includes Rebel/RHO)  
(Includes Adaptive Cruise Control, Turbo & Shutters)  
Installation Instructions



6. Raise baseplate into place and start the 14MM bolt with flat washer and nylon lock nut, hand tighten. Do this on both sides of the vehicle.

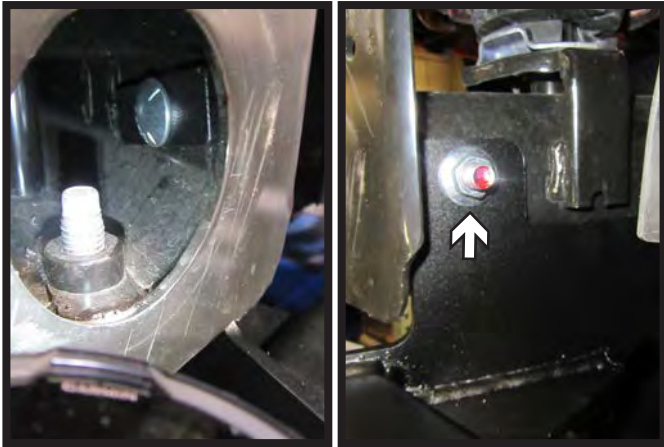
**Note:** For vehicles with tow hooks, use existing bolts.



7. Using a 1/2" drill bit, drill the bottom hole and side hole in the frame using the baseplate as a template. Do this on both sides of the vehicle.



BX2423  
2025-2026 Ram 1500 (Includes Rebel/RHO)  
(Includes Adaptive Cruise Control, Turbo & Shuttters)  
Installation Instructions



8. Place spacer plate onto 1/2" carriage bolt. Insert bolt and plate through access hole in the front of the vehicle frame. Install bolt and plate into side hole in baseplate and attach 1/2" flange whiz nut. Hand tighten. Do this on both sides of the vehicle.



9. Install the 1/2" x 1-1/2" bolt with lock washer and whiz nut into the bottom back hole. Fully tighten all bolts at this time starting with the side bolt, then back bottom bolt, and finally the front bottom bolt. Do this on both sides of the vehicle.

**\*\* Use Loctite® Red on all bolt threads and tighten all bolts to the appropriate torque. \*\***



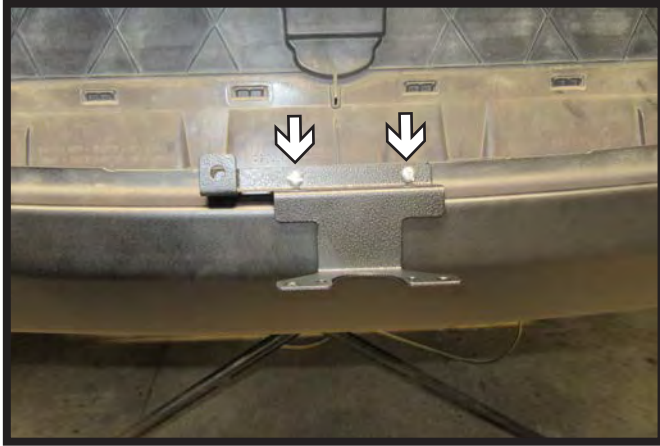
10. Attach the permanent baseplate safety cables to the provided convenience link on the baseplate. The photo above shows the recommended installation of the cables to frame of vehicle. Additional options may interfere with suggested mounting; in this case, secure the cables to a solid piece of the frame as described in the General Information sheet. Be sure the safety cables do not rub against any hoses or moving parts. Do this on **BOTH** sides of the vehicle.



11. **Rebel/RHO Models:** Hold electrical bracket on top of the bumper/fascia and mark holes. Using a 7/32" drill bit, drill two (2) holes.  
**Note:** Recommend spraying holes with an anti-rust spray to prevent future rust.



BX2423  
2025-2026 Ram 1500 (Includes Rebel/RHO)  
(Includes Adaptive Cruise Control, Turbo & Shutters)  
Installation Instructions



12. **Rebel/RHO Models:** Install electrical bracket to the top of the bumper/fascia using the provided hardware.



13. **Rebel/RHO Models (Optional):** Attach breakaway switch to the electrical bracket using the provided hardware.

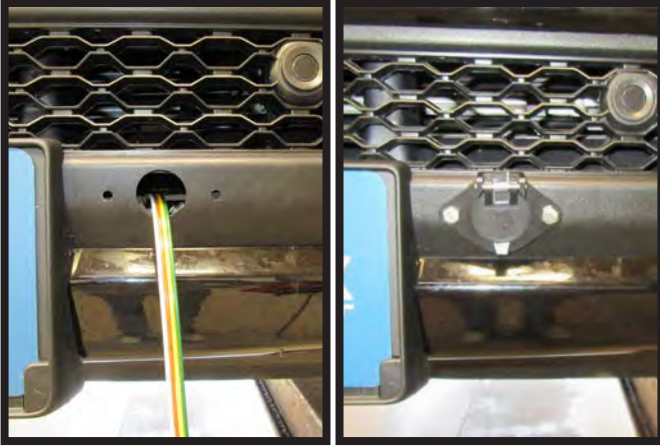


14. **Non-Rebel/RHO Models:** Reinstall the automatic valence and bumper.



- 14b. **Rebel/RHO Models:** Reinstall bumper/fascia. Secure wire loom to the on the back of the fascia to the baseplate using the provided zip ties.

BX2423  
2025-2026 Ram 1500 (Includes Rebel/RHO)  
(Includes Adaptive Cruise Control, Turbo & Shutters)  
Installation Instructions



15. **Non-Rebel/RHO Models:** Using a 1-1/2" hole saw drill a hole in the bumper on the driver side for the electrical plug as shown. Hold plug in place, using a 1/4" drill bit, drill the two (2) holes in the bumper for the bolts using the plug as a template. Install plug using provided hardware.
- NOTE:** When drilling the holes ensure that the two (2) holes for the bolts are above the ridge in the bumper.



16. **Non-Rebel/RHO Models (Optional):** Attach breakaway switch to the hole in the convenience link using the provided hardware.



- 17a. Reinstall wheel well pieces and reconnect all electrical connections.



- 17b. Reconnect all electrical connections.

BX2423  
2025-2026 Ram 1500 (Includes Rebel/RHO)  
(Includes Adaptive Cruise Control, Turbo & Shuttters)  
Installation Instructions

## **CUSTOMER SERVICE COMMITMENT**

Blue Ox® is committed to providing you with exceptional customer care throughout your lifetime with our products. Our team is here to assist you with any questions you may have regarding the performance of your product. Simply call (402) 385-3051 and you can speak with our customer service team.

Additionally, please visit our website to see which rallies our team will be attending. For a nominal fee, our service technician will service your towing system to ensure it's in proper working condition. Also, as a commitment to our customers, should you visit our factory, you can stay at our full service Blue Ox® campground at no charge along with enjoying a factory tour.

Again, thank you for being our customer and for the confidence you have shown in the performance of our products. It is because of customers like you we enjoy the success we have today.



© 2024 Blue Ox  
One Mill Road, Industrial Park  
Pender, Nebraska 68047  
Phone: (402) 385-3051  
Fax: (402) 385-3360  
[www.blueox.com](http://www.blueox.com)



## General Information

1. Ensure that your product(s) are registered online at [www.blueox.com](http://www.blueox.com). It is crucial to register your product(s) so that you may be alerted of product offerings, updates, upgrades, maintenance and safety bulletins, and/or recalls.
2. **It is the owner's responsibility to inspect all towing equipment for cracked welds, missing or worn parts and loose bolts before each towing trip.** Be sure to use Loctite® Red on all bolts and tighten to the recommended specifications.
3. **It is the owner's responsibility to hook up all towing equipment per manufacturer's instructions/ recommendations.**
4. Remove the attachment tabs when not in use (if applicable).

## Notice To Baseplate Installer

### 1. It is YOUR responsibility to watch for:

- Oil cooler and air conditioner lines
- Electrical wires and hoses
- Missing parts or attaching points on the frame

**\*\* If the baseplate is improperly installed and is against a wire or hose, it could cause fluid leaks or electrical shorts some time after the actual baseplate installation.**

## Permanent Baseplate Safety Cable Installation

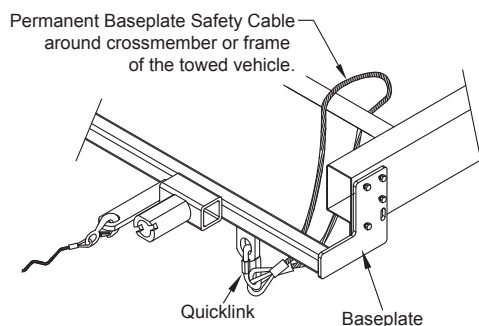
Permanent baseplate safety cables are strongly recommended when towing a vehicle with a tow bar. The principle function of the permanent baseplate safety cables is to prevent the towed vehicle from breaking loose in the event the connection between the frame of the towed vehicle and the baseplate fails or becomes disconnected. The cables must be connected from the baseplate to the frame rail or cross member of the vehicle's frame. The illustrations below show the possible arrangements recommended by Blue Ox®. Each permanent baseplate safety cable must have an adequate weight rating for the towing system. The weight rating of the two (2) cables together will not qualify.

***Do not mount the permanent baseplate safety cables against wires, hoses or brake lines.***

These permanent baseplate safety cables should remain installed as long as the baseplate is installed on the vehicle. Permanent baseplate safety cables are to be used in conjunction with, and NOT a replacement for legally required safety cables attaching the towed vehicle to the towing vehicle.

### Option #1

(Baseplates with Convenience Link Tabs)



### Option #2

(Baseplates with out Convenience Link Tabs)



# BLUE OX ORIGINAL PURCHASERS THREE YEAR LIMITED WARRANTY

Automatic Equipment Manufacturing Company ("Automatic") warrants to the original (first) retail purchaser that this product, manufactured by Automatic, shall be free from defect in material and workmanship under normal use and service for a period of three years from the date of delivery.

During said three-year period, Automatic will repair or replace any parts that have been returned by the original purchaser, to the factory, transportation prepaid, and in Automatic's sole and absolute opinion found to be defective.

## Limitations on Warranty Coverage:

Coverage under this warranty will be valid only if the customer warranty card is returned by the original purchaser within 30 days of purchase.

Coverage under this warranty will be effective only when a copy of the original invoice, showing date and place of purchase, accompanies any claim for warranty. This warranty is NON TRANSFERABLE.

This limited warranty will not cover, in any way or form, any alleged damages caused by incorrect or improper installation, improper use, modification or neglect of product, failure to properly service and maintain, misuse, act of God, accident or failure of the user to follow guidelines contained in the instructional material provided by Automatic.

This warranty does not cover normal wear and tear, paint or rust.

Warrantor assumes no responsibility to the owner for loss of use of product, loss of time, inconvenience or any other damage consequential or otherwise. Including, but not limited to mileage, expense of transporting of product, return shipping expense, mechanics travel time, telephone, road service, towing, and rental during repairs, travel, lodging, loss or damage to personal property or loss of earnings.

**REPAIR OR REPLACEMENT AS SET FORTH IN THIS LIMITED WARRANTY IS THE SOLE EXCLUSIVE REMEDY OF THE PURCHASER. AUTOMATIC SHALL NOT BE LIABLE FOR ANY INCIDENTAL OR CONSEQUENTIAL DAMAGES FOR BREACH OF ANY EXPRESS OR IMPLIED WARRANTY ON THIS PRODUCT. EXCEPT TO THE EXTENT PROHIBITED BY APPLICABLE LAW, ANY IMPLIED WARRANTY OF MERCHANTABILITY OR FITNESS FOR A PARTICULAR PURPOSE ON THIS PRODUCT IS LIMITED IN LENGTH TO THE DURATION OF THIS WARRANTY.**

Please visit <http://blueox.com/warranty/> to register your warranty



**BLUE OX**