



BX2915

2025 Ford Ranger (Includes ACC, Shuttters, & EcoBoost) 2025 Ford Ranger Raptor (Includes ACC, Shuttters, & Turbo) Installation Instructions

If the listed fit information for this baseplate does not include the year/make/model/features of your vehicle, please contact us at (402) 385-3051 to verify.

Please read BOTH these Installation Instructions and the General Information sheet prior to installing or operating this equipment.

1. Blue Ox® towing products and accessories are intended to be installed by Blue Ox® Dealers who are familiar with our products and have the equipment and knowledge necessary to do “fit work”. If needed, Blue Ox® Dealers can be found at www.blueox.com or by contacting our Customer Care Department at (402) 385-3051.
2. Many Blue Ox® baseplates are designed to use existing holes and hardware to mount the baseplate to the towed vehicle. Even though bolts are there, do not assume they are adequate for baseplate mounting. Always use the hardware supplied in the hardware kit and existing hardware as specified in the installation instructions.



If the front of your vehicle looks different than this, please contact us at (402) 385-3051.

Serial Number

Attachment Tab Height: 18-3/4”

Attachment Tab Width: 31-1/8”

Please ensure tow bar being used is compatible with the baseplate tab width.

Bolt Torque Specifications

Torque in Foot-Pounds for Inch Bolts

Bolt Size	Grade 5	Grade 8
1/4"	10	14
5/16"	19	29
3/8"	33	47
7/16"	54	78
1/2"	78	119
5/8"	154	230
3/4"	257	380

Bolt Torque Specifications

Torque in Foot-Pounds for Metric Bolts

Bolt Size	Grade 8.8	Grade 10.9
6MM	6	8
8MM	16	22
10MM	31	40
12MM	54	70
14MM	89	117
16MM	161	230
18MM	222	318



WARNING

Failure to read and follow these instructions could result in separation of the towed vehicle from the tow bar, causing property damage, loss of towed vehicle, personal injury or death.

BX2915

2025 Ford Ranger (Includes Adaptive Cruise Control, Shuttters, & EcoBoost) 2025 Ford Ranger Raptor (Includes Adaptive Cruise Control, Shuttters, & Turbo) Installation Instructions

Reference your vehicle owner's manual for manufacturer's towing specifications.

Instruction Notes: The skid plate, fascia and bumper are removed and reinstalled for the baseplate installation. Some drilling and trimming is required.

Place all components that are removed on a flat, sturdy surface. All items will be reinstalled unless otherwise noted after the baseplate is installed.

The dimensional variations between otherwise identical vehicles can be considerable. While the baseplate was designed for easy installation, it may be necessary to tailor the baseplate slightly to compensate for vehicle manufacturer's tolerances.

The BX88267 Tail Light Wiring Kit is recommended for Non-Raptor Models.

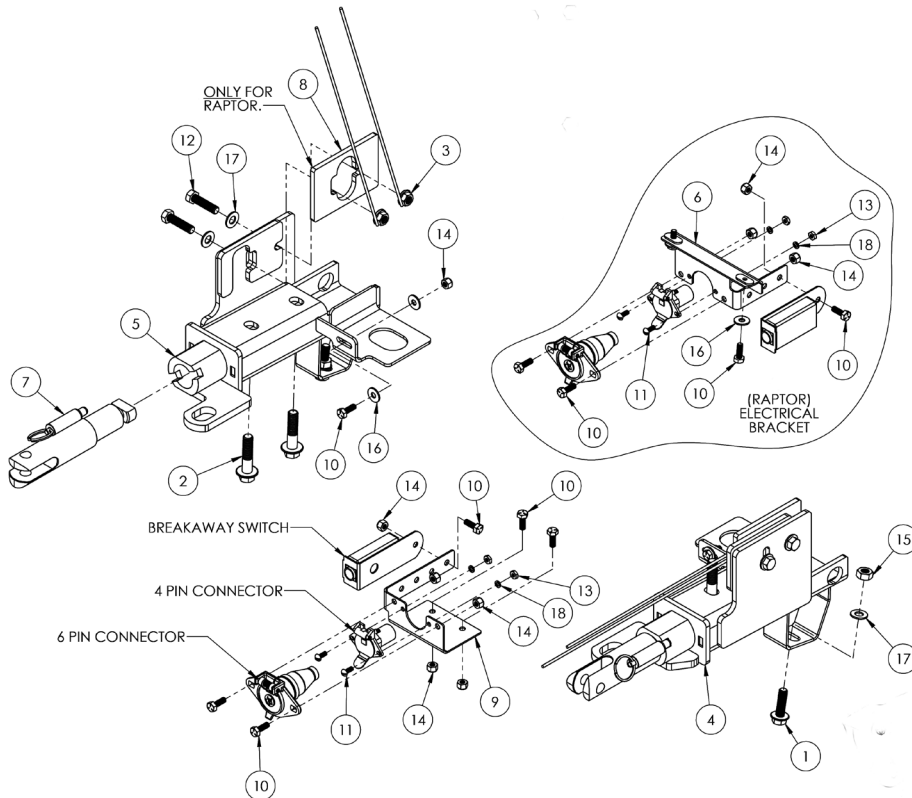
The BX8848 Tail Light Wiring Kit is recommended for Raptor Models.

NOTICE

- Handling of some cosmetic parts when installing this product may require the use of protective covers, rags, specialty tools, etc. to prevent damage.
- When using power drills be aware of the dangers of torque and drill bit length.
- When using a reciprocating saw be aware of objects behind the cutting surface.
- Use a good quality paint to spray cut edges of frame to prevent rusting.
- Be sure that **ALL** electrical connections are plugged in and accessories are functioning properly before reinstalling the fascia.
- The baseplate is computer tested to your vehicle's GVWR, exceeding this weight will void the manufacturer's warranty.
- Be sure to use a sufficient amount of Loctite® Red on all bolt threads before tightening. Tighten all bolts according to the torque chart provided unless specified.
- Dealer or installer be certain the user receives these instruction sheets.
- If the baseplate is in an accident, it must be replaced. **DO NOT** use it again! An accident can cause unseen damage and using it again could result in more damage or serious injury. **DO NOT** use the baseplate if it is damaged or missing parts.

BX2915

2025 Ford Ranger (Includes Adaptive Cruise Control, Shuttters, & EcoBoost) 2025 Ford Ranger Raptor (Includes Adaptive Cruise Control, Shuttters, & Turbo) Installation Instructions



Tools Required

Large Vise Grip
 Flat Screwdriver
 Phillips Screwdriver
 Torque Wrench
 (2) 10" Socket Extension
 Utility Knife
 Reciprocating Saw
 Drill
 Loctite® RED
 1/4" Drill Bit
 3/8" Drill Bit
 5/8" Drill Bit
 T25 Torx
 T30 Torx
 T40 Torx
 8MM Socket
 10MM Socket
 11MM Socket
 11MM Wrench
 13MM Socket
 15MM Socket
 17MM Wrench
 9/16" Socket
 9/16" Wrench
 11/16" Wrench

Item No.	Part No.	Description	Qty.
1.....	Existing.....	M10-1.5MM x 35MM Long	2
2.....	Existing.....	M12 x 1.75MM x 50MM Long	4
3.....	61-4978	3/8"-16 Whiz Nut with 14" Wire	4
4.....	61-8766	BX2915 Baseplate, DS.....	1
5.....	61-8767	BX2915 Baseplate, PS.....	1
6.....	61-8769 (Raptor only)	Electrical Bracket with Breakaway Mount	1
7.....	62-3468	Attachment Tab Assembly with Hole	2
8.....	101-11273 (Raptor only)	Frame Spacer Plate	2
9.....	101-11277	Electrical Bracket with Breakaway Mount	1
10.....	201-0050	1/4"-20 x 3/4" Hex Head Bolt, Grade 5, ZP	7
11.....	201-0192	#10-32 1/2" Round Slotted Head Screw.....	2
12.....	201-0440	3/8"-16 x 1-1/2" Hex Head Bolt, Grade 5, ZP	4
13.....	202-0047	#10-32 Hex Nut	2
14.....	202-0102	1/4"-20 Hex Nylon Nut, ZP	7
15.....	202-0111.....	10MM -1.5 Hex Nut, ZP	2
16.....	203-0001	1/4" Flat Washer, ZP.....	6
17.....	203-0003	3/8" Flat Washer, ZP.....	6
18.....	203-0054	#10 Lock Washer.....	2
19.....	226-0049(not shown)	Class IV Safety Cables.....	2
20.....	229-0512(not shown)	1/2" Quicklink, ZP	2
21.....	290-0437(not shown)	Black Cap Plug Receiver.....	2

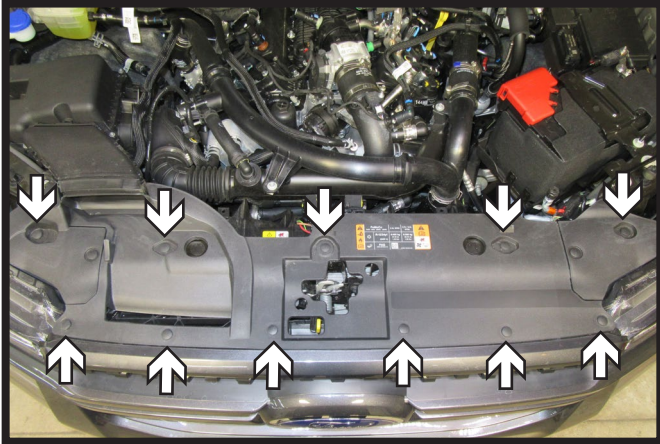
Important:

Use only genuine factory replacement parts on your baseplate. Do **NOT** substitute homemade or non-typical parts. If a bolt is lost or in need of replacement, for your safety and the preservation of your baseplate, be sure to use a replacement bolt of the same grade (In most cases it will be Grade 5, please reference the parts list above). Replacement parts may be ordered through your nearest Blue Ox® Dealer or Distributor. Failing to follow and/or altering these installation instructions in either installation or required equipment will void the manufacturer's warranty. Towing behind a non-motorized vehicle will void the warranty.

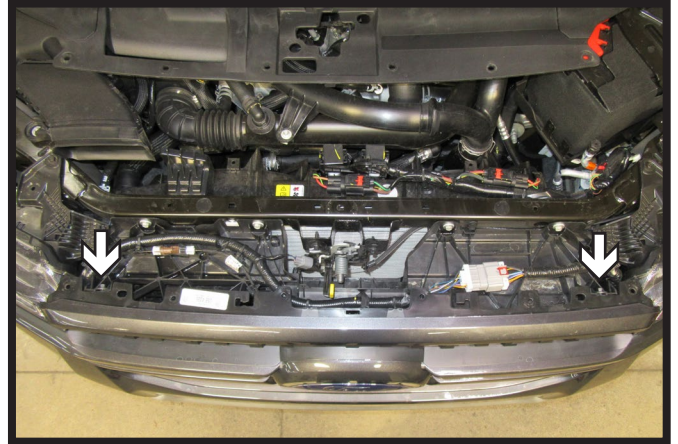
2025 Ford Ranger (Includes Adaptive Cruise Control, Shuttters, & EcoBoost)
 2025 Ford Ranger Raptor (Includes Adaptive Cruise Control, Shuttters, & Turbo)
 Installation Instructions

Non-Raptor Models Fascia Removal & Baseplate Installation:

For Raptor Models continue to page 13



1. Remove the eleven (11) push pins from the top of the fascia. Remove fascia cover and set aside to be reinstalled later.



2. Using an 8MM socket, remove the two (2) bolts, one (1) on each side, from the bottom of the fascia.



3. Remove the six (6) push pins from the wheel well. Do this on both sides of the vehicle.



4. Using a T25 Torx, remove the one (1) bolt from the bottom of the wheel well trim. Do this on both sides of the vehicle.

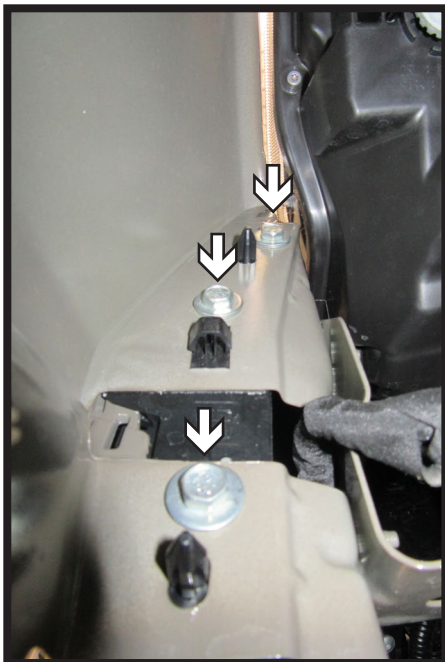
2025 Ford Ranger (Includes Adaptive Cruise Control, Shuttters, & EcoBoost)
 2025 Ford Ranger Raptor (Includes Adaptive Cruise Control, Shuttters, & Turbo)
 Installation Instructions



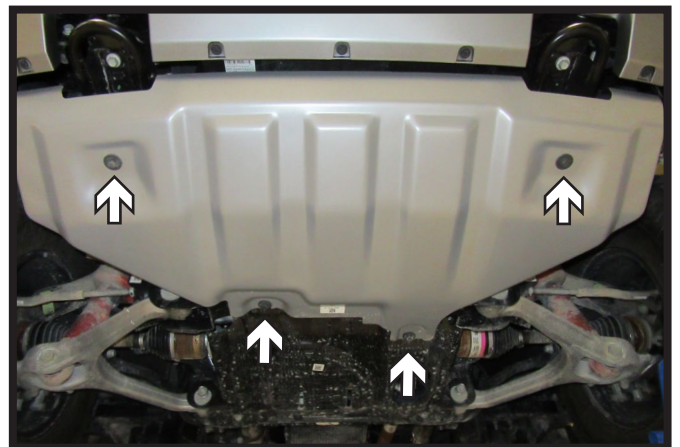
5. Using a Phillips screwdriver, remove the two (2) push pins from the top of the wheel well edge. Do this on both sides of the vehicle.



6. Pull back the wheel well trim, releasing the two (2) push pins, past the fascia joint. Disconnect the electrical connection. Prop trim away from the vehicle using a soft cloth. Do this on both sides of the vehicle.



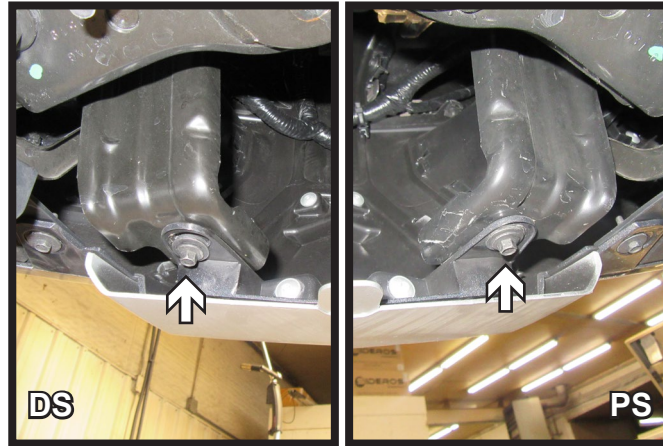
7. Pull back the wheel well liner. Using a 10MM socket, remove the three (3) bolts from the fascia joint. Do this on both sides of the vehicle.



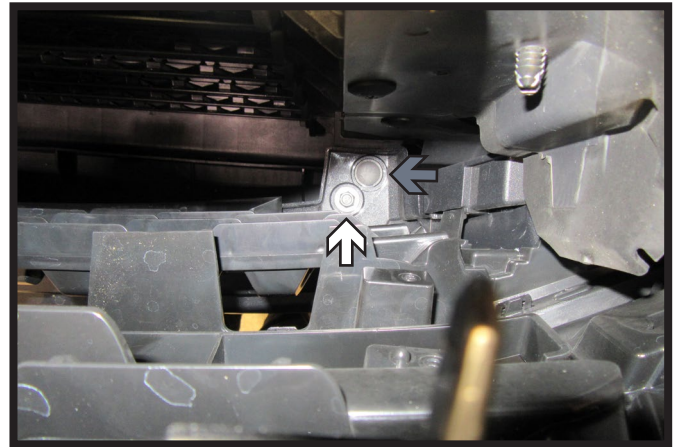
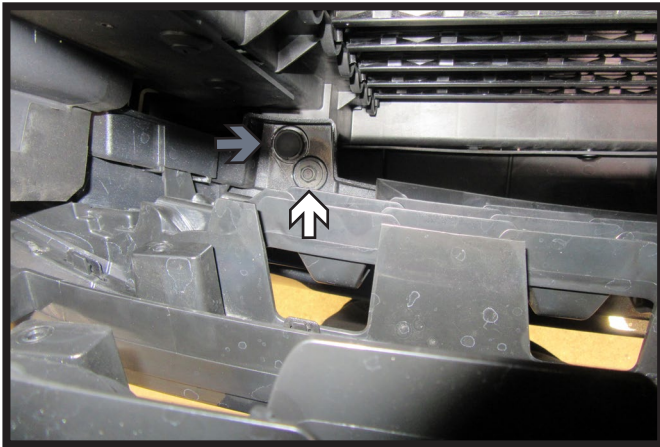
8. Using a 15MM socket, remove the four (4) bolts from the skid plate. Remove skid plate and set aside to be reinstalled later.

BX2915

2025 Ford Ranger (Includes Adaptive Cruise Control, Shuttters, & EcoBoost) 2025 Ford Ranger Raptor (Includes Adaptive Cruise Control, Shuttters, & Turbo) Installation Instructions



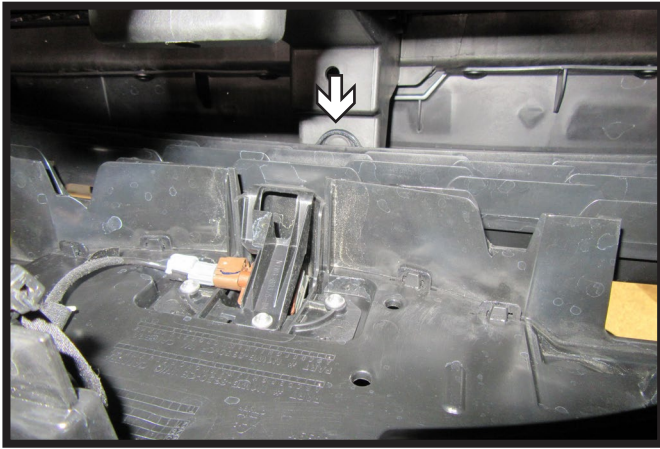
9. Using an 8MM socket, remove the two (2) bolts, one (1) on each side, from the bottom of the vehicle.



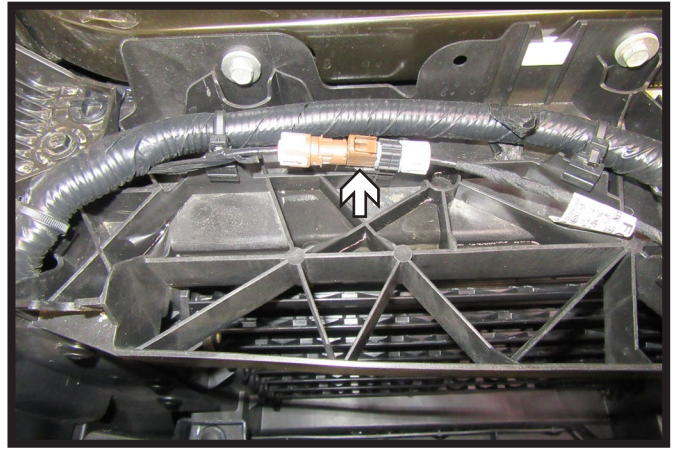
10. Using a 10MM socket and two (2) 10" socket extensions, remove the two (2) bolts (white) from behind the grill. There is one (1) on each side. Remove the two (2) push pins (gray), one (1) on each side, from behind the grille.

BX2915

2025 Ford Ranger (Includes Adaptive Cruise Control, Shuttters, & EcoBoost) 2025 Ford Ranger Raptor (Includes Adaptive Cruise Control, Shuttters, & Turbo) Installation Instructions



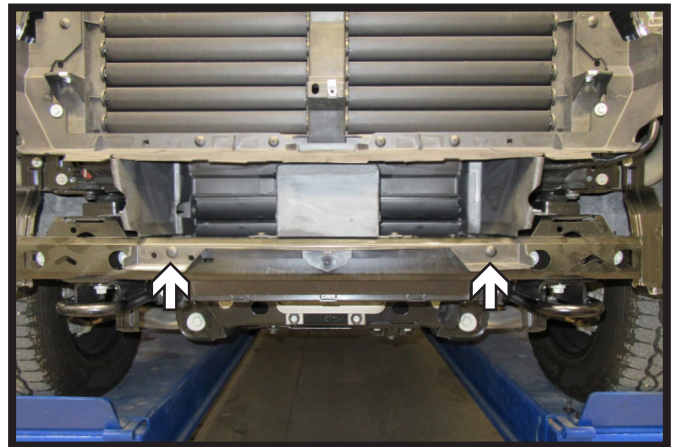
11. Remove the one (1) push pin from the center of the vehicle behind the grille.



12. Unplug the electrical on the top of the vehicle and unclip the wire loom from the vehicle.



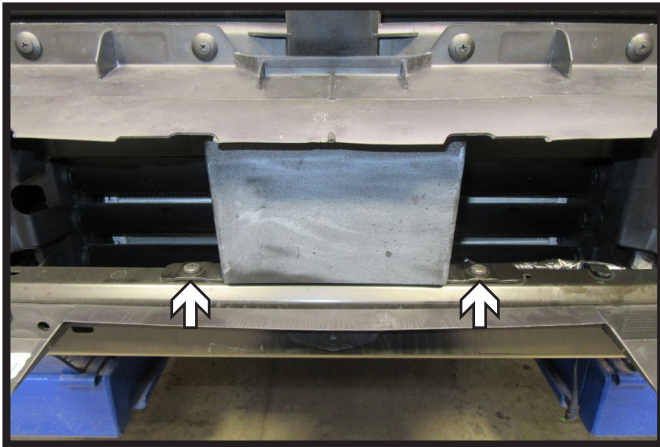
13. Unplug the electrical connection on the driver side of the vehicle (inset) and unclip wire loom from the vehicle. Remove fascia and set aside to be reinstalled later.



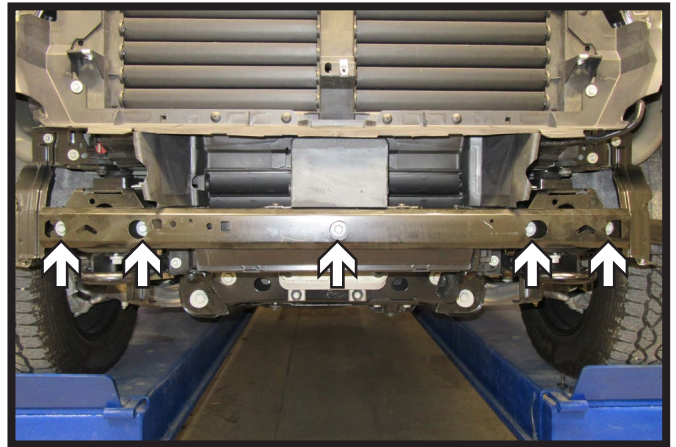
14. Using a Phillips screwdriver, remove the two (2) push pins from the plastic piece below the Adaptive Cruise Control (ACC).

BX2915

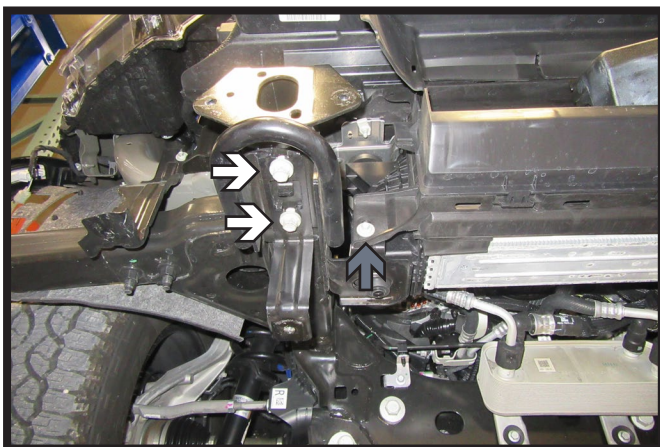
2025 Ford Ranger (Includes Adaptive Cruise Control, Shuttters, & EcoBoost) 2025 Ford Ranger Raptor (Includes Adaptive Cruise Control, Shuttters, & Turbo) Installation Instructions



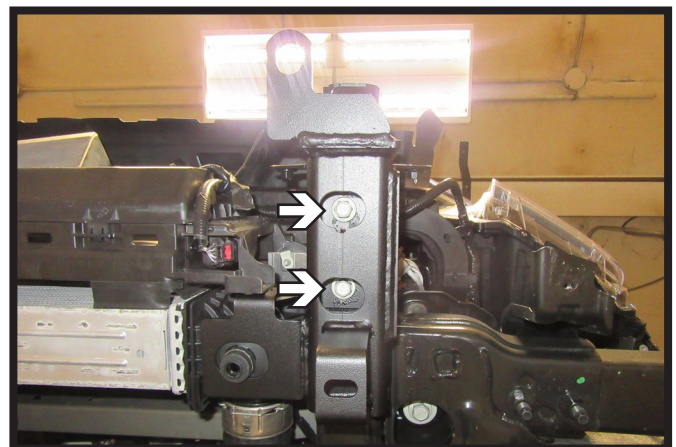
15. Using a T30 Torx, remove the two (2) bolts from the ACC bracket. Remove plastic piece and set aside to be reinstalled later.



16. Using a 13MM socket, remove the five (5) bolts from the tube below the ACC sensor. Then remove the one (1) push pin attaching the wire loom to top of tube. Remove tube and set aside to be reinstalled later. Set sensor and wire loom out of the way for baseplate installation.
DO NOT unplug the ACC sensor.



17. Using a 15MM socket, remove the two (2) bolts (white) from the bottom of the two hook. Then using an 8MM socket, remove the one (1) bolt (gray) next to the tow hook. Remove tow hook, it will not be reinstalled. Do this on both sides of the vehicle.

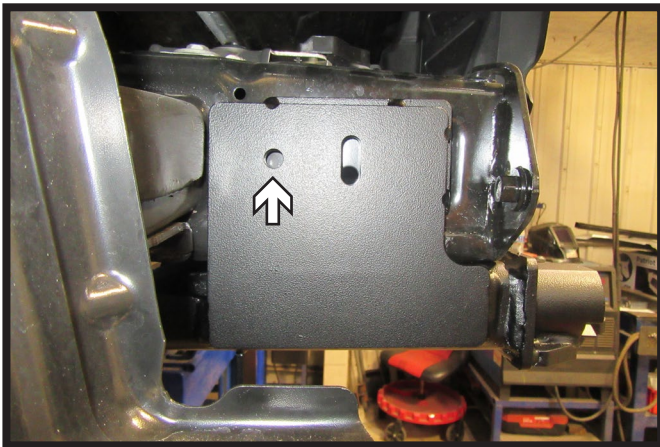


18. Slide baseplate onto vehicle. Reinstall the bottom two (2) existing bolts. As the bolts are tightened, push side plates towards the vehicle frame so the baseplate is flush against the frame. Do this on both sides of the vehicle.

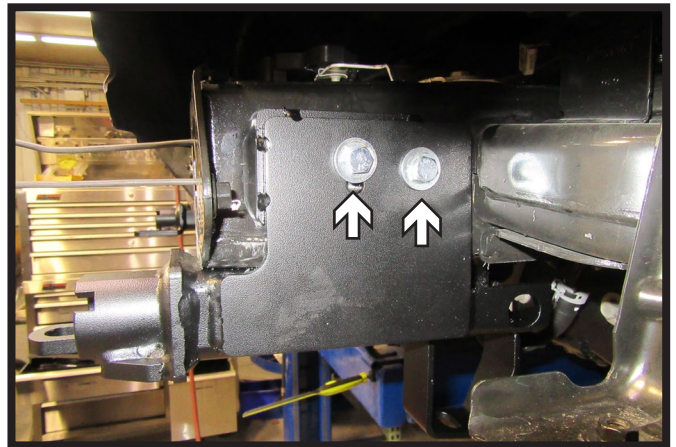
**** Use Loctite® Red on all bolt threads and tighten all bolts to the appropriate torque.**

BX2915

2025 Ford Ranger (Includes Adaptive Cruise Control, Shuttters, & EcoBoost) 2025 Ford Ranger Raptor (Includes Adaptive Cruise Control, Shuttters, & Turbo) Installation Instructions

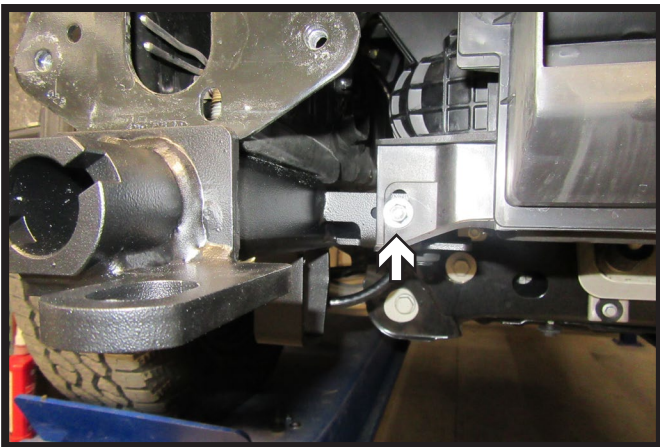


19. Using a 3/8" drill bit, drill out the rear hole on the side of the frame using the baseplate as a template. May need to ream out the front hole. Do this on both sides of the vehicle.



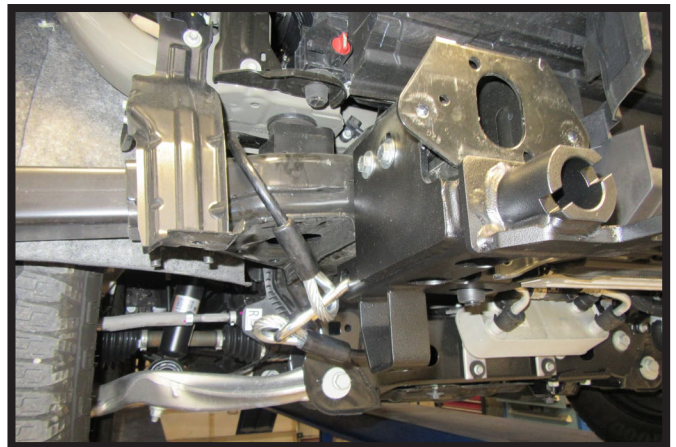
20. Install 3/8" bolts with flat washers and whiz nuts. Do this on both sides of the vehicle.

**** Use Loctite® Red on all bolt threads and tighten all bolts to the appropriate torque.**



21. Starting from the rear of the vehicle, install the 1/4" bolt with flat washer and nut into hole attaching the bottom shutters to the baseplate. Do this on both sides of the vehicle.

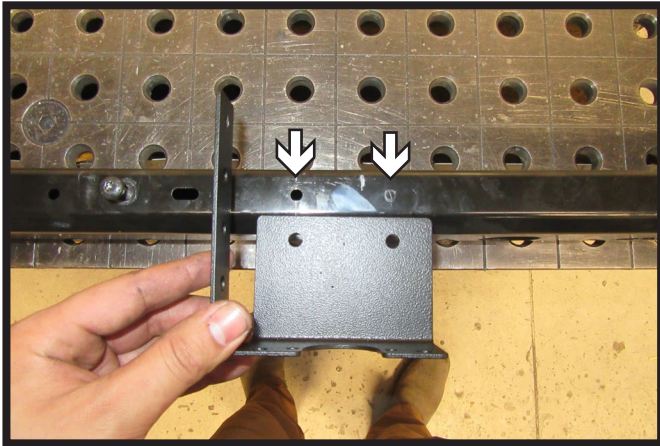
**** Use Loctite® Red on all bolt threads and tighten all bolts to the appropriate torque.**



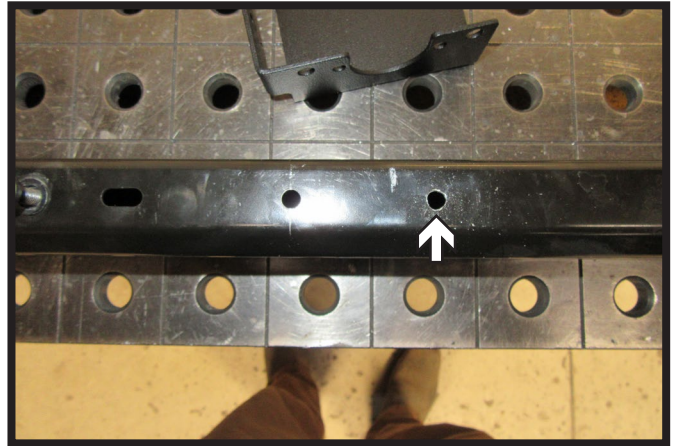
22. Attach the permanent baseplate safety cables to the provided convenience link on the baseplate. The photo above shows the recommended installation of the cables to frame of vehicle. Additional options may interfere with suggested mounting; in this case, secure the cables to a solid piece of the frame as described in the General Information sheet. Be sure the safety cables do not rub against any hoses or moving parts. Do this on **BOTH** sides of the vehicle.
Note: Wrap around frame and towards the inside to avoid tires.

BX2915

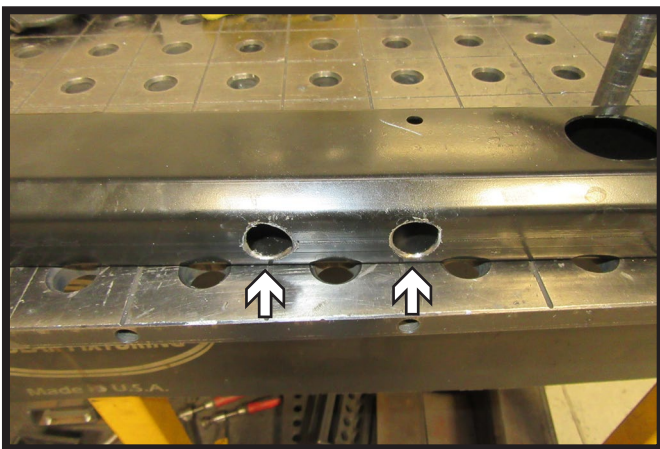
2025 Ford Ranger (Includes Adaptive Cruise Control, Shuttters, & EcoBoost) 2025 Ford Ranger Raptor (Includes Adaptive Cruise Control, Shuttters, & Turbo) Installation Instructions



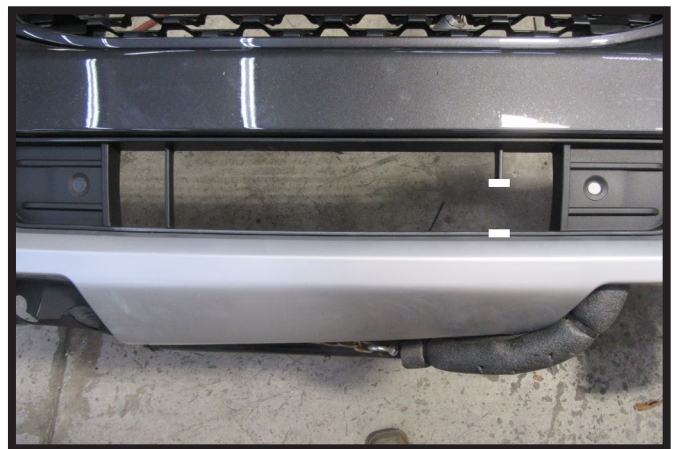
23. Line up the electrical bracket with the existing hole to the right of the ACC bracket holes. Mark second hole using the bracket as a template.



24. Using a 1/4" drill bit, drill out second hole.



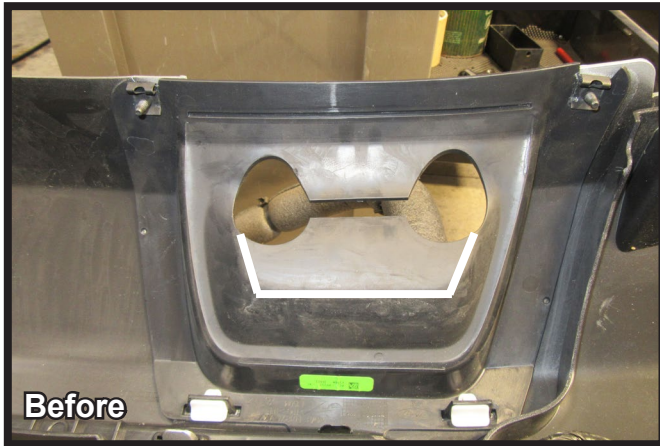
25. On the bottom of the tube, using a 5/8" drill bit, drill out two (2) holes lining up with the 1/4" holes on the top of the tube. Install electrical bracket to the top of the tube using provided hardware.



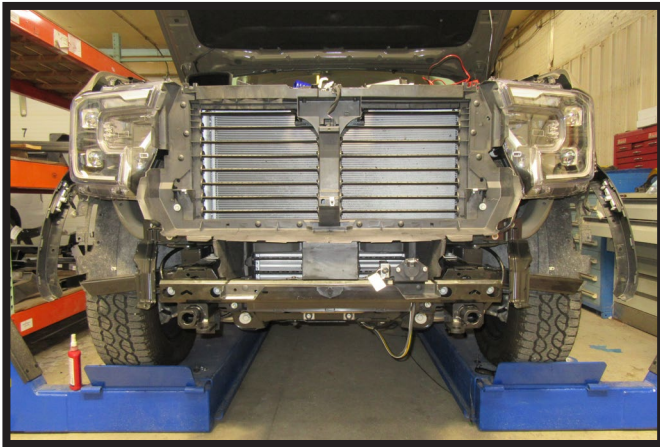
26. Using a reciprocating saw, trim the vertical slat on the driver side of the vehicle as shown to allow clearance for the electrical bracket.

BX2915

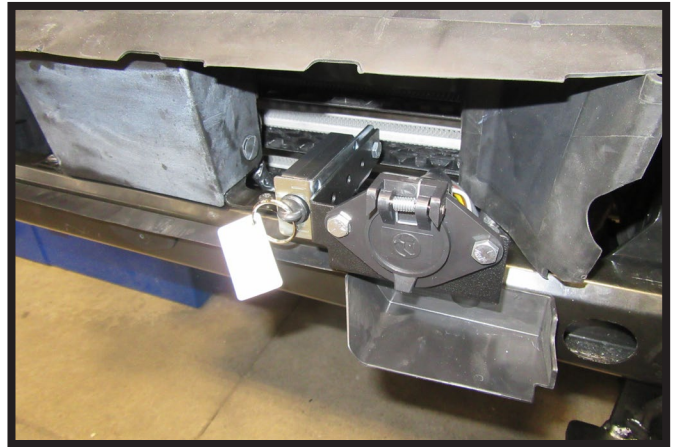
2025 Ford Ranger (Includes Adaptive Cruise Control, Shuttters, & EcoBoost)
2025 Ford Ranger Raptor (Includes Adaptive Cruise Control, Shuttters, & Turbo)
Installation Instructions



27. Using a utility knife, trim the tow hook opening as shown to allow clearance for the baseplate. Do this on both sides of the vehicle.



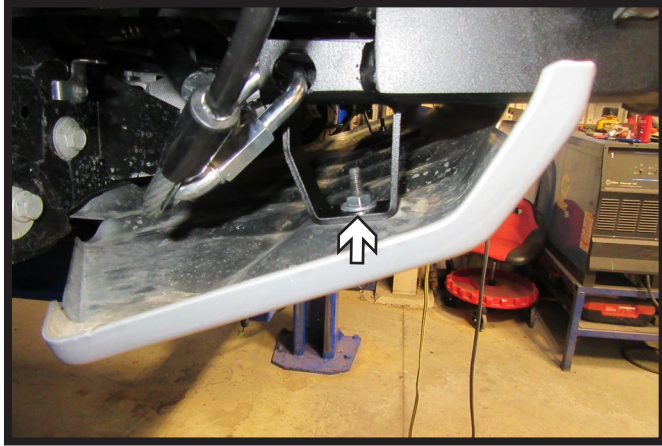
28. Reinstall tube and reattach ACC bracket to the tube. Reattach wire loom to the top of the tube.



29. **Optional:** Install breakaway switch onto the electrical bracket as shown using provided hardware.

BX2915

2025 Ford Ranger (Includes Adaptive Cruise Control, Shuttters, & EcoBoost)
2025 Ford Ranger Raptor (Includes Adaptive Cruise Control, Shuttters, & Turbo)
Installation Instructions



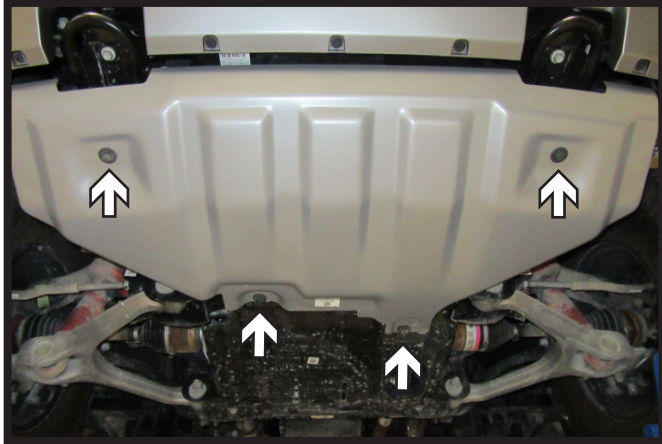
30. Reinstall skid plate using the two (2) existing bolts and provided flat washers and nuts.



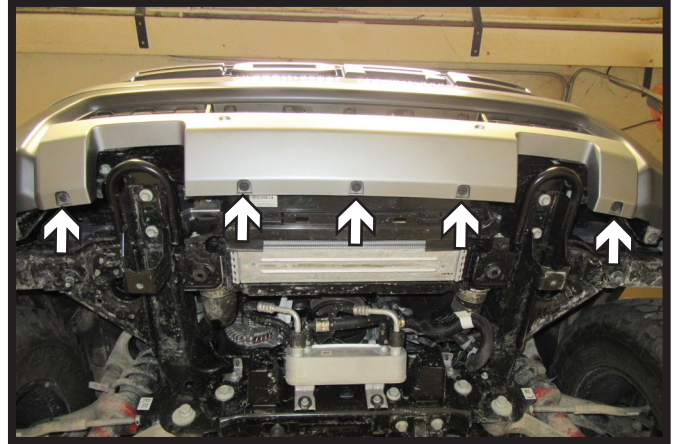
31. Reinstall fascia, fascia cover, and reconnect all electrical connections.

2025 Ford Ranger (Includes Adaptive Cruise Control, Shuttters, & EcoBoost)
 2025 Ford Ranger Raptor (Includes Adaptive Cruise Control, Shuttters, & Turbo)
 Installation Instructions

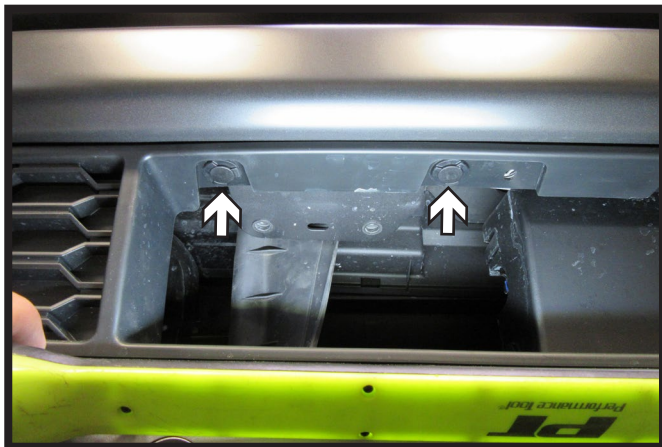
Raptor Models Fascia Removal and Baseplate Installation:



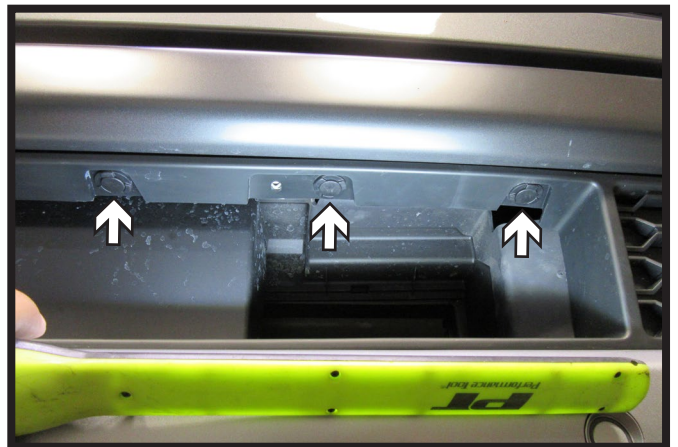
1. Using a 15MM socket, remove the four (4) bolts from the skid plate. Remove skid plate and set aside to be reinstalled later.



2. Using a 10MM socket, remove the five (5) bolts from the bottom of the fascia.



3. Remove the five (5) push pins from the top of the grille opening.

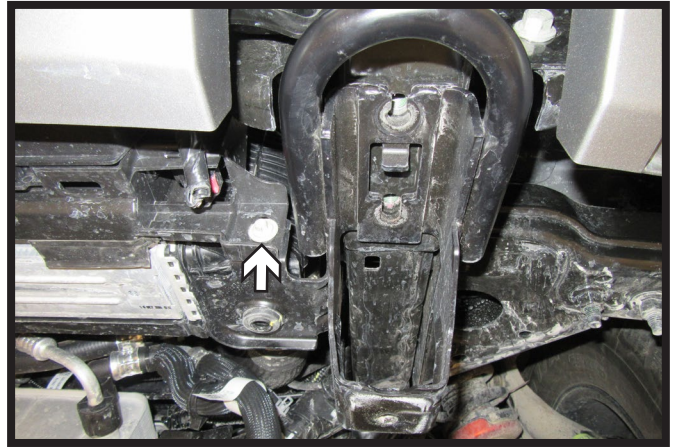


BX2915

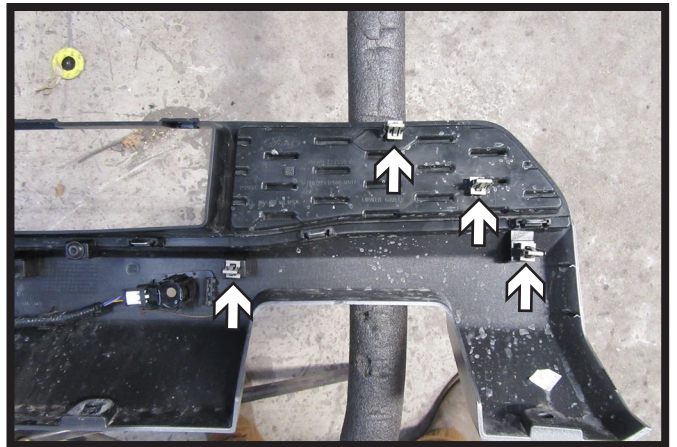
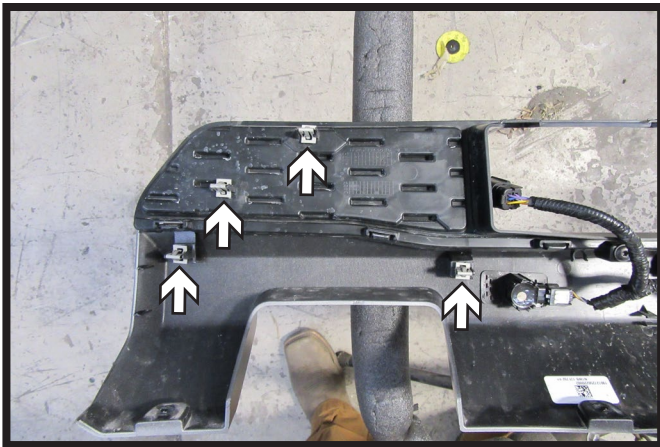
2025 Ford Ranger (Includes Adaptive Cruise Control, Shuttters, & EcoBoost) 2025 Ford Ranger Raptor (Includes Adaptive Cruise Control, Shuttlers, & Turbo) Installation Instructions



4. Using a 15MM socket, remove the two (2) bolts from the tow hook. Do this on both sides of the vehicle.

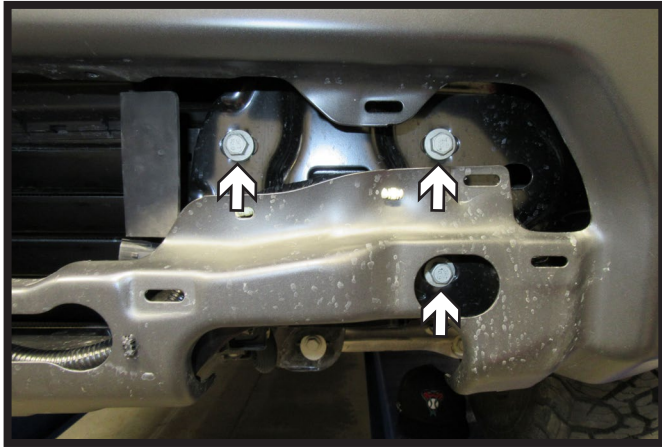


5. Using an 8MM socket, remove the one (1) bolt next to the tow hook. Remove tow hook, it will not be reinstalled. Do this on both sides of the vehicle.



6. Release the eight (8) clips, four (4) on each side from the back of the fascia. As the fascia is removed, disconnect the electrical connection on the driver side of the vehicle. Remove fascia and set aside to be reinstalled later.

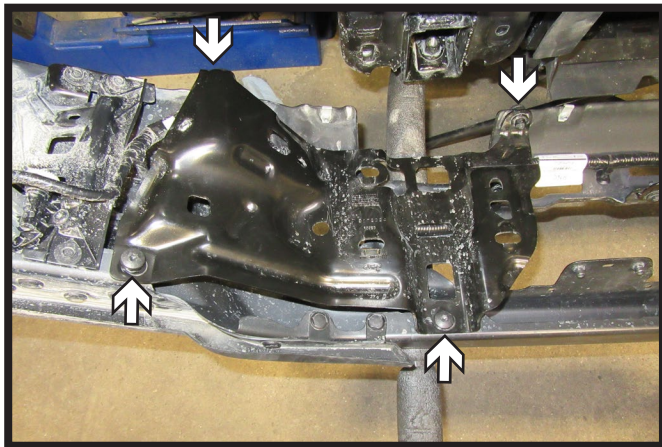
2025 Ford Ranger (Includes Adaptive Cruise Control, Shuttters, & EcoBoost)
 2025 Ford Ranger Raptor (Includes Adaptive Cruise Control, Shuttters, & Turbo)
 Installation Instructions



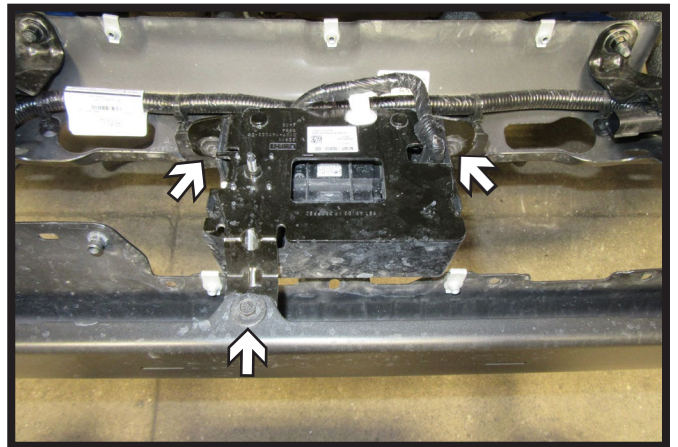
7. Using a 15MM socket, remove the three (3) bolts from the bumper bracket. Do this on both sides of the vehicle.



8. Remove the bumper, support and set in front of the vehicle. **Do not disconnect electrical.**



9. Unclip the wire loom from the metal shield on the backside of the bumper. Then using a T40 Torx, remove the four (4) bolts attaching the shield to the bumper. Remove shield and set aside to be reinstalled later. Do this on both sides of the vehicle.



10. Using a 10MM socket, remove the three (3) bolts from the Adaptive Cruise Control (ACC) bracket. **Do Not unplug the ACC sensor.**

BX2915

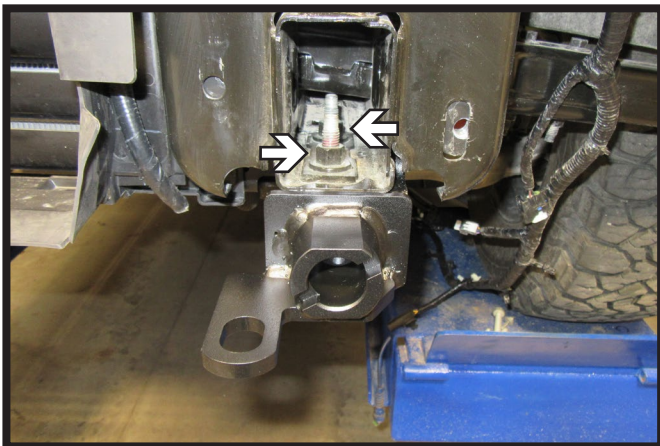
2025 Ford Ranger (Includes Adaptive Cruise Control, Shuttters, & EcoBoost) 2025 Ford Ranger Raptor (Includes Adaptive Cruise Control, Shuttters, & Turbo) Installation Instructions



11. Disconnect the two (2) electrical connections on each side of the bumper. Unclip the rest of the wire loom from the back of the bumper.

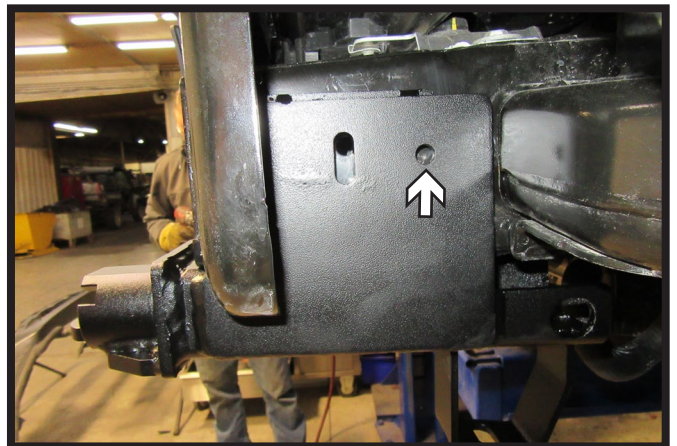


12. Remove bumper and set aside to be reinstalled later. Set ACC bracket and sensor on top of vehicle, out of the way for baseplate installation.
Note: Do Not unplug the ACC sensor.



13. Slide baseplate onto vehicle. Reinstall the bottom two (2) existing bolts. As the bolts are tightened, push side plates towards the vehicle frame so the baseplate is flush against the frame. Do this on both sides of the vehicle.

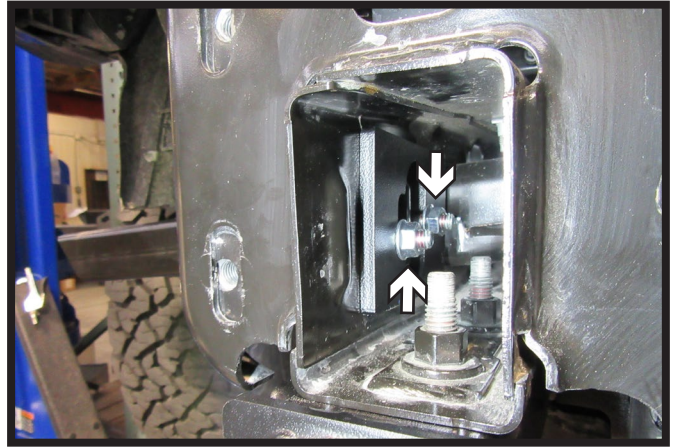
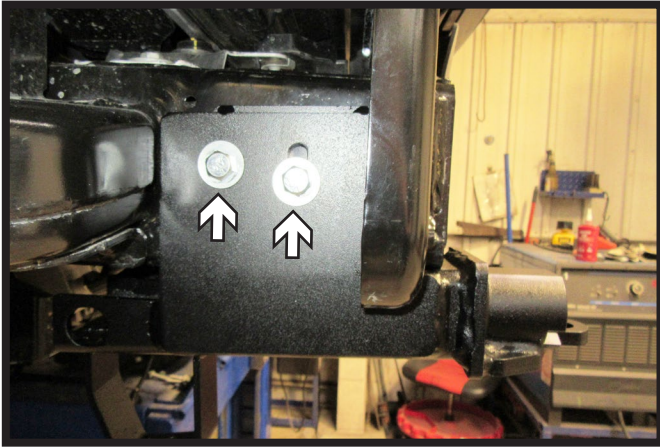
**** Use Loctite® Red on all bolt threads and tighten all bolts to the appropriate torque.**



14. Using a 3/8" drill bit, drill out the rear hole on the side of the frame using the baseplate as a template. May need to ream out the front hole. Do this on both sides of the vehicle.

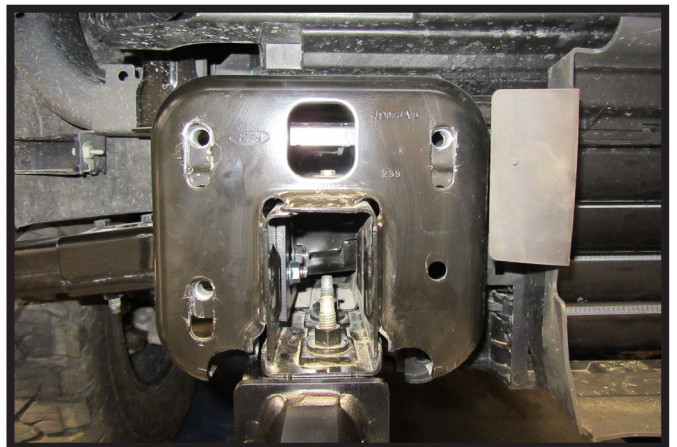
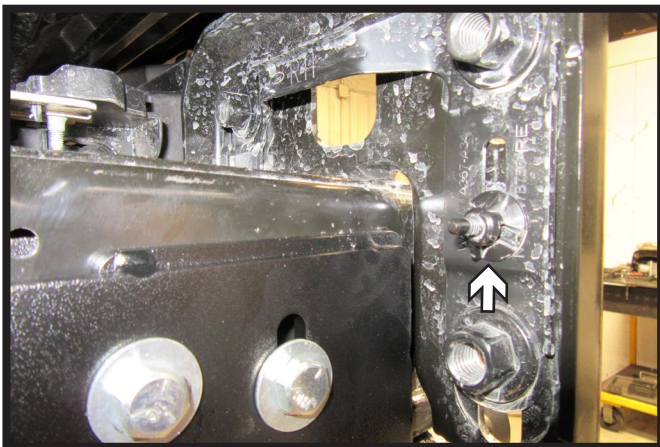
BX2915

2025 Ford Ranger (Includes Adaptive Cruise Control, Shuttters, & EcoBoost) 2025 Ford Ranger Raptor (Includes Adaptive Cruise Control, Shuttters, & Turbo) Installation Instructions



15. Install 3/8" bolts with flat washers into side baseplate holes (left). Install spacer plate with whiz nuts on the inside of the frame (right). Ensure the spacer plate is centered on the inside of the frame. Do this on both sides of the vehicle.

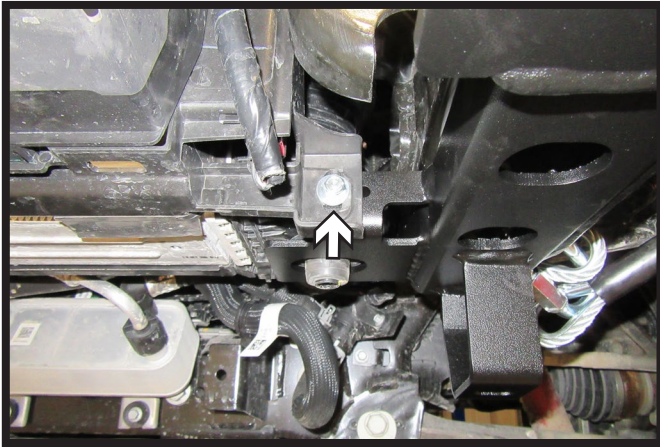
**** Use Loctite® Red on all bolt threads and tighten all bolts to the appropriate torque.**



16. Loosen the nut on the back side of the bumper bracket (left). Slide bracket upward so the holes are at the top of the slots on the bracket as shown (right). Retighten nut. Do this on both sides of the vehicle.

BX2915

2025 Ford Ranger (Includes Adaptive Cruise Control, Shutters, & EcoBoost) 2025 Ford Ranger Raptor (Includes Adaptive Cruise Control, Shutters, & Turbo) Installation Instructions

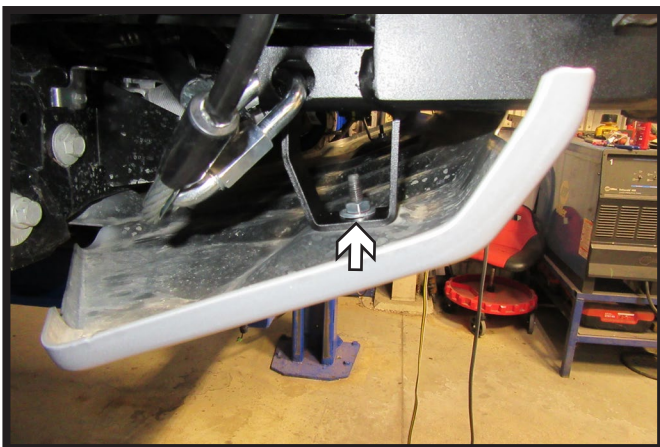


17. Starting from the rear of the vehicle, install the 1/4" bolt with flat washer and nut into hole attaching the bottom shutters to baseplate. Do this on both sides of the vehicle.

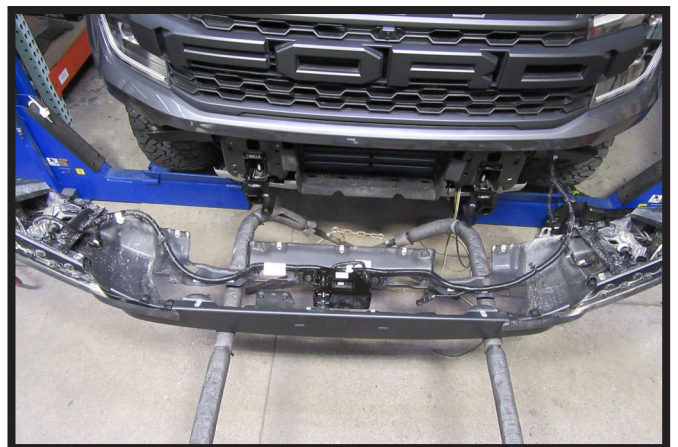


18. Attach the permanent baseplate safety cables to the provided convenience link on the baseplate. The photo above shows the recommended installation of the cables to frame of vehicle. Additional options may interfere with suggested mounting; in this case, secure the cables to a solid piece of the frame as described in the General Information sheet. Be sure the safety cables do not rub against any hoses or moving parts. Do this on **BOTH** sides of the vehicle.

Note: Wrap around frame and towards the inside to avoid tires.



19. Reinstall skid plate using the two (2) existing bolts and provided flat washers and nuts.



20. Support bumper in front of vehicle. Reinstall the ACC bracket. Reconnect the electrical connections on each side of the bumper and reinstall wire loom.

BX2915

2025 Ford Ranger (Includes Adaptive Cruise Control, Shuttters, & EcoBoost) 2025 Ford Ranger Raptor (Includes Adaptive Cruise Control, Shuttters, & Turbo) Installation Instructions



21 . Reinstall metal shields on each side of the back of the bumper. Reinstall remaining areas of the wire loom to shields.



22 . Reinstall the bumper, fascia piece, and reconnect electrical connections.

Note: The two (2) push pins on the driver side of the vehicle at the top of the fascia piece will not be reinstalled as these existing holes are used to install electrical bracket in step #23.



23. Install electrical bracket onto bumper at the top of the grille opening as shown using 1/4" bolts and hardware.

Optional: Install breakaway switch onto the electrical bracket as shown using provided hardware.

BX2915

2025 Ford Ranger (Includes Adaptive Cruise Control, Shuttters, & EcoBoost)
2025 Ford Ranger Raptor (Includes Adaptive Cruise Control, Shuttters, & Turbo)
Installation Instructions

CUSTOMER SERVICE COMMITMENT

Blue Ox® is committed to providing you with exceptional customer care throughout your lifetime with our products. Our team is here to assist you with any questions you may have regarding the performance of your product. Simply call (402) 385-3051 and you can speak with our customer service team.

Additionally, please visit our website to see which rallies our team will be attending. For a nominal fee, our service technician will service your towing system to ensure it's in proper working condition. Also, as a commitment to our customers, should you visit our factory, you can stay at our full service Blue Ox® campground at no charge along with enjoying a factory tour.

Again, thank you for being our customer and for the confidence you have shown in the performance of our products. It is because of customers like you we enjoy the success we have today.



© 2024 Blue Ox
One Mill Road, Industrial Park
Pender, Nebraska 68047
Phone: (402) 385-3051
Fax: (402) 385-3360
www.blueox.com

General Information

1. Ensure that your product(s) are registered online at www.blueox.com. It is crucial to register your product(s) so that you may be alerted of product offerings, updates, upgrades, maintenance and safety bulletins, and/or recalls.
2. **It is the owner's responsibility to inspect all towing equipment for cracked welds, missing or worn parts and loose bolts before each towing trip.** Be sure to use Loctite® Red on all bolts and tighten to the recommended specifications.
3. **It is the owner's responsibility to hook up all towing equipment per manufacturer's instructions/ recommendations.**
4. Remove the attachment tabs when not in use (if applicable).

Notice To Baseplate Installer

1. It is YOUR responsibility to watch for:

- Oil cooler and air conditioner lines
- Electrical wires and hoses
- Missing parts or attaching points on the frame

**** If the baseplate is improperly installed and is against a wire or hose, it could cause fluid leaks or electrical shorts some time after the actual baseplate installation.**

Permanent Baseplate Safety Cable Installation

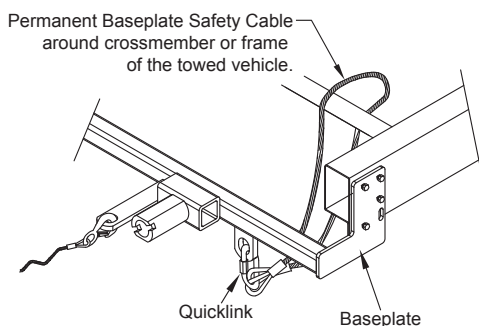
Permanent baseplate safety cables are strongly recommended when towing a vehicle with a tow bar. The principle function of the permanent baseplate safety cables is to prevent the towed vehicle from breaking loose in the event the connection between the frame of the towed vehicle and the baseplate fails or becomes disconnected. The cables must be connected from the baseplate to the frame rail or cross member of the vehicle's frame. The illustrations below show the possible arrangements recommended by Blue Ox®. Each permanent baseplate safety cable must have an adequate weight rating for the towing system. The weight rating of the two (2) cables together will not qualify.

Do not mount the permanent baseplate safety cables against wires, hoses or brake lines.

These permanent baseplate safety cables should remain installed as long as the baseplate is installed on the vehicle. Permanent baseplate safety cables are to be used in conjunction with, and NOT a replacement for legally required safety cables attaching the towed vehicle to the towing vehicle.

Option #1

(Baseplates with Convenience Link Tabs)



Option #2

(Baseplates with out Convenience Link Tabs)



BLUE OX ORIGINAL PURCHASERS THREE YEAR LIMITED WARRANTY

Automatic Equipment Manufacturing Company ("Automatic") warrants to the original (first) retail purchaser that this product, manufactured by Automatic, shall be free from defect in material and workmanship under normal use and service for a period of three years from the date of delivery.

During said three-year period, Automatic will repair or replace any parts that have been returned by the original purchaser, to the factory, transportation prepaid, and in Automatic's sole and absolute opinion found to be defective.

Limitations on Warranty Coverage:

Coverage under this warranty will be valid only if the customer warranty card is returned by the original purchaser within 30 days of purchase.

Coverage under this warranty will be effective only when a copy of the original invoice, showing date and place of purchase, accompanies any claim for warranty. This warranty is NON TRANSFERABLE.

This limited warranty will not cover, in any way or form, any alleged damages caused by incorrect or improper installation, improper use, modification or neglect of product, failure to properly service and maintain, misuse, act of God, accident or failure of the user to follow guidelines contained in the instructional material provided by Automatic.

This warranty does not cover normal wear and tear, paint or rust.

Warrantor assumes no responsibility to the owner for loss of use of product, loss of time, inconvenience or any other damage consequential or otherwise. Including, but not limited to mileage, expense of transporting of product, return shipping expense, mechanics travel time, telephone, road service, towing, and rental during repairs, travel, lodging, loss or damage to personal property or loss of earnings.

REPAIR OR REPLACEMENT AS SET FORTH IN THIS LIMITED WARRANTY IS THE SOLE EXCLUSIVE REMEDY OF THE PURCHASER. AUTOMATIC SHALL NOT BE LIABLE FOR ANY INCIDENTAL OR CONSEQUENTIAL DAMAGES FOR BREACH OF ANY EXPRESS OR IMPLIED WARRANTY ON THIS PRODUCT. EXCEPT TO THE EXTENT PROHIBITED BY APPLICABLE LAW, ANY IMPLIED WARRANTY OF MERCHANTABILITY OR FITNESS FOR A PARTICULAR PURPOSE ON THIS PRODUCT IS LIMITED IN LENGTH TO THE DURATION OF THIS WARRANTY.

Please visit <http://blueox.com/warranty/> to register your warranty



BLUE OX