



BXH3007

2017.5-2025 Jeep Compass Installation Instructions

Please read the Installation Instructions prior to installing or operating this equipment.

- Blue Ox® towing products and accessories are intended to be installed by Blue Ox® Dealers who are familiar with our products and have the equipment and knowledge necessary to do “fit work”. If needed, Blue Ox® Dealers can be found at www.blueox.com or by contacting our Customer Care Department at (402) 385-3051.
- Many Blue Ox® receiver hitches are designed to use existing holes and hardware to mount the hitch to the vehicle. Even though bolts are there, do not assume they are adequate for receiver hitch mounting. Always use the hardware supplied in the hardware kit and existing hardware as specified in the installation instructions.



If the rear of your vehicle looks different than this, please contact us at (402)385-3051.

Serial Number

Bolt Torque Specifications
Torque in Foot-Pounds for Inch Bolts

| Bolt Size | Grade 5 | Grade 8 |
|-----------|---------|---------|
| 1/4" | 10 | 14 |
| 5/16" | 19 | 29 |
| 3/8" | 33 | 47 |
| 7/16" | 54 | 78 |
| 1/2" | 78 | 119 |
| 5/8" | 154 | 230 |
| 3/4" | 257 | 380 |

Bolt Torque Specifications
Torque in Foot-Pounds for Metric Bolts

| Bolt Size | Grade 8.8 | Grade 10.9 |
|-----------|-----------|------------|
| 6MM | 6 | 8 |
| 8MM | 16 | 22 |
| 10MM | 31 | 40 |
| 12MM | 54 | 70 |
| 14MM | 89 | 117 |
| 16MM | 161 | 230 |
| 18MM | 222 | 318 |

WARNING

Failure to read and follow these instructions could result in separation of the towed item from the vehicle, causing property damage, loss of towed item, personal injury or death.

WARNING

Refer to your vehicle’s owner’s manual for maximum towing capacity. **DO NOT** exceed vehicle, pin or hitch weight ratings - failure to follow vehicle manufacturer’s recommendations could result in damage to your vehicle, personal injury or death.

BXH3007
2017.5-2025 Jeep Compass
Installation Instructions

| Hitch Type | Max Gross Trailer Weight (GTW) | Max Tongue Weight (TW) |
|---------------------|--------------------------------|------------------------|
| Weight Carrying | 4000 lb. (1814 kg) | 600 lb. (272 kg) |
| Weight Distributing | Do Not Use with | Spring Bars |

Instruction Notes: Rear plastic piece is removed and reinstalled on Trailhawk models. The exhaust is lowered and reinstalled for the receiver hitch installation for all models. Some trimming and drilling is required.

Place all components that are removed on a flat, sturdy surface. All items will be reinstalled unless otherwise noted after the receiver hitch is installed.

The dimensional variations between otherwise identical vehicles can be considerable. While the receiver hitch was designed for easy installation, it may be necessary to tailor the hitch slightly to compensate for vehicle manufacturer's tolerances.

NOTICE

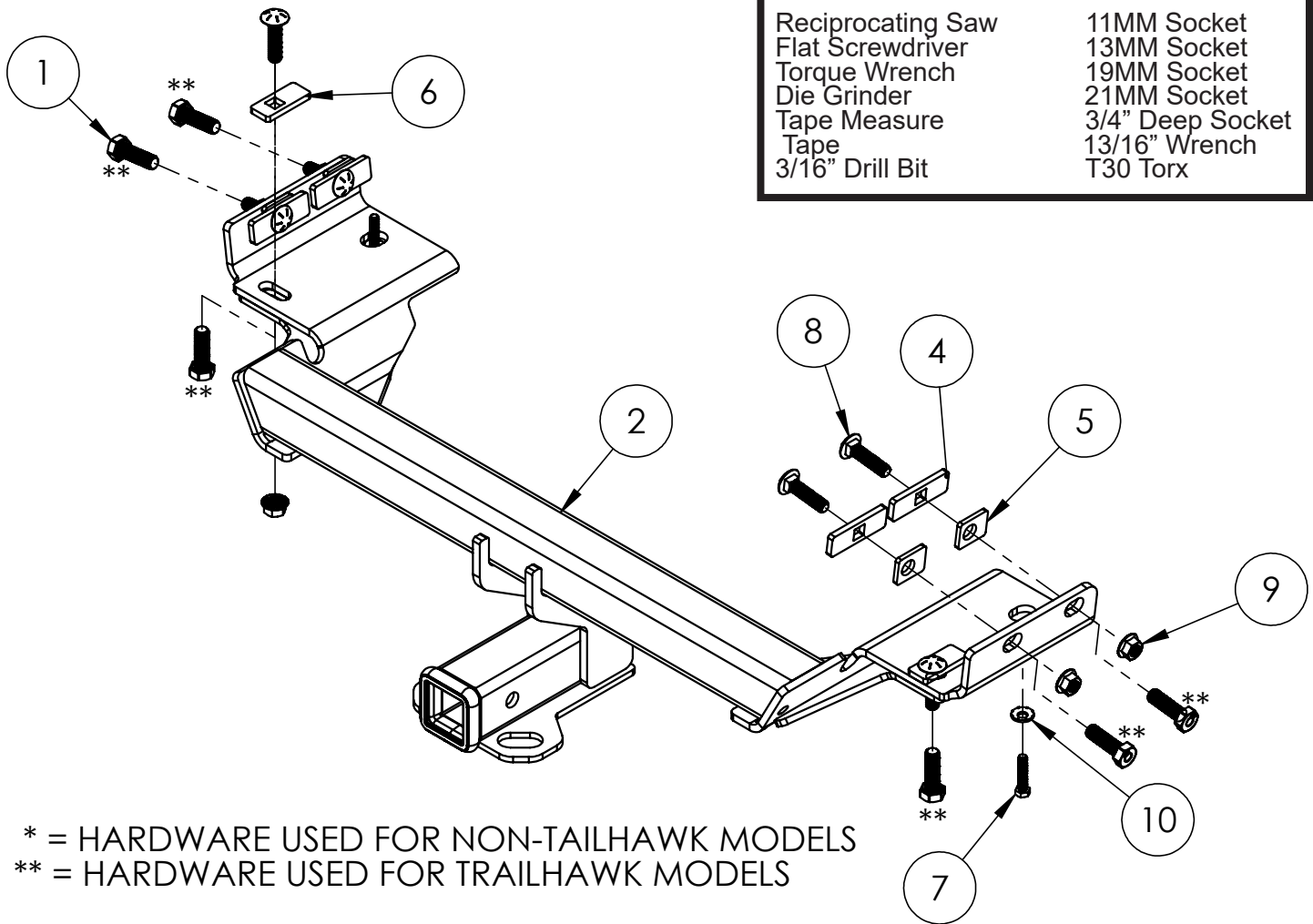
- Handling of some cosmetic parts when installing this product may require the use of protective covers, rags, specialty tools, etc. to prevent damage.
- When using power drills be aware of the dangers of torque and drill bit length.
- When using a reciprocating saw be aware of objects behind the cutting surface.
- Use a good quality paint to spray cut edges of frame to prevent rusting.
- Be sure that **ALL** electrical connections are plugged in and accessories are functioning properly.
- The receiver hitch is tested to your vehicle's tow ratings, verify vehicle's tow rating because it may differ from receiver and use whichever is less. Exceeding this weight will void the manufacturer's warranty.
- Tighten all bolts according to the torque chart provided unless specified.
- Dealer or installer be certain the user receives these instruction sheets.
- If the receiver hitch is in an accident, it must be replaced. **DO NOT** use it again! An accident can cause unseen damage and using it again could result in more damage or serious injury. **DO NOT** use the hitch if it is damaged or missing parts.
- **DO NOT** alter this product in any way. Modifying this product could change the integrity and lead to a loss of connection between the towed item and the tow vehicle.
- The weight rating of the hitch assembly must be greater than the gross weight of the trailer.
- Without proper information, towing can be dangerous. Understand all risks involved with towing before starting. For more information on towing safety, see "**The Trailer Handbook: A Guide to Understand Trailer and Towing Safety**" from the *National Association of Trailer Manufacturers*, www.NATM.com.
- Check that all bolted connections are at the correct torque specification on a regular basis. Complete a visual inspection before towing each time.
- Ensure that installation is performed by someone who is aware of the risks and has knowledge of hazards and proper safety procedures involved with adding components to the chassis of a vehicle and the tools needed for installation.

BXH3007

2017.5-2025 Jeep Compass

Installation Instructions

| Tools Required | |
|-----------------------|------------------|
| Reciprocating Saw | 11MM Socket |
| Flat Screwdriver | 13MM Socket |
| Torque Wrench | 19MM Socket |
| Die Grinder | 21MM Socket |
| Tape Measure | 3/4" Deep Socket |
| Tape | 13/16" Wrench |
| 3/16" Drill Bit | T30 Torx |



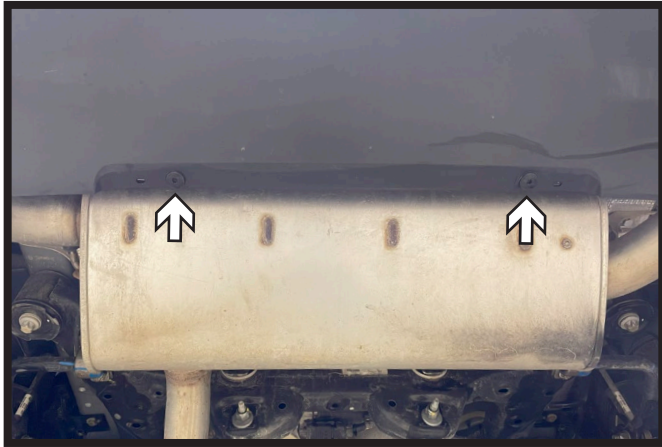
* = HARDWARE USED FOR NON-TAILHAWK MODELS
 ** = HARDWARE USED FOR TRAILHAWK MODELS

| Item No. | Part No. | Description | Qty. |
|----------|-----------------------|---|------|
| 1..... | Existing** | M14 x 2MM x 45MM Bolts..... | 6 |
| 2..... | 61-8742*/** | Receiver Hitch, 2"..... | 1 |
| 3..... | 63-5071*/** | Bolt Bag & Manual Package..... | 1 |
| 4..... | 101-10556* | 1/4" x 1" x 3" Plate w/ 1/2" Carriage Bolt Square Hole | 4 |
| 5..... | 101-11063** | 7GA x 1-1/4" x 1-1/2" Spacer Sheet w/ 5/8" Hole..... | 4 |
| 6..... | 101-11233* | 1/4" x 1" x 2-3/8" Plate w/ 1/2" Square Hole @ 7/8"..... | 2 |
| 7..... | 201-0409*/** | 8MM-1.25 x 40MM Hex Head Bolt, Grade 8.8..... | 2 |
| 8..... | 201-1179* | 1/2"-13 x 2" Carriage Bolt, Grade 8, YZP..... | 6 |
| 9..... | 202-0267* | 1/2"-13 Whiz Flange Nut, Grade 8, ZP..... | 6 |
| 10..... | 203-0219*/** | 3/8" Conical Washer, YZP..... | 2 |
| 11..... | 299-0536**(not shown) | 6.3MM Plastic Rivets..... | 2 |
| 12..... | 229-0955*(not shown) | 1/2" x 48" Bolt Leader..... | 6 |

Important:

Use only genuine factory replacement parts on your hitch receiver. Do **NOT** substitute homemade or non-typical parts. If a bolt is lost or in need of replacement, for your safety and the preservation of your hitch receiver, be sure to use a replacement bolt of the same grade (In most cases it will be Grade 8, please reference the parts list above). Replacement parts may be ordered through your nearest Blue Ox® Dealer or Distributor. Failing to follow and/or altering these installation instructions in either installation or required equipment will void the manufacturer's warranty.

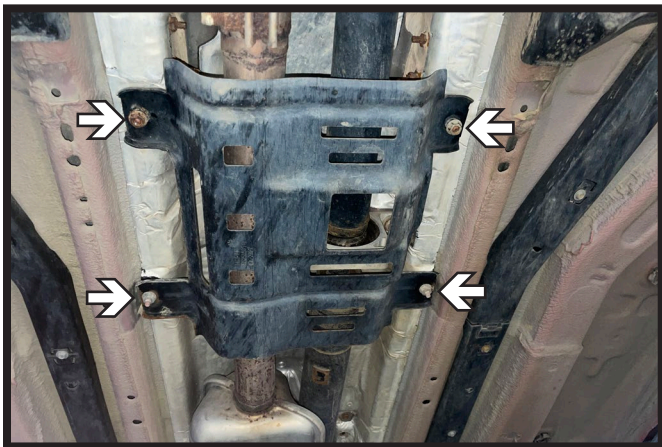
BXH3007
2017.5-2025 Jeep Compass
Installation Instructions



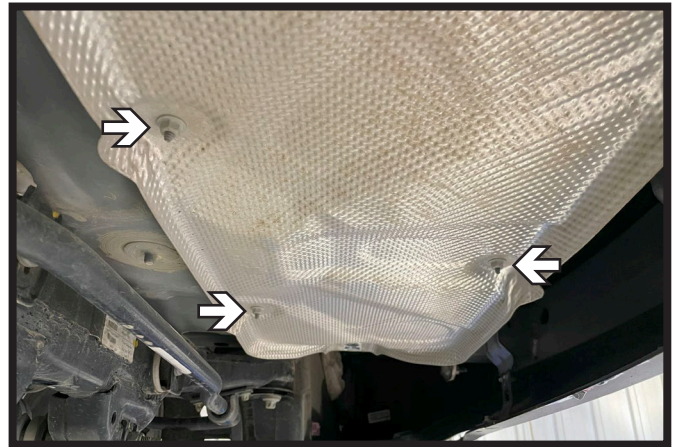
1. Using a T30 Torx, remove the two (2) bolts from the bottom of the rear fascia.



2. Support exhaust using a jack or stand. Using a 13MM socket, remove the one (1) bolt from the exhaust bracket. Do this on both sides of the vehicle. For Non-Trailhawk Models, lower exhaust at this time to allow for receiver hitch installation.



3. **Tailhawk Models Only:** Using a 13MM socket, remove the four (4) nuts from the front center support bracket. Remove bracket and set aside to be reinstalled later. Lower exhaust to allow for receiver hitch installation.



4. Using a 11MM socket, remove the three (3) nuts from the heat shield. Remove heat shield and set aside to be reinstalled later.

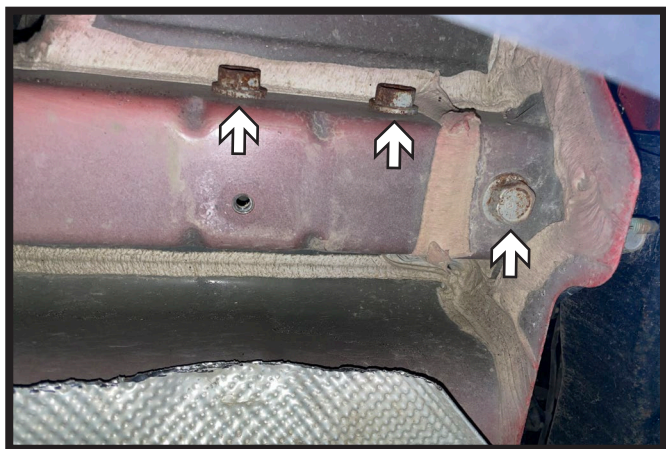
BXH3007
2017.5-2025 Jeep Compass
Installation Instructions



5. Measure 4-1/2" from each end and mark. Using a reciprocating saw, remove the marked area from each side.



6. Reinstall the heat shield.



7. **Trailhawk Models Only:** Using a 21MM socket, remove the three (3) existing bolts from the frame. Do this on both sides of the vehicle.



8. **Trailhawk Models Only:** Using a 3/16" drill bit, drill out the two (2) pop rivets, one (1) on each side, from the bottom of the rear fascia.

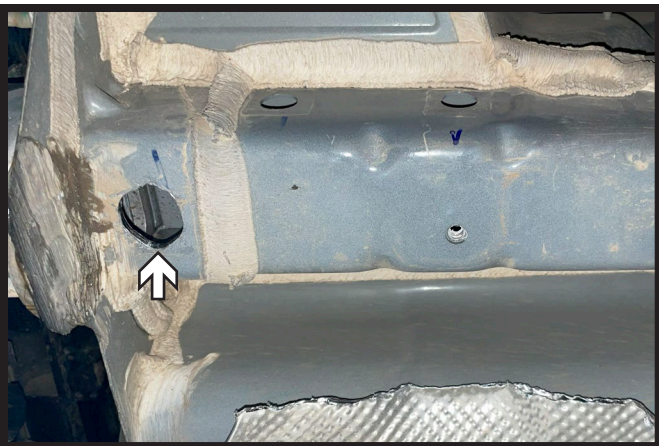
BXH3007
2017.5-2025 Jeep Compass
Installation Instructions



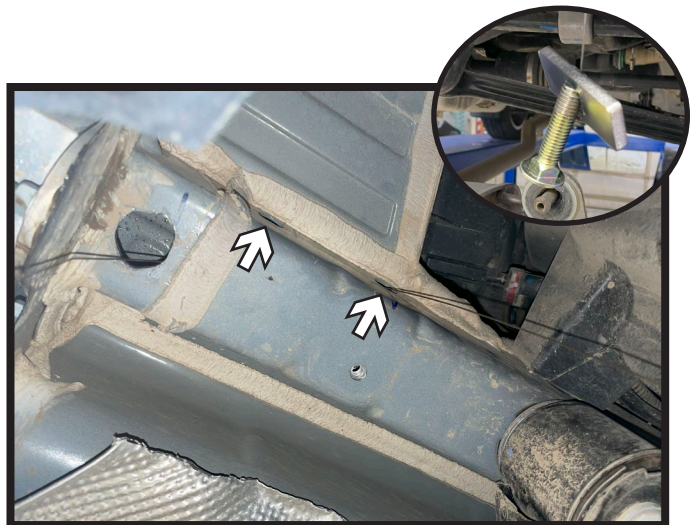
9. **Trailhawk Models Only:** Using a flat screwdriver, unclip the plastic piece from the rear fascia. Remove and set aside to be reinstall later.



10. **Non-Trailhawk Models Only:** Remove the tape from the frame. Do this on both sides of the vehicle.

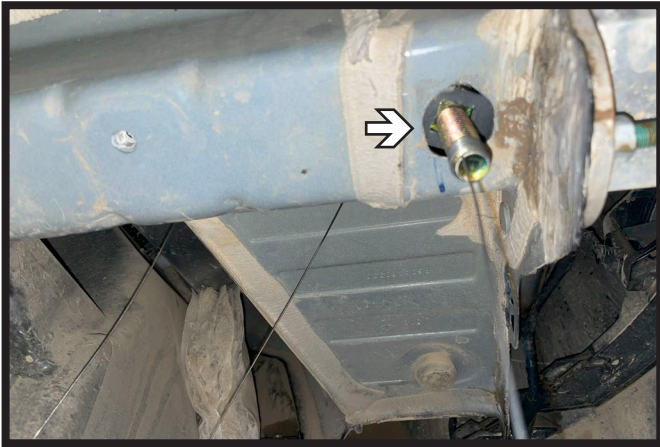


11. **Non-Trailhawk Models Only:** Remove the sticker covering the rear frame hole. Using a die grinder, expand the frame hole to 1-1/8" creating an access hole for the receiver hitch hardware. Do this on both sides of the vehicle.

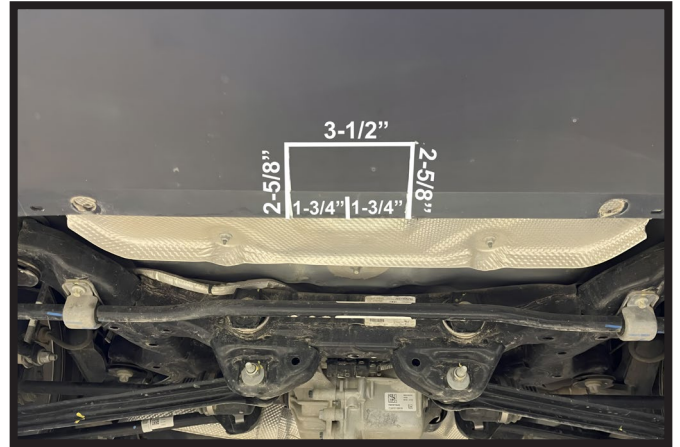


12. **Non-Trailhawk Models Only:** Starting with most forward hole on the side of the frame, feed lead wire from the forward hole to the bottom access hole in the frame. Place spacer plate onto wire then attach lead wire to the end of the 1/2" carriage bolt (inset). Pull bolt and spacer plate through the frame but do not pull bolt through the hole. Repeat with rear side hole. Do this on both sides of the vehicle.

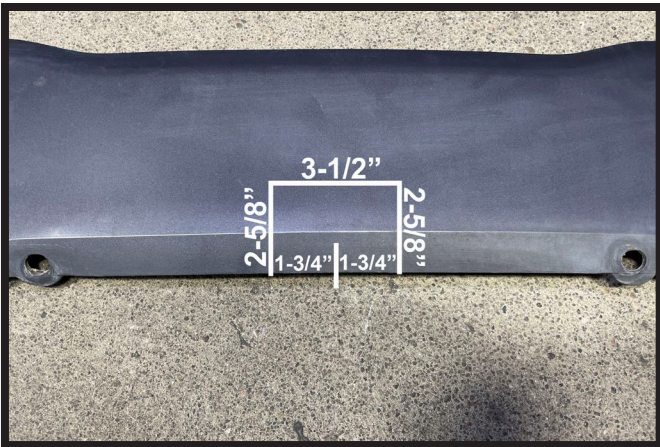
BXH3007
2017.5-2025 Jeep Compass
Installation Instructions



13. **Non-Trailhawk Models Only:** Place spacer plate onto wire then attach lead wire to the end of the 1/2" carriage bolt. Feed bolt then plate through the access hole. Ensure spacer plate is sitting flush against inner frame and the bolt is hanging vertically. Do this on both sides of the vehicle.



14a. **Non-Trailhawk Models Only:** Find the center of the rear fascia, measuring from the bolt holes, and mark. Measure 1-3/4" in each direction from the center and mark. Then measure 2-5/8" up from the bottom of the fascia and mark creating a 3-1/2" x 2-5/8" rectangle.

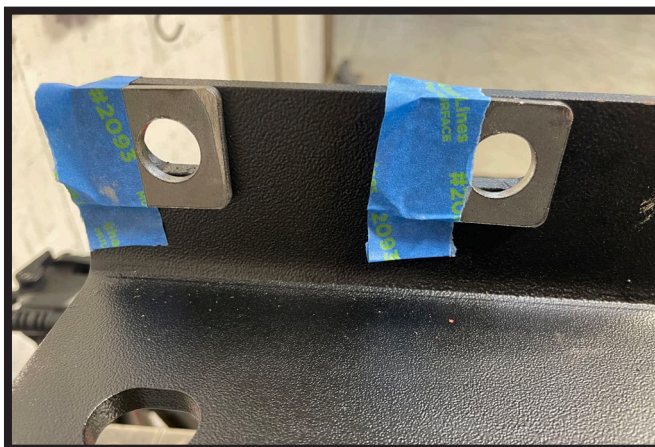


14b. **Trailhawk Models Only:** Find the center of the plastic piece, measuring from the bolt holes, and mark. Measure 1-3/4" in each direction from the center and mark. Then measure 2-5/8" up from the bottom of the plastic piece and mark creating a 3-1/2" x 2-5/8" rectangle.



15. Using a reciprocating saw remove the marked area.

BXH3007
2017.5-2025 Jeep Compass
Installation Instructions



16. **Trailhawk Models Only:** Center spacer plate over the side holes on the inside of the hitch and tape in place as shown. Do this on both sides of the receiver hitch.



- 17a. **Non-Trailhawk Models Only:** Raise the receiver hitch into place so that it sits between the rear fascia and the brackets that hold the rear fascia in place. Remove lead wires and loosely install a 1/2" whiz flange nut onto bolt. Do this on both sides of the vehicle.

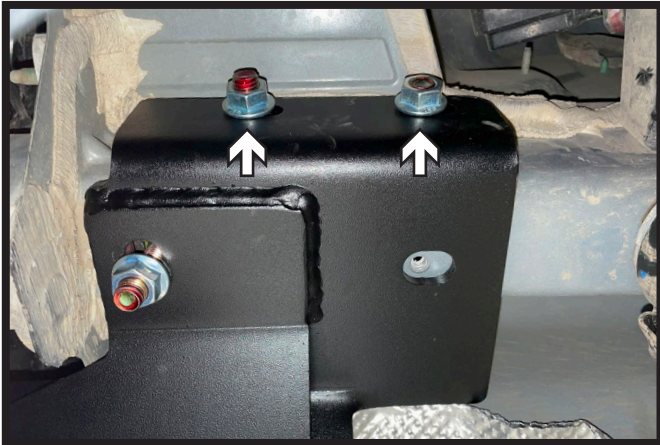
Note: When installing the whiz nuts be careful not to push bolts into frame.



- 17b. **Trailhawk Models Only:** Raise the receiver hitch into place so that it sits between the rear fascia and the brackets that hold the rear fascia in place. Start the existing bottom rear bolt, leave loose. Do this on both sides of the vehicle.

Note: May need to adjust rear tow hook to get holes to line-up.

BXH3007
2017.5-2025 Jeep Compass
Installation Instructions



18a. **Non-Trailhawk Models Only:** Pull side bolts through the frame. Remove lead wires and loosely install a 1/2" whiz flange nut onto each bolt. Do this on both sides of the vehicle.



18b. **Trailhawk Models Only:** Loosely install the existing bolts into the two (2) side holes. Do this on both sides of the vehicle.



19. Tighten side bolts, alternating between the driver side and passenger side. Once side bolts are tightened, tighten bottom rear bolt on each side of the vehicle.

Note: When tightening the side bolts, ensure the bottom forward hole does not shift to cover bolt hole.

**** Tighten 1/2" bolts to 119 ft/lbs. ****

**** Tighten M14 bolts to 117 ft/lbs. ****

BXH3007
2017.5-2025 Jeep Compass
Installation Instructions



20a. **Non-Trailhawk Models Only:** Using a reciprocating saw, remove the triangle points from the exhaust bracket. Do this on both sides of the vehicle.



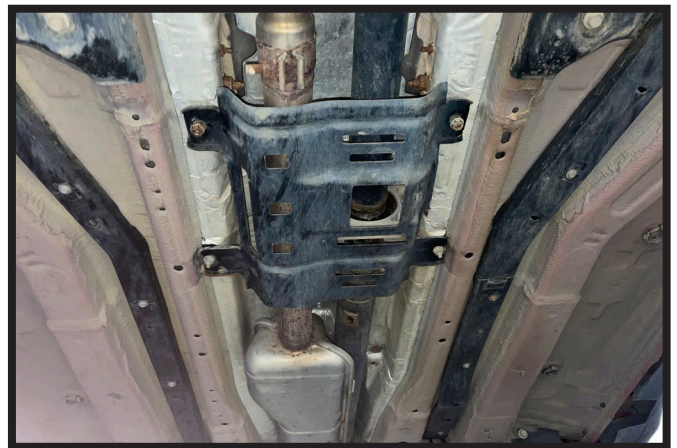
20b. **Trailhawk Models Only:** Bend down the tabs on the exhaust bracket or use a reciprocating saw to remove the tabs from the exhaust bracket. Do this on both sides of the vehicle.



21. Raise the exhaust and reinstall the exhaust bracket on each side of the vehicle using the provided 8MM bolt with conical washer. Ensure the teeth of the conical washer are towards the hitch. Then tighten bottom rear bolts.

Note: May need to spray soapy water onto exhaust hanger to allow for easier maneuvering of the exhaust bracket.

**** Tighten 8MM bolts to 16 ft/lbs. ****



22. **Trailhawk Models Only:** Reinstall front center support bracket.

BXH3007
2017.5-2025 Jeep Compass
Installation Instructions



23a. **Non-Trailhawk Models Only:** Reattach rear fascia to brackets using existing bolts.



23b. **Trailhawk Models Only:** Reinstall the rear plastic piece using the provided rivets and reattach rear fascia to brackets using existing bolts.

CUSTOMER SERVICE COMMITMENT

Blue Ox® is committed to providing you with exceptional customer care throughout your lifetime with our products. Our team is here to assist you with any questions you may have regarding the performance of your product. Simply call (402) 385-3051 and you can speak with our customer service team.

Additionally, please visit our website to see which rallies our team will be attending. For a nominal fee, our service technician will service your towing system to ensure it's in proper working condition. Also, as a commitment to our customers, should you visit our factory, you can stay at our full service Blue Ox® campground at no charge along with enjoying a factory tour.

Again, thank you for being our customer and for the confidence you have shown in the performance of our products. It is because of customers like you we enjoy the success we have today.

© 2023 Blue Ox
One Mill Road, Industrial Park
Pender, Nebraska 68047
Phone: (402) 385-3051
Fax: (402) 385-3360
www.blueox.com

BXH3007
2017.5-2025 Jeep Compass
Installation Instructions

General Information

1. Ensure that your product(s) are registered online at www.blueox.com. It is crucial to register your product(s) so that you may be alerted of product offerings, updates, upgrades, maintenance and safety bulletins, and/or recalls.
2. **It is the owner's responsibility to inspect all towing equipment for cracked welds, missing or worn parts and loose bolts before each towing trip.** Be sure to tighten all bolts to the recommended specifications.
3. **It is the owner's responsibility to hook up all towing equipment per manufacturer's instructions/recommendations.**

Notice To Receiver Hitch Installer

1. **It is YOUR responsibility to watch for:**

- Electrical wires and hoses
- Missing parts or attaching points on the frame

** If the hitch receiver is improperly installed and is against a wire or hose, it could cause fluid leaks or electrical shorts some time after the actual hitch installation.

CUSTOMER SERVICE COMMITMENT

Blue Ox® is committed to providing you with exceptional customer care throughout your lifetime with our products. Our team is here to assist you with any questions you may have regarding the performance of your product. Simply call (402) 385-3051 and you can speak with our customer service team.

Additionally, please visit our website to see which rallies our team will be attending. For a nominal fee, our service technician will service your towing system to ensure it's in proper working condition. Also, as a commitment to our customers, should you visit our factory, you can stay at our full service Blue Ox® campground at no charge along with enjoying a factory tour.

Again, thank you for being our customer and for the confidence you have shown in the performance of our products. It is because of customers like you we enjoy the success we have today.

© 2023 Blue Ox
One Mill Road, Industrial Park
Pender, Nebraska 68047
Phone: (402) 385-3051
Fax: (402) 385-3360
www.blueox.com

BLUE OX ORIGINAL PURCHASERS LIMITED LIFETIME WARRANTY

Automatic Equipment Manufacturing Company ("Automatic") warrants to the original (first) retail purchaser that this product, manufactured by Automatic, shall be free from defect in material and workmanship under normal use and service for as long as the original retail purchaser owns the product.

During said period, Automatic will repair or replace any parts that have been returned by the original purchaser, to the factory, transportation prepaid, and in Automatic's sole and absolute opinion found to be defective.

Limitations on Warranty Coverage:

Coverage under this warranty will be valid only if the customer warranty card is returned by the original purchaser within 30 days of purchase.

Coverage under this warranty will be effective only when a copy of the original invoice, showing date and place of purchase, accompanies any claim for warranty. This warranty is NON TRANSFERABLE.

This limited warranty will not cover, in any way or form, any alleged damages caused by incorrect or improper installation, improper use, modification or neglect of product, failure to properly service and maintain, misuse, act of God, accident or failure of the user to follow guidelines contained in the instructional material provided by Automatic.

This warranty does not cover normal wear and tear, paint or rust.

Warrantor assumes no responsibility to the owner for loss of use of product, loss of time, inconvenience or any other damage consequential or otherwise. Including, but not limited to mileage, expense of transporting of product, return shipping expense, mechanics travel time, telephone, road service, towing, and rental during repairs, travel, lodging, loss or damage to personal property or loss of earnings.

REPAIR OR REPLACEMENT AS SET FORTH IN THIS LIMITED WARRANTY IS THE SOLE EXCLUSIVE REMEDY OF THE PURCHASER. AUTOMATIC SHALL NOT BE LIABLE FOR ANY INCIDENTAL OR CONSEQUENTIAL DAMAGES FOR BREACH OF ANY EXPRESS OR IMPLIED WARRANTY ON THIS PRODUCT. EXCEPT TO THE EXTENT PROHIBITED BY APPLICABLE LAW, ANY IMPLIED WARRANTY OF MERCHANTABILITY OR FITNESS FOR A PARTICULAR PURPOSE ON THIS PRODUCT IS LIMITED IN LENGTH TO THE DURATION OF THIS WARRANTY.

Please visit <http://blueox.com/warranty/> to register your warranty

