



BX1757

2022-2024 Chevy Silverado 1500 ZR2 (Includes Adaptive Cruise Control, EcoBoost, & Bottom Shutters) Installation Instructions

Attachment Tab Height: 22"

Attachment Tab Width: 30"

Serial Number

Please read BOTH these Installation Instructions and the General Information sheet prior to installing or operating this equipment.

1. Blue Ox® towing products and accessories are intended to be installed by Blue Ox® Dealers who are familiar with our products and have the equipment and knowledge necessary to do "fit work". If needed, Blue Ox® Dealers can be found at www.blueox.com or by contacting our Customer Care Department at (402) 385-3051.
2. Many Blue Ox® baseplates are designed to use existing holes and hardware to mount the baseplate to the towed vehicle. Even though bolts are there, do not assume they are adequate for baseplate mounting. Always use the hardware supplied in the hardware kit and existing hardware as specified in the installation instructions.

Bolt Torque Specifications

Torque in Foot-Pounds for Inch Bolts

Bolt Size	Grade 5	Grade 8
1/4"	10	14
5/16"	19	29
3/8"	33	47
7/16"	54	78
1/2"	78	119
5/8"	154	230
3/4"	257	380



If the front of your vehicle looks different than this, please contact us at (402)385-3051.

Reference your vehicle owner's manual for manufacturer's towing specifications.

Bolt Torque Specifications

Torque in Foot-Pounds for Metric Bolts

Bolt Size	Grade 8.8	Grade 10.9
6MM	6	8
8MM	16	22
10MM	31	40
12MM	54	70
14MM	89	117
16MM	161	230
18MM	222	318

WARNING

Failure to read and follow these instructions could result in separation of the towed vehicle from the tow bar, causing property damage, loss of towed vehicle, personal injury or death.

BX1757
2022-2024 Chevy Silverado 1500 ZR2
(Includes Adaptive Cruise Control, EcoBoost, & Bottom Shutters)
Installation Instructions

Instruction Notes: The fascia cover, grille, bumper, and skid plate are removed and reinstalled for the baseplate installation. The tow hooks are removed but not reinstalled during baseplate installation. Some drilling and trimming is required.

Place all components that are removed on a flat, sturdy surface. All items will be reinstalled unless otherwise noted after the baseplate is installed.

The dimensional variations between otherwise identical vehicles can be considerable. While the baseplate was designed for easy installation, it may be necessary to tailor the baseplate slightly to compensate for vehicle manufacturer's tolerances.

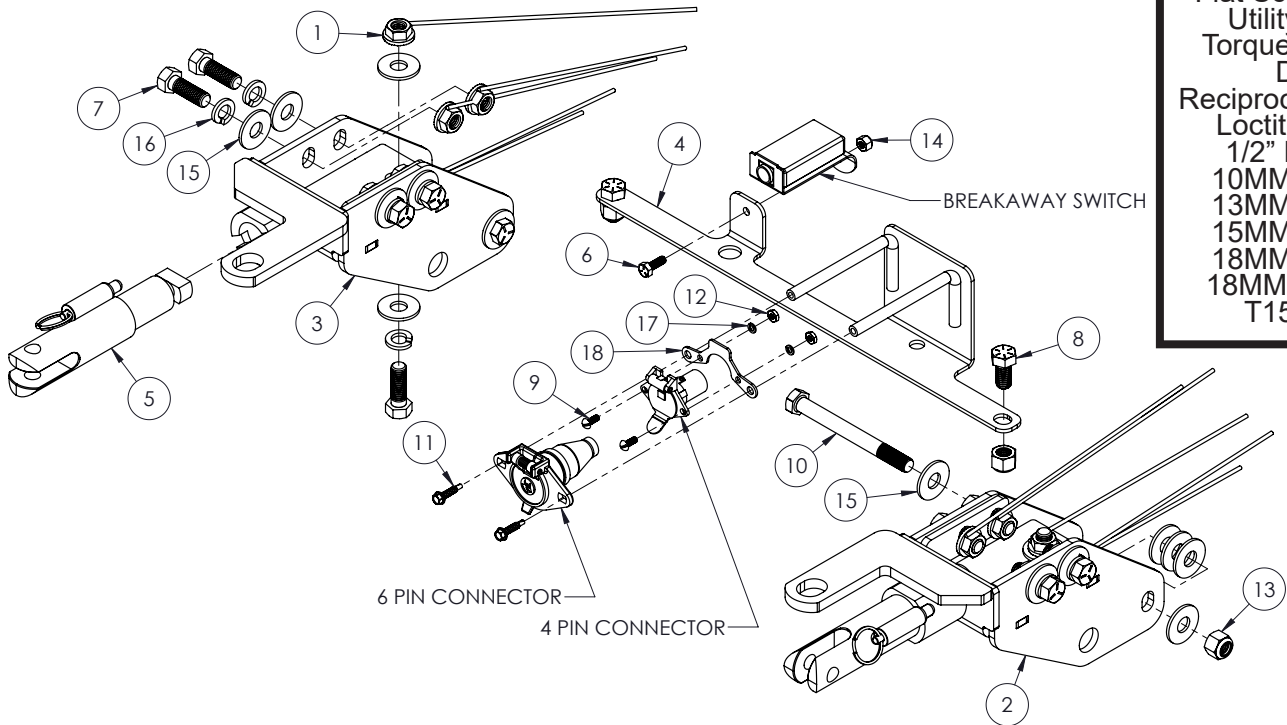
NOTICE

- Handling of some cosmetic parts when installing this product may require the use of protective covers, rags, specialty tools, etc. to prevent damage.
- When using power drills be aware of the dangers of torque and drill bit length.
- When using a reciprocating saw be aware of objects behind the cutting surface.
- Use a good quality paint to spray cut edges of frame to prevent rusting.
- Be sure that **ALL** electrical connections are plugged in and accessories are functioning properly before reinstalling the fascia.
- The baseplate is computer tested to your vehicle's GVWR, exceeding this weight will void the manufacturer's warranty.
- Be sure to use a sufficient amount of Loctite® Red on all bolt threads before tightening. Tighten all bolts according to the torque chart provided unless specified.
- Dealer or installer be certain the user receives these instruction sheets.
- If the baseplate is in an accident, it must be replaced. **DO NOT** use it again! An accident can cause unseen damage and using it again could result in more damage or serious injury. **DO NOT** use the baseplate if it is damaged or missing parts.

BX1757
 2022-2024 Chevy Silverado 1500 ZR2
 (Includes Adaptive Cruise Control, EcoBoost, & Bottom Shutters)
 Installation Instructions

Tools Required

Flat Screwdriver
 Utility Knife
 Torque Wrench
 Drill
 Reciprocating Saw
 Loctite® RED
 1/2" Drill Bit
 10MM Socket
 13MM Socket
 15MM Socket
 18MM Socket
 18MM Wrench
 T15 Torx

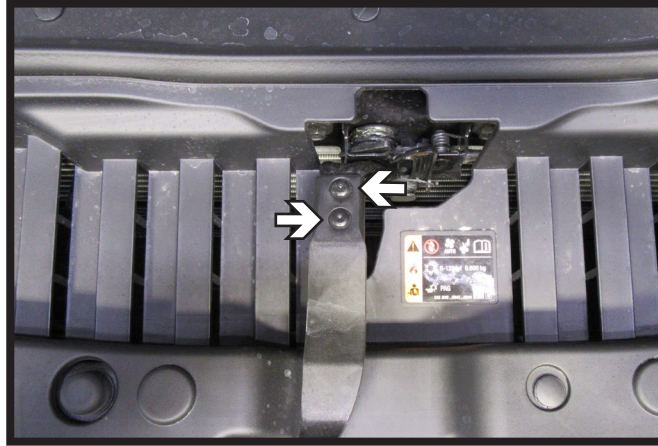


Item No.	Part No.	Description	Qty.
1.....	61-4029	1/2"-13 Whiz Nut w/ 10" Wire.....	10
2.....	61-8622	BX1757 Baseplate, DS	1
3.....	61-8623	BX1758 Baseplate, PS	1
4.....	61-8624	BX1757 Electrical Mounting Bracket	1
5.....	62-3468	Attachment Tab Assembly with Hole.....	2
6.....	201-0050	1/4"-20 x 3/4" Hex Head Bolt, Grade 5, ZP.....	1
7.....	201-0051	1/2"-13 x 1-1/2" Hex Head Bolt, Grade 5	10
8.....	201-0060	1/2"-13 x 1" Hex Head Bolt, Grade 5, ZP.....	2
9.....	201-0192	#10-32 1/2" Round Slotted Head Screw	2
10.....	201-0786	1/2"-13 x 5" Hex Head Bolt, Grade 5, ZP.....	2
11.....	201-0979	#12-14 x 1" Self Drilling Screw, ZP	2
12.....	202-0047	#10-32 Hex Nut.....	2
13.....	202-0094	1/2"-13 Hex Nylon Insert Lock Nut, ZP	4
14.....	202-0102	1/4"-20 Hex Nylon Nut, ZP.....	1
15.....	203-0005	1/2" Flat Washer	22
16.....	203-0012	1/2" Lock Washer, ZP	10
17.....	203-0054	#10 Lock Washer, ZP.....	2
18.....	299-0685	Electrical Bracket.....	1
19.....	226-0049(not shown)	Class IV Safety Cables	2
20.....	229-0512(not shown)	1/2" Quicklink, ZP	2
21.....	290-0437(not shown)	Black Cap Plug Receiver	2

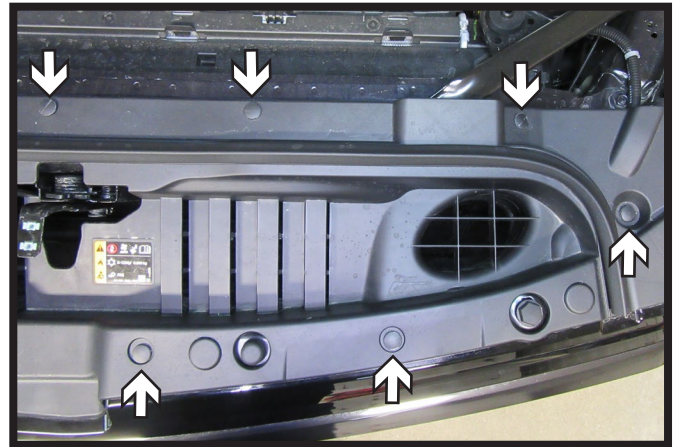
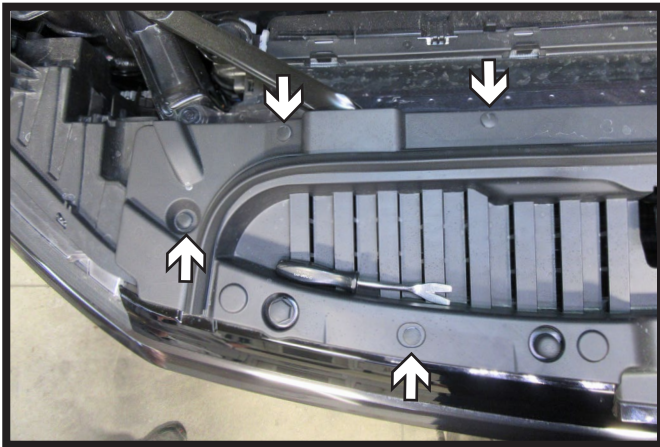
Important:

Use only genuine factory replacement parts on your baseplate. Do **NOT** substitute homemade or non-typical parts. If a bolt is lost or in need of replacement, for your safety and the preservation of your baseplate, be sure to use a replacement bolt of the same grade (In most cases it will be Grade 5, please reference the parts list above). Replacement parts may be ordered through your nearest Blue Ox® Dealer or Distributor. Failing to follow and/or altering these installation instructions in either installation or required equipment will void the manufacturer's warranty. Towing behind a non-motorized vehicle will void the warranty.

BX1757
2022-2024 Chevy Silverado 1500 ZR2
(Includes Adaptive Cruise Control, EcoBoost, & Bottom Shutters)
Installation Instructions

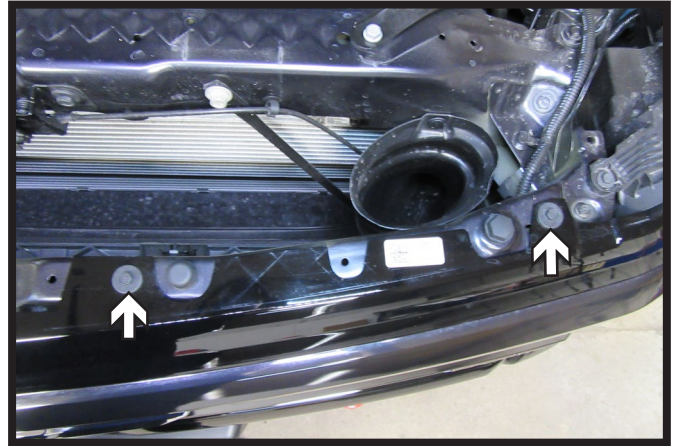


1. Using a T15 Torx, remove the two (2) bolts from the handle on the top edge of the fascia. Remove and set aside to be reinstalled later.



2. Remove the ten (10) push pins from along the top of the fascia cover. Remove fascia cover and set aside to be reinstalled later.

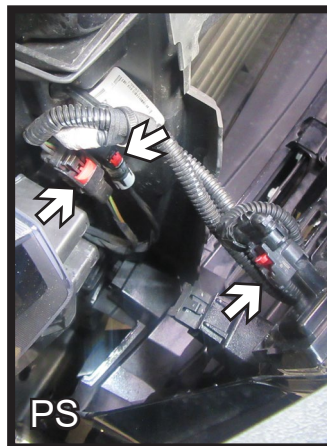
BX1757
2022-2024 Chevy Silverado 1500 ZR2
(Includes Adaptive Cruise Control, EcoBoost, & Bottom Shuttters)
Installation Instructions



3. Using a 7MM socket, remove the four (4) bolts, two (2) on each side, from the top of the fascia.

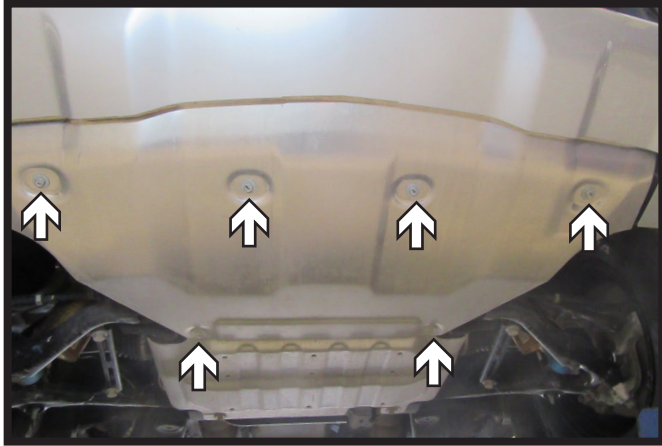


- 4a. Remove grille by pulling outward on top corners to release push pins on each side. Then pull outward on the bottom corners of the grille to release remaining push pins. Pull upward and outward on the grille to remove.

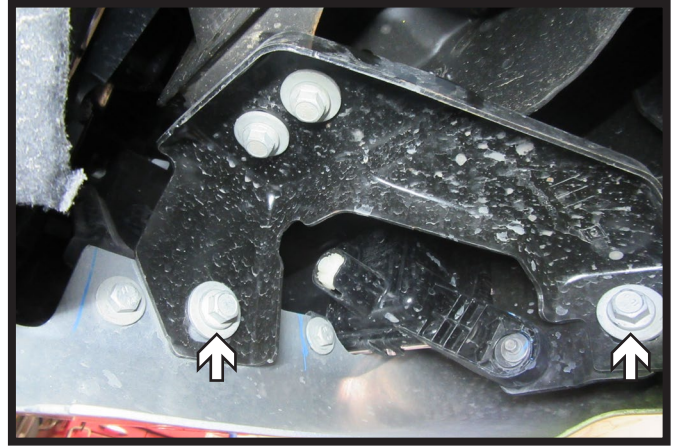


- 4b. As the grille is removed, unplug the three (3) electrical connections on the passenger side and one (1) electrical connection on the driver side the vehicle (white). Then unplug the one (1) hose (gray) on the driver side of the vehicle. Remove grille and set aside to be reinstalled.

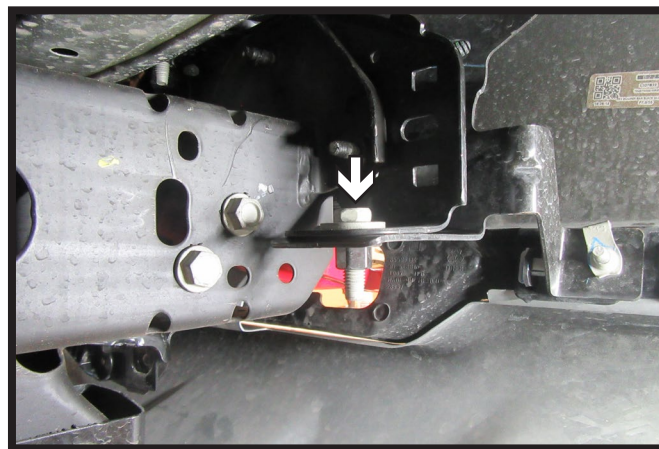
BX1757
2022-2024 Chevy Silverado 1500 ZR2
(Includes Adaptive Cruise Control, EcoBoost, & Bottom Shutters)
Installation Instructions



5. Using a 13MM socket, remove the six (6) bolts from the skid plate on the underside of the vehicle. Remove skid plate and set aside to be reinstalled later.



6. Using a 15MM socket, remove two (2) bolts from the support bracket behind the bumper on the underside of the vehicle. Do this on both sides of the vehicle.



7. Using an 18MM socket, remove the one (1) bolt next to the tow hook housing behind the bumper. Do this on both sides of the vehicle.

BX1757
2022-2024 Chevy Silverado 1500 ZR2
(Includes Adaptive Cruise Control, EcoBoost, & Bottom Shutters)
Installation Instructions

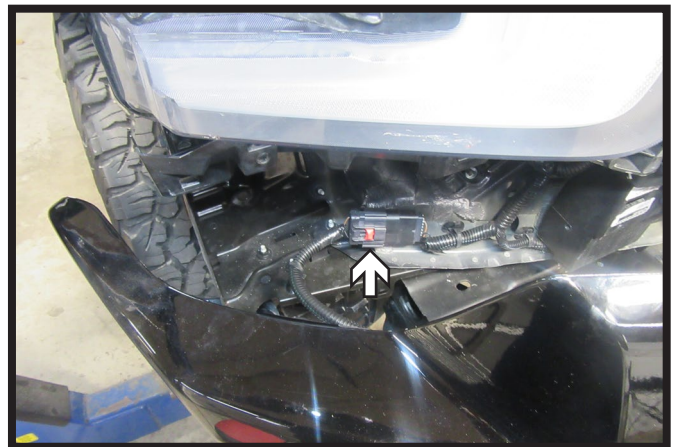


8. Remove the plastic shroud above the bumper by removing one (1) push pin from each corner of the shroud next to the shutter housing. Then pull outward on the shroud removing the remaining eight (8) push pins. The plastic shroud will not be reinstalled.

Note: Three (3) of the push pins on the driver side of the vehicle attached to the loom will be reinstalled later.

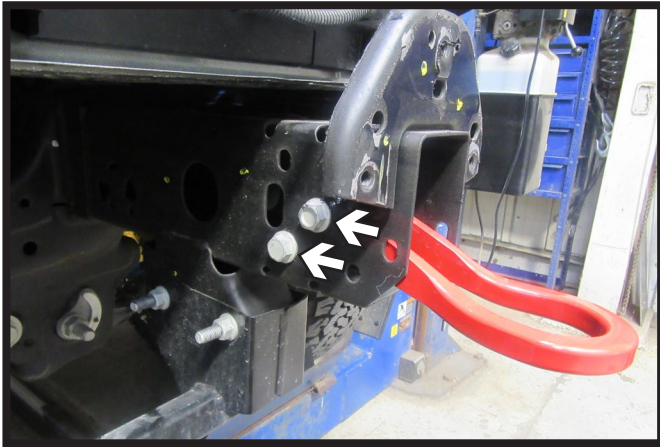


9. Using an 18MM socket, remove the two (2) bolts from the top of the bumper.

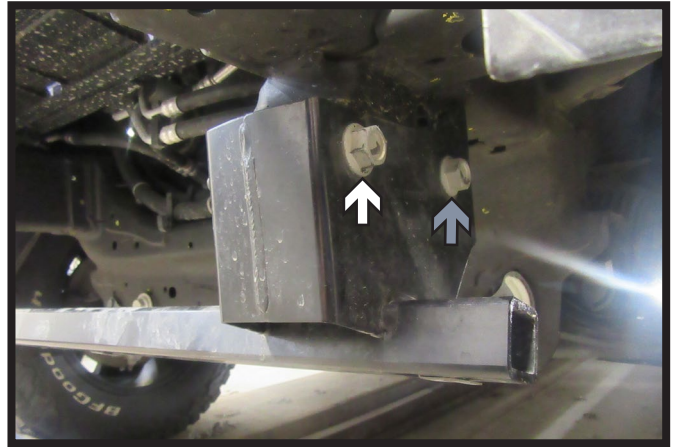


10. Unplug the electrical connection on the passenger side of the vehicle. Remove the bumper and set aside to be reinstalled later.

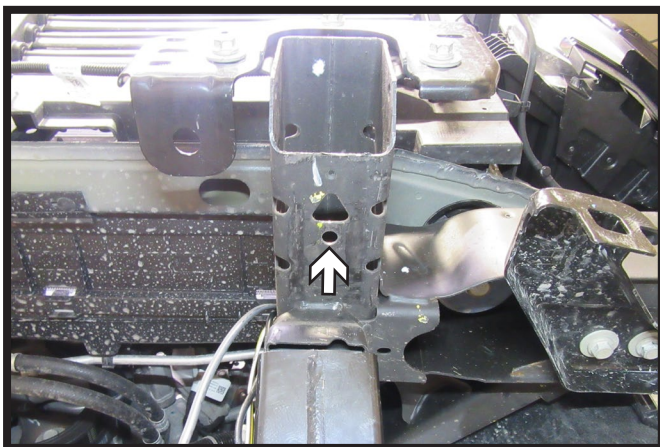
BX1757
2022-2024 Chevy Silverado 1500 ZR2
(Includes Adaptive Cruise Control, EcoBoost, & Bottom Shuttters)
Installation Instructions



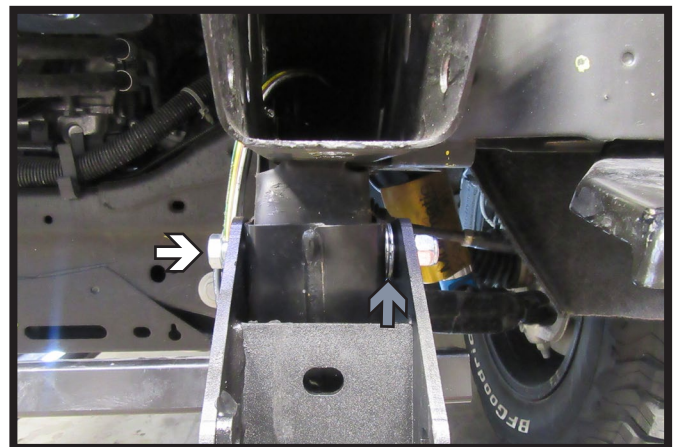
11. Using an 18MM socket, remove the two (2) bolts from the tow hook. Remove tow hook, it will not be reinstalled. Do this on both sides of the vehicle.



12. Using an 18MM socket, remove the front bolt (white) from the bracket under the tow hook housing. Then loosen, but do not remove, the back bolt (gray). Do this on both sides of the vehicle.

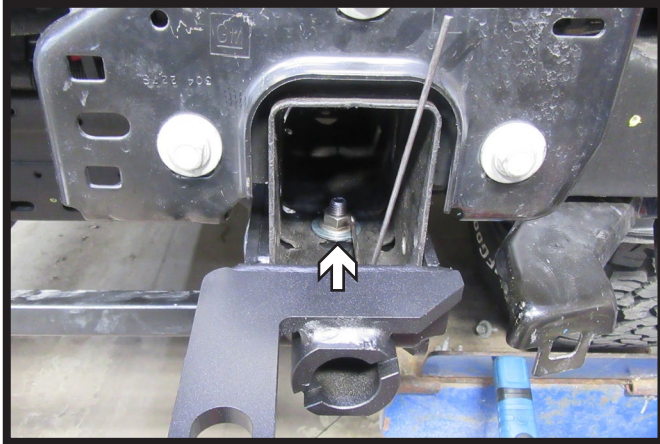


13. Using a 1/2" drill bit, drill out the hole on the bottom of the tow hook housing. Do this on both sides of the vehicle.



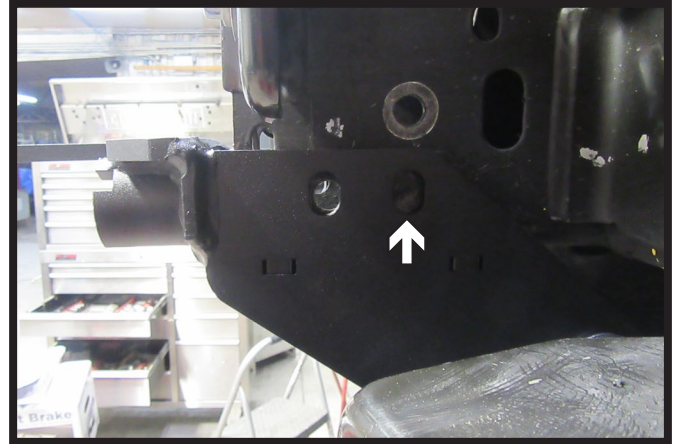
14. Slide baseplate onto bracket below tow hook housing. Start one (1) 1/2" x 5" bolt with hardware into the back hole on the baseplate. Install one (1) washer on each side of the baseplate and two (2) to three (3) washers (gray), as able, between the bracket and the baseplate as shown. Then start nylon lock nut. Leave loose. Do this on both sides of the vehicle.

BX1757
2022-2024 Chevy Silverado 1500 ZR2
(Includes Adaptive Cruise Control, EcoBoost, & Bottom Shutters)
Installation Instructions



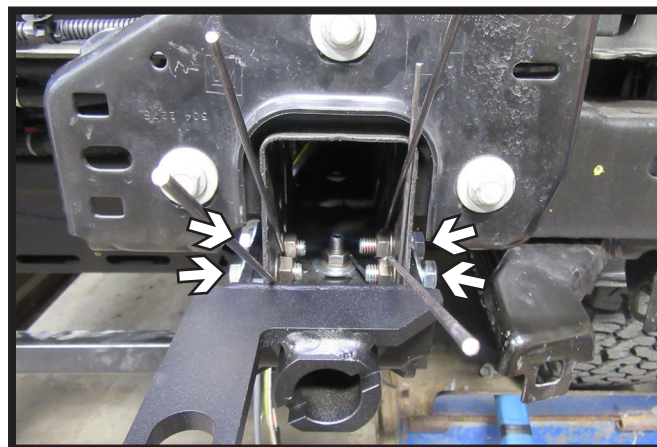
15. Rotate baseplate upward and install 1/2" bolt with lock washer, washer, and whiz nut into bottom hole on the baseplate. Do this on both sides of the vehicle.

**** Use Loctite® Red on all bolt threads and tighten all bolts to the appropriate torque. ****



16. Using a 1/2" drill bit, drill out the back outside hole using the baseplate as a template. Do this on both sides of the vehicle.

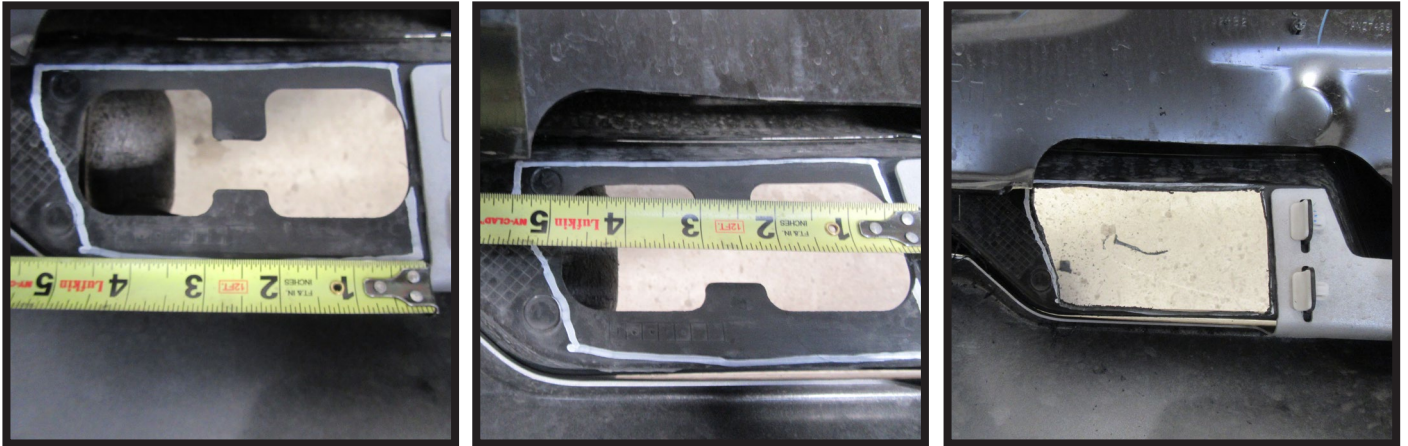
Note: Ream out the rest of the side holes with 1/2" drill bit as needed.



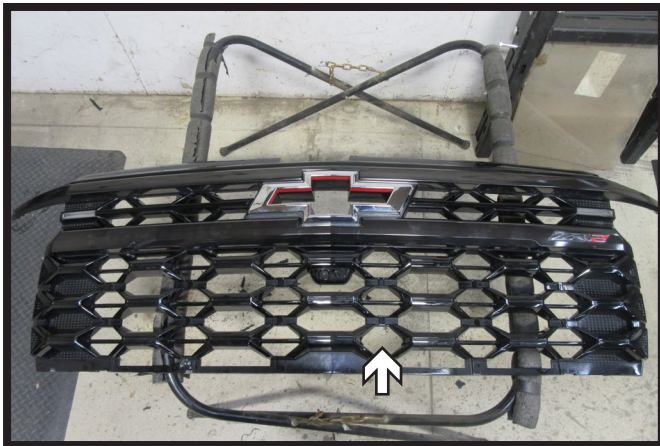
17. Install four (4) 1/2" x 1-1/2" bolts with washers, lock washers, and whiz nuts. Tighten. Then tighten bottom two (2) bolts on bracket below tow hook housing. Do this on both sides of the vehicle.

**** Use Loctite® Red on all bolt threads and tighten all bolts to the appropriate torque. ****

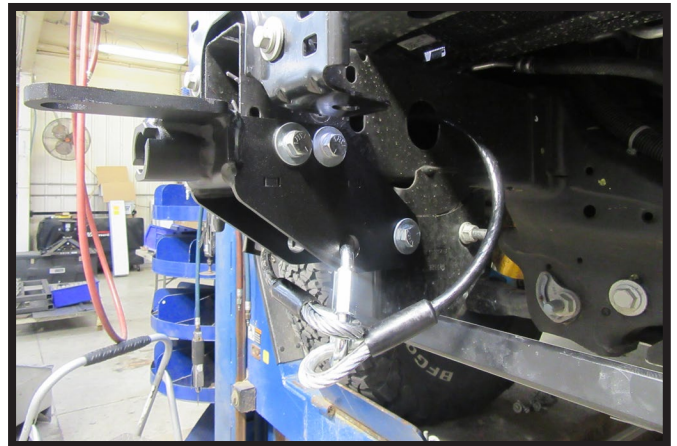
BX1757
2022-2024 Chevy Silverado 1500 ZR2
(Includes Adaptive Cruise Control, EcoBoost, & Bottom Shutters)
Installation Instructions



18. Using a reciprocating saw, trim the back of the bumper around each tow hook opening as shown to allow clearance for the baseplate.

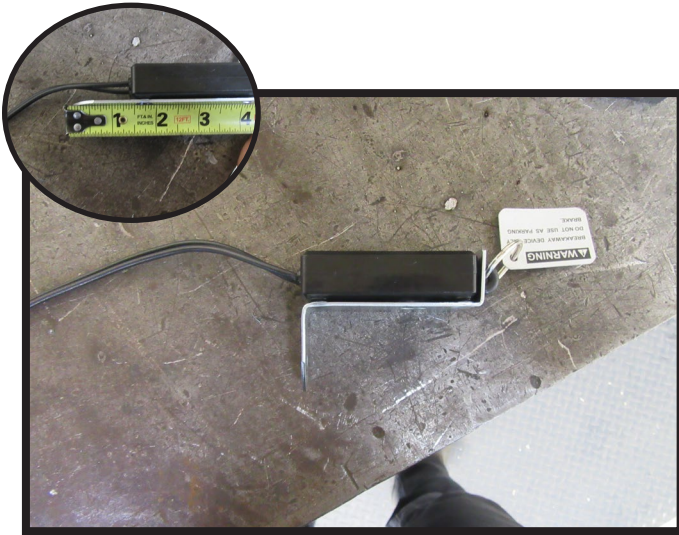


19. Using a reciprocating saw, cut the bottom right of center rib on the grille to allow clearance for the electrical rods.

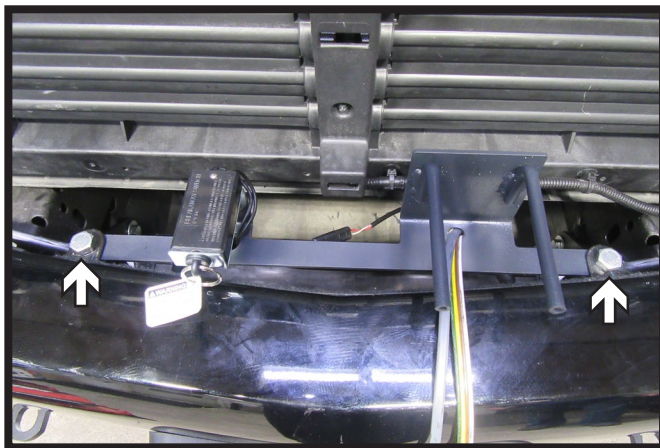


20. Attach the permanent baseplate safety cables to the provided convenience link on the baseplate. The photo above shows the recommended installation of the cables to frame of vehicle. Additional options may interfere with suggested mounting; in this case, secure the cables to a solid piece of the frame as described in the General Information sheet. Be sure the safety cables do not rub against any hoses or moving parts. Do this on **BOTH** sides of the vehicle.

BX1757
2022-2024 Chevy Silverado 1500 ZR2
(Includes Adaptive Cruise Control, EcoBoost, & Bottom Shuttters)
Installation Instructions



21. **Optional Breakaway:** Put a 90° bend in the breakaway bracket, 1-1/2" from the back and attach to the back of the electrical mounting bracket with provided 1/4" bolt and nut as shown. Feed electrical cable through hole in bottom of the mounting bracket.



22. Reinstall bumper and wire loom at the bottom of the shutter housing. Attach electrical mounting bracket to the vehicle using two (2) 1/2" x 1" bolts with nylon lock nuts. Feed tail light electrical cables through hole below electrical rods on the mounting bracket.

Note: May need to bend electrical rods slightly together to reinstall grille.



23. Reinstall the skid plate, grille, and fascia cover. Reconnect all electrical connections and hoses.

Note: If electrical rods were bent slightly together to reinstall grille, may need to bend them back to install electrical plug.

BX1757
2022-2024 Chevy Silverado 1500 ZR2
(Includes Adaptive Cruise Control, EcoBoost, & Bottom Shutters)
Installation Instructions

CUSTOMER SERVICE COMMITMENT

Blue Ox® is committed to providing you with exceptional customer care throughout your lifetime with our products. Our team is here to assist you with any questions you may have regarding the performance of your product. Simply call (402) 385-3051 and you can speak with our customer service team.

Additionally, please visit our website to see which rallies our team will be attending. For a nominal fee, our service technician will service your towing system to ensure it's in proper working condition. Also, as a commitment to our customers, should you visit our factory, you can stay at our full service Blue Ox® campground at no charge along with enjoying a factory tour.

Again, thank you for being our customer and for the confidence you have shown in the performance of our products. It is because of customers like you we enjoy the success we have today.



© 2023 Blue Ox
One Mill Road, Industrial Park
Pender, Nebraska 68047
Phone: (402) 385-3051
Fax: (402) 385-3360
www.blueox.com

General Information

1. Ensure that your product(s) are registered online at www.blueox.com. It is crucial to register your product(s) so that you may be alerted of product offerings, updates, upgrades, maintenance and safety bulletins, and/or recalls.
2. **It is the owner's responsibility to inspect all towing equipment for cracked welds, missing or worn parts and loose bolts before each towing trip.** Be sure to use Loctite® Red on all bolts and tighten to the recommended specifications.
3. **It is the owner's responsibility to hook up all towing equipment per manufacturer's instructions/recommendations.**
4. Remove the attachment tabs when not in use (if applicable).

Notice To Baseplate Installer

1. It is YOUR responsibility to watch for:

- Oil cooler and air conditioner lines
- Electrical wires and hoses
- Missing parts or attaching points on the frame

** If the baseplate is improperly installed and is against a wire or hose, it could cause fluid leaks or electrical shorts some time after the actual baseplate installation.

Permanent Baseplate Safety Cable Installation

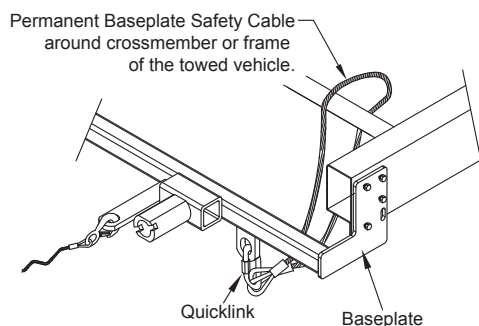
Permanent baseplate safety cables are strongly recommended when towing a vehicle with a tow bar. The principle function of the permanent baseplate safety cables is to prevent the towed vehicle from breaking loose in the event the connection between the frame of the towed vehicle and the baseplate fails or becomes disconnected. The cables must be connected from the baseplate to the frame rail or cross member of the vehicle's frame. The illustrations below show the possible arrangements recommended by Blue Ox®. Each permanent baseplate safety cable must have an adequate weight rating for the towing system. The weight rating of the two (2) cables together will not qualify.

Do not mount the permanent baseplate safety cables against wires, hoses or brake lines.

These permanent baseplate safety cables should remain installed as long as the baseplate is installed on the vehicle. Permanent baseplate safety cables are to be used in conjunction with, and NOT a replacement for legally required safety cables attaching the towed vehicle to the towing vehicle.

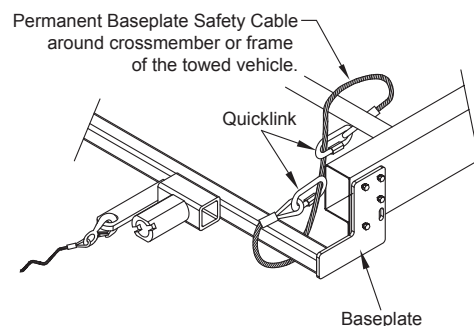
Option #1

(Baseplates with Convenience Link Tabs)



Option #2

(Baseplates with out Convenience Link Tabs)



BLUE OX ORIGINAL PURCHASERS THREE YEAR LIMITED WARRANTY

Automatic Equipment Manufacturing Company ("Automatic") warrants to the original (first) retail purchaser that this product, manufactured by Automatic, shall be free from defect in material and workmanship under normal use and service for a period of three years from the date of delivery.

During said three-year period, Automatic will repair or replace any parts that have been returned by the original purchaser, to the factory, transportation prepaid, and in Automatic's sole and absolute opinion found to be defective.

Limitations on Warranty Coverage:

Coverage under this warranty will be valid only if the customer warranty card is returned by the original purchaser within 30 days of purchase.

Coverage under this warranty will be effective only when a copy of the original invoice, showing date and place of purchase, accompanies any claim for warranty. This warranty is NON TRANSFERABLE.

This limited warranty will not cover, in any way or form, any alleged damages caused by incorrect or improper installation, improper use, modification or neglect of product, failure to properly service and maintain, misuse, act of God, accident or failure of the user to follow guidelines contained in the instructional material provided by Automatic.

This warranty does not cover normal wear and tear, paint or rust.

Warrantor assumes no responsibility to the owner for loss of use of product, loss of time, inconvenience or any other damage consequential or otherwise. Including, but not limited to mileage, expense of transporting of product, return shipping expense, mechanics travel time, telephone, road service, towing, and rental during repairs, travel, lodging, loss or damage to personal property or loss of earnings.

REPAIR OR REPLACEMENT AS SET FORTH IN THIS LIMITED WARRANTY IS THE SOLE EXCLUSIVE REMEDY OF THE PURCHASER. AUTOMATIC SHALL NOT BE LIABLE FOR ANY INCIDENTAL OR CONSEQUENTIAL DAMAGES FOR BREACH OF ANY EXPRESS OR IMPLIED WARRANTY ON THIS PRODUCT. EXCEPT TO THE EXTENT PROHIBITED BY APPLICABLE LAW, ANY IMPLIED WARRANTY OF MERCHANTABILITY OR FITNESS FOR A PARTICULAR PURPOSE ON THIS PRODUCT IS LIMITED IN LENGTH TO THE DURATION OF THIS WARRANTY.

Please visit <http://blueox.com/warranty/> to register your warranty



BLUE OX