



Strong As An Ox™

BX1829 Installation Instructions
2002 Nissan Altima
2004 Nissan Maxima 3/5SL

Serial No.

The front fascia and tie down brackets are removed for baseplate installation. Tie down brackets will not be reinstalled. No drilling necessary. The BX8869 is available for the vehicle. Attachment Tabs are 22 inches center to center and a height of 15 5/8 inches.



1. Remove two phillips screws from under fascia corner, just forward of front tire, both sides.



2. Remove five push pins from bottom of fascia.



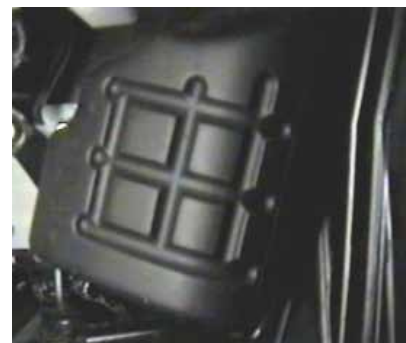
3. Just forward of front tires, inside fender, on fascia corner are two metric bolts to remove with the 10MM Socket, both sides.



4. Remove six push pins from the top side of fascia, pull fascia forward, and set aside.



5. Using the 10MM socket, remove the three metric bolts from the windshield washer reservoir, unplug electrical, plug water lines in reservoir or drain tank, and set aside.



6. Remove two metric bolts from air intake damper on driver's side with 10MM socket and set aside.



Strong As An Ox™



7. Using the 14MM socket, remove the three metric bolts from tie down bracket, both sides, and set aside. Tie down brackets will not be reinstalled. Remove temperature sensor from the bottom of metal bumper and tie up out of the way.



9. Hold baseplate to align with existing tie down bracket holes. Fasten items 4 and 5, both sides, and tighten. On driver's side, reinstall air intake damper with existing back bolt and item 3 for the front bolt (use existing bushing with item 3) **Be sure and use loctite on all bolts before tightening.**

11. Reinstall the temperature sensor, bolts in step 7, and fascia.

12. The dimensional variations between otherwise identical cars can be considerable. While the location and size of the holes in the baseplate were designed to allow for easy installation, it may be necessary to file a hole slightly to allow a bolt to clear.

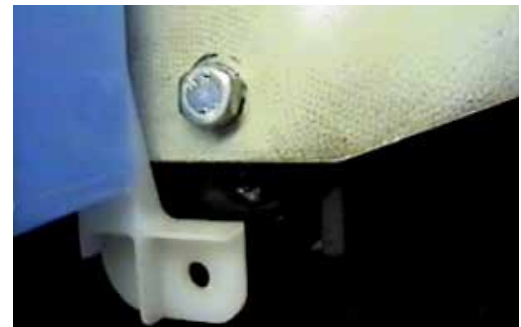
13. Install the tow bar and safety cables according to the instructions included in their packages.

14. Do **not** substitute other devices if the tow bar pin and clip are lost.

15. **DEALER OR INSTALLER: BE CERTAIN THE USER RECEIVES THE INSTRUCTION SHEET.**



8. Cut webbing just below bolt, on frame end, with the hack saw and bend webbing forward to relieve area for baseplate, as shown in photo. Remove metric bolt with the 10MM socket, both sides, and replace after baseplate is installed.



10. Reinstall windshield washer reservoir. Reconnect hoses and electrical plugs. Install items 2, 6, 7, and 8, that will replace the lower front bolt and support. **Be sure and use loctite on all bolts before tightening.**



Tools Required

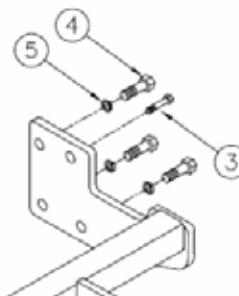
10MM Socket
12MM Socket
14MM Socket

Loctite Blue
17MM Socket
Phillips Screw Driver

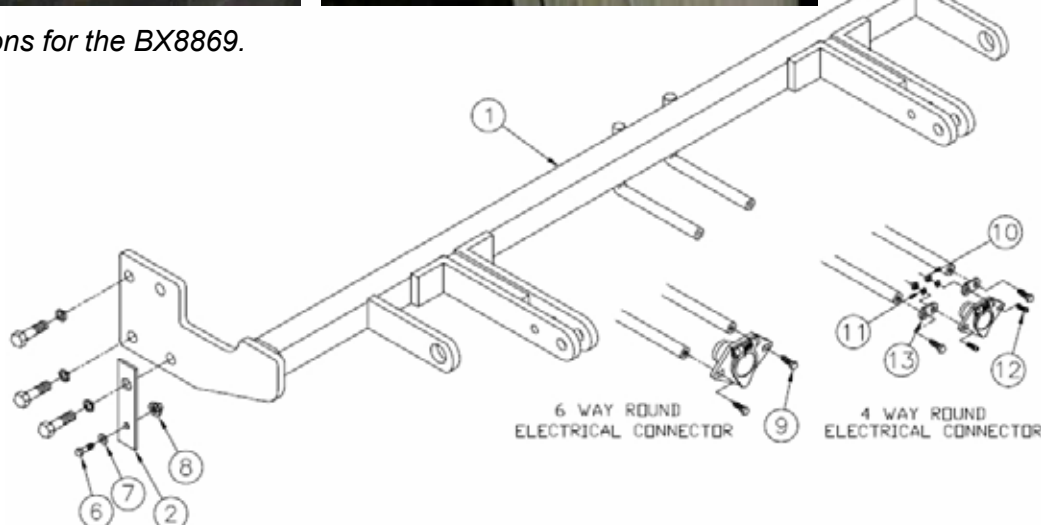
Utility Knife
Vise Grips
Hack Saw

Parts List

Ref. No.	Qty.	Part No.	Description
1	1	61-5775	Weldment, Base Plate, BX1829
2	1	102-6267	Flat, 1/8 X 1 X 4 1/8
3	1	201-0702	6MM-1.00 x 45MM, Hex Bolt, Grd. 8.8, ZP
4	6	201-0423	10MM-1.25 x 35MM, Hex Bolt, Grd. 8.8, ZP
5	6	203-0104	10MM Lock Washer, ZP
6	1	201-0071	1/4-20 x1 Bolt, Grd. 5, ZP
7	1	203-0001	1/4 Flat Washer, ZP
8	1	202-0069	Hex Nut, Whiz Loc, ZP
9	2	201-0979	#12-14 X 1" Self Drilling Screw, ZP
10	2	201-0192	#10-32 x 1/2 Slot, Rd. Hd. Screw
11	2	203-0054	#10 Lock Washer
12	2	202-0047	#10-32 Hex Nut
13	2	101-5822	Adapter, 4 Way Connector



Locations for the BX8869.



IMPORTANT: Use only genuine factory replacement parts on your Base Plate. Do not substitute homemade or nontypical parts. If a bolt is lost or in need of replacement, for your safety and the preservation of your Base Plate, be sure to use a replacement bolt of the same grade (Usually Grade 5, refer to parts list). Repair parts may be ordered through your nearest **Blue Ox** dealer or distributor.

General Information

1. Ensure that your product(s) are registered online at www.blueox.com. It is crucial to register your product(s) so that you may be alerted of product offerings, updates, upgrades, maintenance and safety bulletins, and/or recalls.
2. **It is the owner's responsibility to inspect all towing equipment for cracked welds, missing or worn parts and loose bolts before each towing trip.** Be sure to use Loctite® Red on all bolts and tighten to the recommended specifications.
3. **It is the owner's responsibility to hook up all towing equipment per manufacturer's instructions/recommendations.**
4. Remove the attachment tabs when not in use (if applicable).

Notice To Baseplate Installer

1. It is YOUR responsibility to watch for:

- Oil cooler and air conditioner lines
- Electrical wires and hoses
- Missing parts or attaching points on the frame

** If the baseplate is improperly installed and is against a wire or hose, it could cause fluid leaks or electrical shorts some time after the actual baseplate installation.

Permanent Baseplate Safety Cable Installation

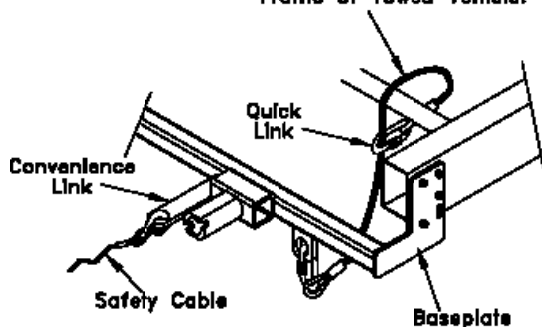
Permanent baseplate safety cables are strongly recommended when towing a vehicle with a tow bar. The principle function of the permanent baseplate safety cables is to prevent the towed vehicle from breaking loose in the event the connection between the frame of the towed vehicle and the baseplate fails or becomes disconnected. The cables must be connected from the baseplate to the frame rail or cross member of the vehicle's frame. The illustrations below show the possible arrangements recommended by Blue Ox®. Each permanent baseplate safety cable must have an adequate weight rating for the towing system. The weight rating of the two (2) cables together will not qualify.

Do not mount the permanent baseplate safety cables against wires, hoses or brake lines.

These permanent baseplate safety cables should remain installed as long as the baseplate is installed on the vehicle. Permanent baseplate safety cables are to be used in conjunction with, and NOT a replacement for legally required safety cables attaching the towed vehicle to the towing vehicle.

OPTION #1

Permanent Baseplate Safety Cables to Cross Member or Frame of Towed Vehicle.



OPTION #2

Permanent Baseplate Safety Cables to Cross Member or Frame of Towed Vehicle.

