

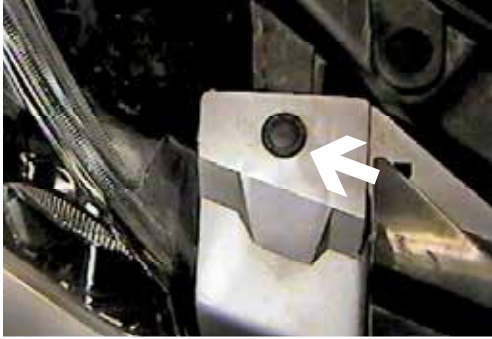


Strong As An Ox™

BX1832 Installation Instructions 2004-09 Nissan Quest

Serial No.

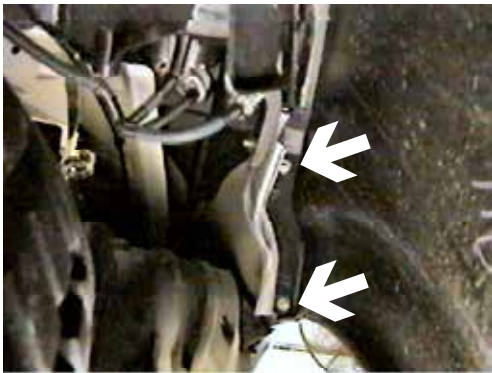
The front fascia, air baffle, windshield washer reservoir and tie down brackets are removed for baseplate installation. Tie down brackets will not be reinstalled. No drilling required. Trimming of back side of fascia is required. The BX8869 is available for the vehicle. Attachment Tabs are 24 inches center to center and a height of 15 inches.



1. Remove one push pin from top edge of fascia, both sides.



2. Pull the top edge of grill forward, just to the left of hood latch and remove push pin.



3. Just forward of front tire, inside wheel well, are two metric bolts to remove with the 10MM socket, both sides.



4. Forward of front tires, on lower edge of fascia, are three Phillips head screws to remove with the Phillips screw driver, both sides.



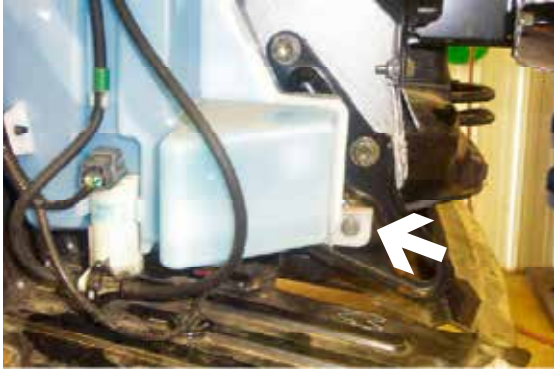
5. Remove the six push pins from the lower, middle edge of fascia, pull fascia forward and set aside.



6. Remove metric bolt from air baffle, just above tie down bracket on driver's side and metric bolt between back side of baffle and wheel well cover with the 10MM socket.



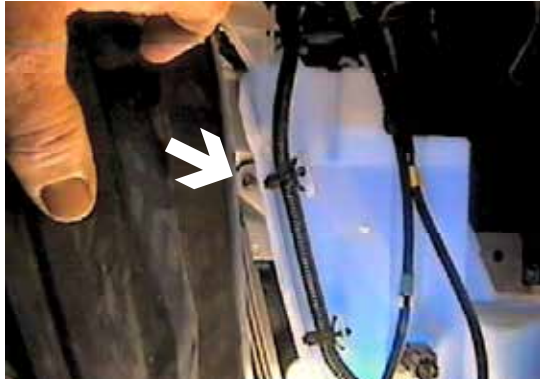
Strong As An Ox™



7. Using the 10MM socket, remove metric bolt from front washer reservoir on the passenger's side with the 10MM socket.



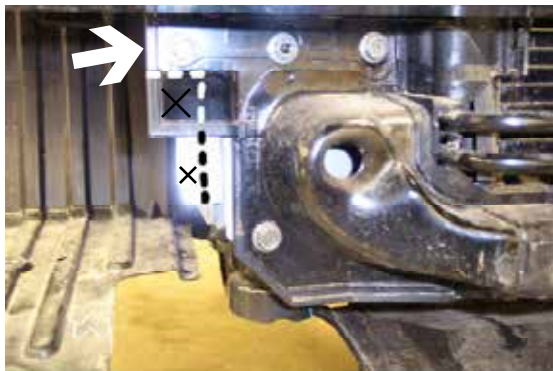
8. Remove one metric bolt from washer reservoir's upper bracket using the 10MM socket.



9. Remove metric bolt from between wheel well and washer reservoir using the 10MM socket, pull reservoir down, unplug electrical connections, disconnect and plug water lines, set aside.



10. Remove the tie down bracket with the 14MM socket, both sides. **Tie down brackets will not be reinstalled.**



11. Mark webbing forward of tie down bracket area just below upper bolt (white arrow, left photo) and down flush with outside edge of frame with the reciprocating saw, both sides.





12. Align baseplate with existing bolt locations for the tie down brackets and forward bolt location for air baffle on driver's side, install 10MM-1.25 x 35MM hex bolt and lock washer with the 17MM socket. Install 10MM-1.25 x 35MM hex bolt and lock washer with the 17MM socket on passenger's side and 1" x 4" flat on front bolt location for washer reservoir, as shown in photo of step 14. **Be sure to use loctite on all bolts before tightening. Tighten all bolts according to Torque Chart in General Instruction sheet.**

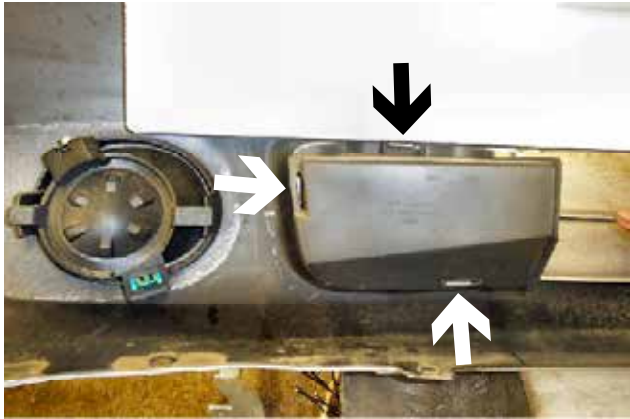
13. Install air baffle on driver's side using the 6MM-1.0 x 45MM hex bolt on front bolt location through baseplate and existing bolt between baffle and wheel well.



14. Install washer reservoir with existing bolts on the two back bolt locations and the 1/4-20 x 1" hex bolt, flat washer and whiz nut for the forward bolt location to lower hole of 1" x 4" flat. Reinstall all fluid and electrical connection on washer reservoir to their proper locations. **Be sure and use loctite on all bolts before tightening.**



Strong As An Ox™



15. Set fascia face down on a soft surface, release the three clips on grill cap and remove cap, both sides. Grill caps will not be reinstalled.



16. Cut and remove clip tab at the end of grill opening on both ends, flush with the back edge of grill's main body. Reinstall fascia.

17. The dimensional variations between otherwise identical cars can be considerable. While the location and size of the holes in the baseplate were designed to allow for easy installation, it may be necessary to file a hole slightly to allow a bolt to clear.

18. Install the tow bar and safety cables according to the instructions included in their packages.

19. Do **not** substitute other devices if the tow bar pin and clip are lost.

20. DEALER OR INSTALLER: BE CERTAIN THE USER RECEIVES THE INSTRUCTION SHEET.



Location for the Bx8869 on driver's side tail light assembly.



Strong As An Ox™

Tools Required

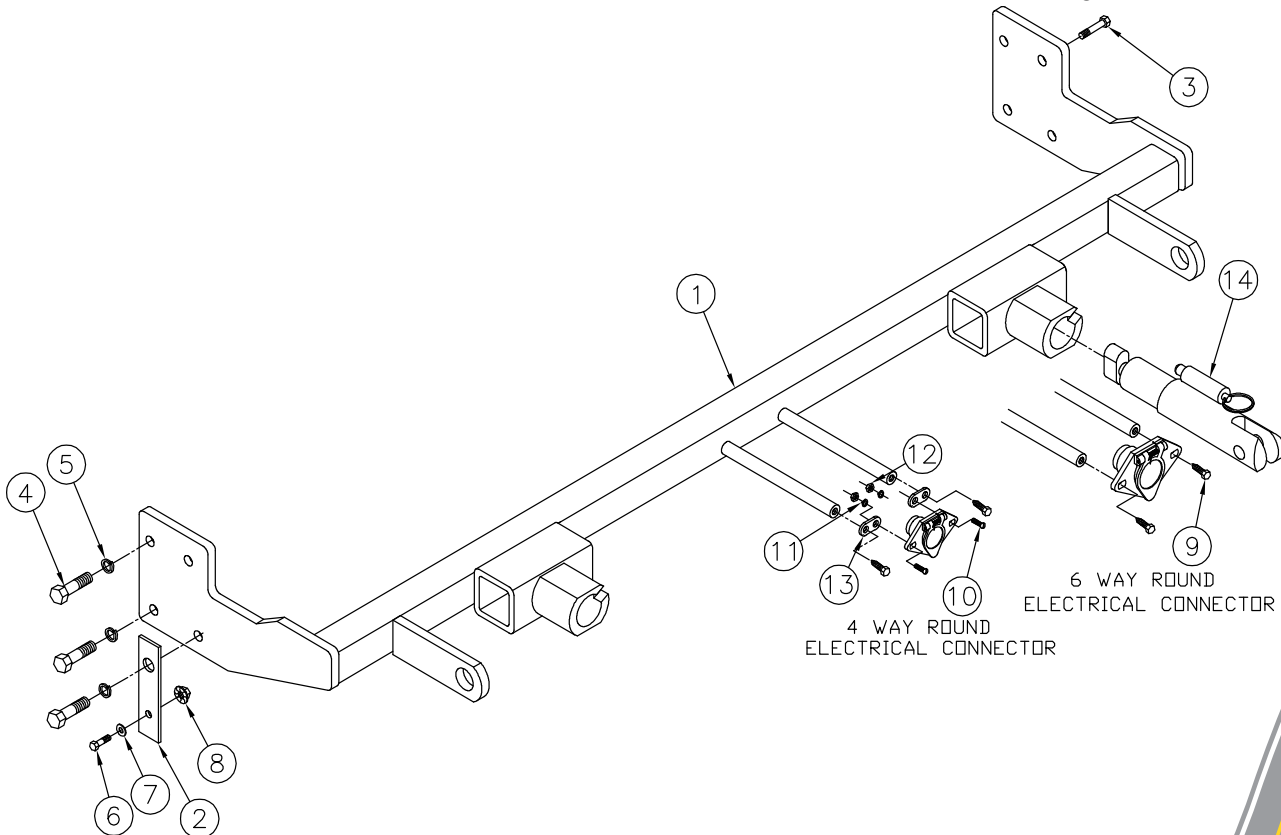
10MM Socket
17MM Socket
Utility Knife

12MM Socket
Phillips Screw Driver
Loctite

14MM Socket
Vise Grips

Parts List

Ref. No.	Qty.	Part No.	Description
1	1	61-6029	Weldment, Base Plate, BX1832
2	1	102-6267	Flat, 1/8 X 1 X 4 1/8
3	1	201-0702	6MM-1.00 x 45MM, Hex Bolt, Grd. 8.8, ZP
4	6	201-0423	10MM-1.25 x 35MM, Hex Bolt, Grd. 8.8, ZP
5	6	203-0104	10MM Lock Washer, ZP
6	1	201-0071	1/4-20 x1 Bolt, Grd. 5, ZP
7	1	203-0001	1/4 Flat Washer, ZP
8	1	202-0069	Hex Nut, Whiz Loc, ZP
9	2	201-0979	#12-14 X 1" Self Drilling Screw, ZP
10	2	201-0192	#10-32 x 1/2 Slot, Rd. Hd. Screw
11	2	203-0054	#10 Lock Washer
12	2	202-0047	#10-32 Hex Nut
13	2	101-5822	Adapter, 4 Way Connector
14	2	62-3468	Attachment Assembly, SF/SB (R)
	2	226-0046	Baseplate Safety Cable, 36" CL III (Not Shown)
	2	229-0359	Quicklink, 3/8, ZP (Not Shown)
	2	290-0437	Receiver, Cap Plug (BLK) (Not Shown)



IMPORTANT: Use only genuine factory replacement parts on your Base Plate. Do not substitute homemade or nontypical parts. If a bolt is lost or in need of replacement, for your safety and the preservation of your Base Plate, be sure to use a replacement bolt of the same grade (Usually Grade 5, refer to parts list). Repair parts may be ordered through your nearest **Blue Ox** dealer or distributor.

© 2004, 06, 10 Blue Ox Division, Automatic Equipment Mfg. Co. • One Mill Road, Industrial Park • Pender, Nebraska 68047 • Phone 402-385-3051 • Fax 402-385-3360 • www.blueox.com

General Information

1. Ensure that your product(s) are registered online at www.blueox.com. It is crucial to register your product(s) so that you may be alerted of product offerings, updates, upgrades, maintenance and safety bulletins, and/or recalls.
2. **It is the owner's responsibility to inspect all towing equipment for cracked welds, missing or worn parts and loose bolts before each towing trip.** Be sure to use Loctite® Red on all bolts and tighten to the recommended specifications.
3. **It is the owner's responsibility to hook up all towing equipment per manufacturer's instructions/recommendations.**
4. Remove the attachment tabs when not in use (if applicable).

Notice To Baseplate Installer

1. It is YOUR responsibility to watch for:

- Oil cooler and air conditioner lines
- Electrical wires and hoses
- Missing parts or attaching points on the frame

** If the baseplate is improperly installed and is against a wire or hose, it could cause fluid leaks or electrical shorts some time after the actual baseplate installation.

Permanent Baseplate Safety Cable Installation

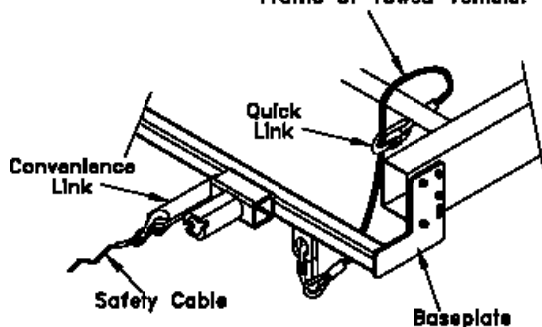
Permanent baseplate safety cables are strongly recommended when towing a vehicle with a tow bar. The principle function of the permanent baseplate safety cables is to prevent the towed vehicle from breaking loose in the event the connection between the frame of the towed vehicle and the baseplate fails or becomes disconnected. The cables must be connected from the baseplate to the frame rail or cross member of the vehicle's frame. The illustrations below show the possible arrangements recommended by Blue Ox®. Each permanent baseplate safety cable must have an adequate weight rating for the towing system. The weight rating of the two (2) cables together will not qualify.

Do not mount the permanent baseplate safety cables against wires, hoses or brake lines.

These permanent baseplate safety cables should remain installed as long as the baseplate is installed on the vehicle. Permanent baseplate safety cables are to be used in conjunction with, and NOT a replacement for legally required safety cables attaching the towed vehicle to the towing vehicle.

OPTION #1

Permanent Baseplate Safety Cables to Cross Member or Frame of Towed Vehicle.



OPTION #2

Permanent Baseplate Safety Cables to Cross Member or Frame of Towed Vehicle.

