



BX2136 Installation Instructions 1998-99 Ford Ranger 4WD

Serial No.

These vehicles weigh over 3500 lbs. and require a Class III (5000 lb) rated tow bar, hitch, and accessories. Utilization of Blue Ox baseplates with any tow bar not approved by Automatic Equipment Mfg. Company invalidates the limited warranty.

1. Read the General Instruction Sheet included with this baseplate.
2. The baseplate mounts to the frame using six bolts which are included with the baseplate.
3. The bumper will have to be removed. There is a rectangular shaped belly pan that needs to be removed to gain easy access to the bumper bolts. Four small bolts mount it to the frame.
4. One of the tow hooks needs to be removed to allow the bumper to be removed. There are three bolts which mount the tow hook. With the bolts out, the tow hook can be removed out the back of the bumper.
5. There are four nuts that hold the bumper on the end of the frame rails. Remove the bolts and set the bumper aside.
6. The baseplate fits on the inside and bottom of the frame rails near the front of the frame. There are slots in the frame that will match up to the slots in the end pieces of the baseplate. Hold the baseplate up in position and then mark the location of the two round holes in the bottom of the end pieces. Remove the baseplate and drill 17/32" holes in these locations.
7. Position the baseplate on the frame again and start the bolts. The four nut plates supplied are to be used on the bolts going into the slotted holes and the nut wires for the two drilled holes. Use the flat washers to cover the slots and apply Loctite to all bolts. When all bolts are started, tighten completely.
8. Replace the bumper, tow hook, and belly pan.
9. The dimensional variations between otherwise identical cars can be considerable. While the location and size of the holes in the baseplate were designed to allow for easy installation, it may be necessary to file a hole slightly to allow a bolt to clear.
10. Install the tow bar and safety cables according to the instructions included in their packages.
11. Do not substitute other devices if the tow bar pin and clip are lost.
12. DEALER OR INSTALLER: BE CERTAIN THE USER RECEIVES THE INSTRUCTION SHEET.



Strong As An Ox™

Tools Required

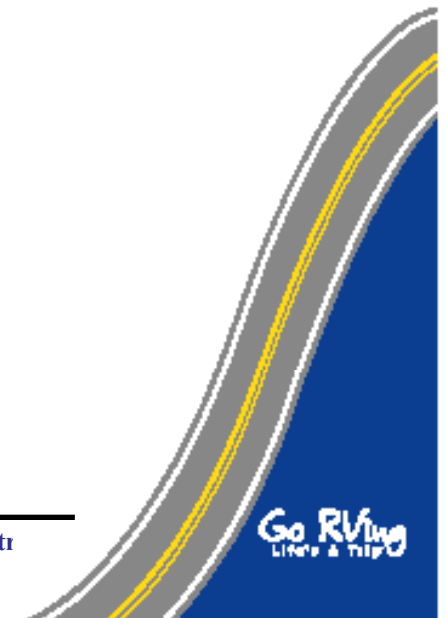
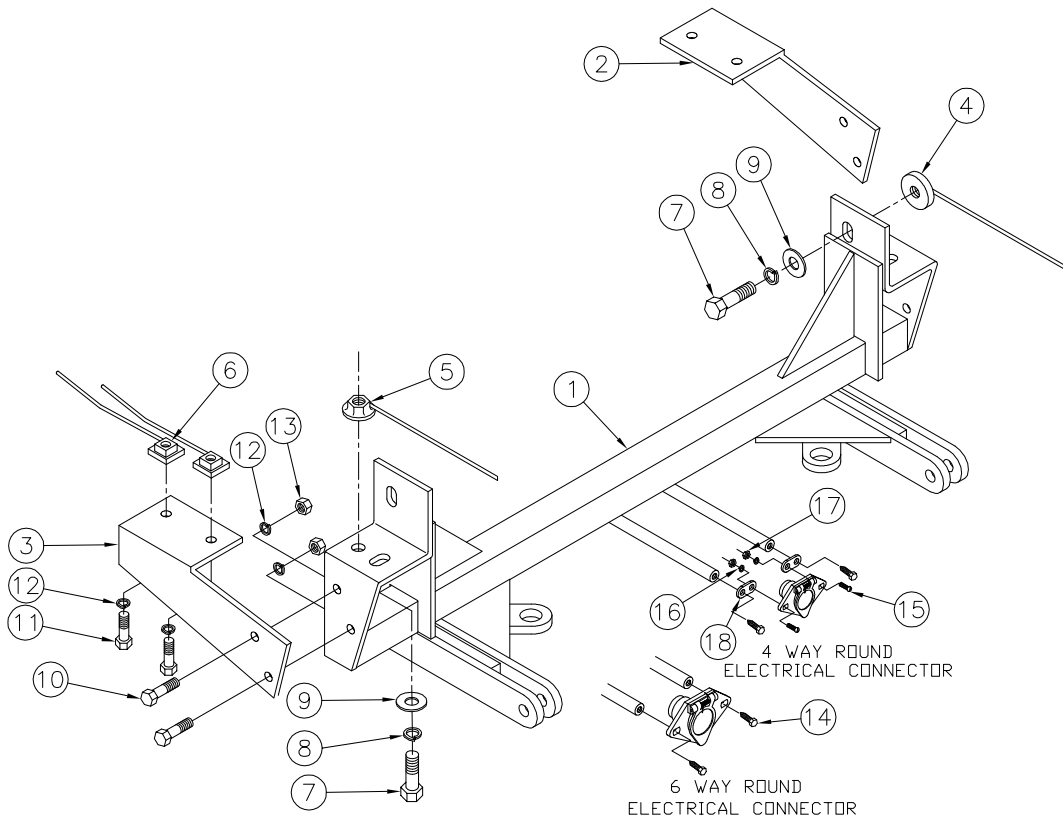
3/4" Socket
10MM Socket

18MM Socket
17/32" Drill Bit

15MM Socket
Loctite

Parts List

Ref. No.	Qty.	Part No.	Description
1	1	61-5158	WLDM'T, BP, BX2136
2	1	101-6609	PLATE, SUPPORT, DS, BX2170
3	1	101-6610	PLATE, SUPPORT, PS, BX2170
4	2	61-5159	WELDMENT, 1/2 NUT PLATE WITH WIRE
5	4	61-4029	WELDMENT, 1/2 NUT WIRE COMMON
6	4	61-5208	WLD, NUT PLT, 1/4X1X1, 3/8"/14"WIRE
7	6	201-0051	1/2-13 X 1 1/2 HEX BOLT GRD.5, ZP
8	6	203-0012	1/2 LOCK WASHER, ZP
9	4	203-0005	1/2 FLAT WASHER, ZP
10	4	201-0368	3/8-16 X 1 1/4 HEX HEAD BOLT, GRD. 5
11	4	201-0440	3/8-16 X 1 1/2 HEX BOLT, GRD.5, ZP
12	8	203-0010	3/8 LOCK WASHER, ZP
13	4	202-0090	3/8-16 HEX NYL. INS. LOCK NUT, ZP
14	2	201-0979	#12-14 x 1" Self Drilling Screw, ZP
15	2	201-0192	10-32 X 1/2 SLOT, RD. HD. SCREW
16	2	203-0054	#10 LOCK WASHER
17	2	202-0047	#10-32 HEX NUT
18	2	101-5822	ADAPTER, 4 WAY CONNECTOR
	2	226-0046	BASEPLATE SAFETY CABLE, 36" CL III (Not Shown)
	4	229-0359	QUICKLINK, 3/8, ZP (Not Shown)



General Information

1. Ensure that your product(s) are registered online at www.blueox.com. It is crucial to register your product(s) so that you may be alerted of product offerings, updates, upgrades, maintenance and safety bulletins, and/or recalls.
2. **It is the owner's responsibility to inspect all towing equipment for cracked welds, missing or worn parts and loose bolts before each towing trip.** Be sure to use Loctite® Red on all bolts and tighten to the recommended specifications.
3. **It is the owner's responsibility to hook up all towing equipment per manufacturer's instructions/recommendations.**
4. Remove the attachment tabs when not in use (if applicable).

Notice To Baseplate Installer

1. It is YOUR responsibility to watch for:

- Oil cooler and air conditioner lines
- Electrical wires and hoses
- Missing parts or attaching points on the frame

** If the baseplate is improperly installed and is against a wire or hose, it could cause fluid leaks or electrical shorts some time after the actual baseplate installation.

Permanent Baseplate Safety Cable Installation

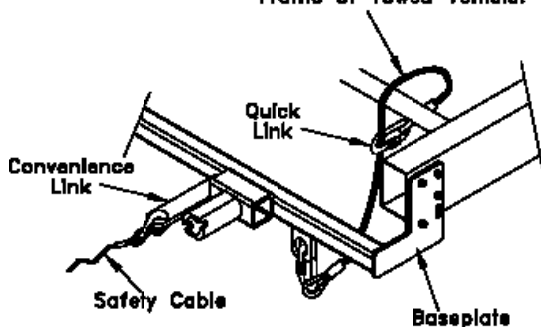
Permanent baseplate safety cables are strongly recommended when towing a vehicle with a tow bar. The principle function of the permanent baseplate safety cables is to prevent the towed vehicle from breaking loose in the event the connection between the frame of the towed vehicle and the baseplate fails or becomes disconnected. The cables must be connected from the baseplate to the frame rail or cross member of the vehicle's frame. The illustrations below show the possible arrangements recommended by Blue Ox®. Each permanent baseplate safety cable must have an adequate weight rating for the towing system. The weight rating of the two (2) cables together will not qualify.

Do not mount the permanent baseplate safety cables against wires, hoses or brake lines.

These permanent baseplate safety cables should remain installed as long as the baseplate is installed on the vehicle. Permanent baseplate safety cables are to be used in conjunction with, and NOT a replacement for legally required safety cables attaching the towed vehicle to the towing vehicle.

OPTION #1

Permanent Baseplate Safety Cables to Cross Member or Frame of Towed Vehicle.



OPTION #2

Permanent Baseplate Safety Cables to Cross Member or Frame of Towed Vehicle.

