

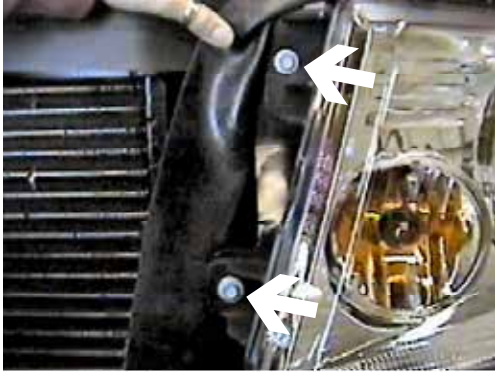


Strong As An Ox™

**BX2172 Installation Instructions
2004 Ford F-150 4 x 4 (Utility Truck)**

Serial No.

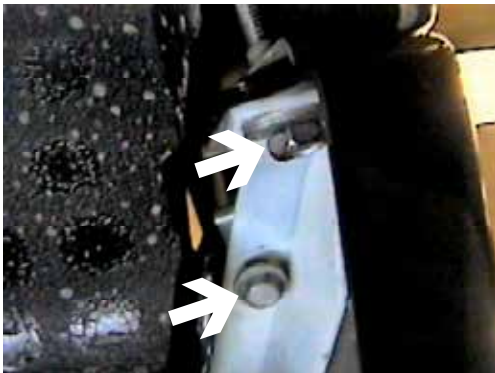
The headlight assembly, front fascia and metal bumper are removed for baseplate installation. Drilling is required. Trimming or removal of lower grille in metal bumper is required. The BX8869 is available for the vehicle. Attachment Tabs are 24 inches center to center and at height of 22 inches.



1. Using the 10MM socket, remove the three metric bolts from headlight assembly (two on the side and one on top), pull forward, unplug and set aside, both sides.



2. Just under headlight assembly is one metric bolt to remove with the 10MM socket, both sides.



3. Remove two metric bolts, just behind headlight assembly on fascia's upper corner with the 10MM socket, both sides



4. Remove the three metric bolts from the top edge of fascia with the 8MM socket. Remove one metric bolt from hood latch with the 10MM socket.



5. Using the 10MM socket, remove one metric bolt from hood support guide on both sides, set hood support guide aside. Remove upper fascia and set aside.





Strong As An Ox™



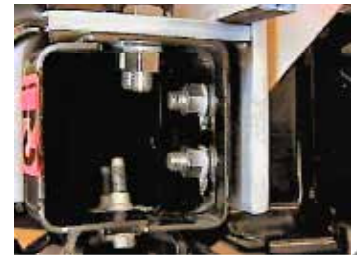
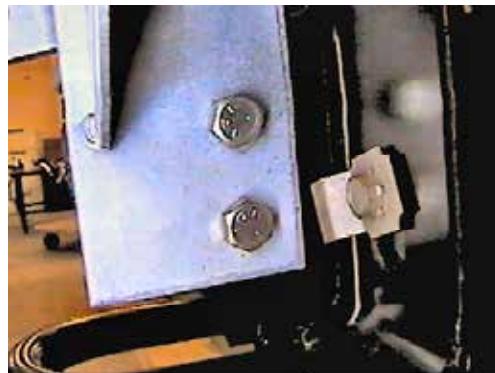
6. Using the 10MM socket, remove metric bolt from back side of metal bumper just outside of blinker assembly, both sides.



7. Remove two metric bolts from the back side of lower bumper using the 13MM socket. Pull metal bumper forward, disconnect all electrical connections and set metal bumper aside.



8. Slide baseplate on top of and between frame rails, align baseplate even with the front edge of frame rail on both sides and clamp in place with the vise grips.



View of frame end.

9. Using the baseplate as a template, drill the two top holes with the 17/32" drill bit, both sides. Insert the 1/2" x 1 1/2" hex bolts into drilled holes, tighten 1/2" lock washer and hex nut on the inside of frame (left photo). Using the baseplate as a template, drill the two side holes with the 17/32" drill bit, both sides. Insert the 1/2" x 1 1/2" hex bolts into drilled holes, tighten 1/2" lock washer and hex nut on the inside of frame (middle photo). **Be sure and use loctite on all bolts before tightening. Tighten all bolts according to the Torque Chart in the General Instruction sheet.**



Strong As An Ox™



10. Hold metal bumper to align with original position just forward of baseplate, mark back side of lower grille opening and trim area to allow attachment tabs and convenience links to come through grille (left photo).

Optional Grille Removal: To avoid trimming of lower grille, remove seven push pins from the back side of metal bumper (right photo).

11. Reinstall metal bumper, hood support guides, upper fascia, and headlight assemblies. Be sure all electrical connections are plugged in properly.

12. The dimensional variations between otherwise identical cars can be considerable. While the location and size of the holes in the baseplate were designed to allow for easy installation, it may be necessary to file a hole slightly to allow a bolt to clear.

13. Install the tow bar and safety cables according to the instructions included in their packages.

14. Do **not** substitute other devices if the tow bar pin and clip are lost.

15. DEALER OR INSTALLER: BE CERTAIN THE USER RECEIVES THE INSTRUCTION SHEET.



Location for the Bx8869 on driver's side tail light assembly.



Tools Required

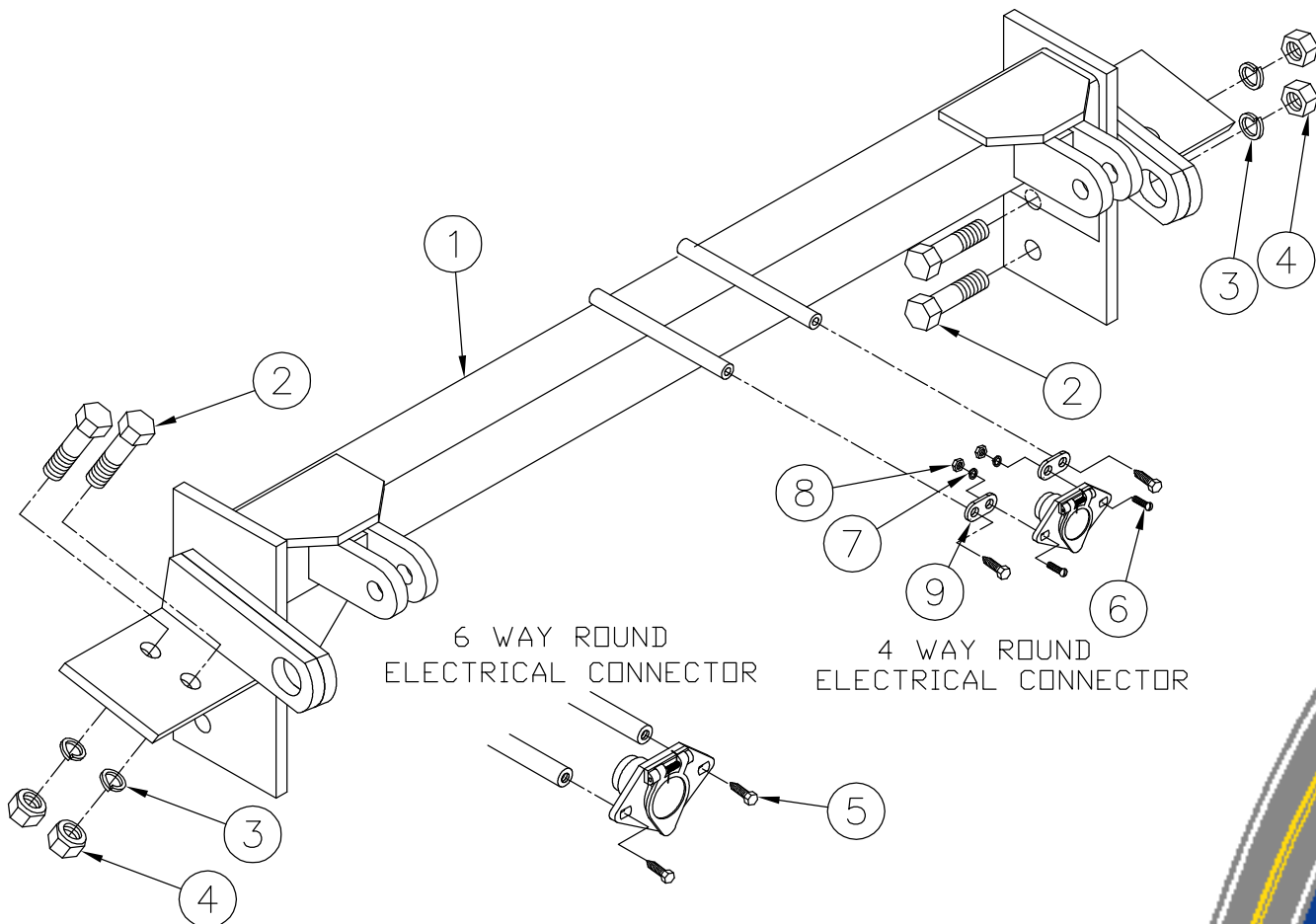
8MM Socket
3/4" Socket
Vise Grips

10MM Socket
Loctite
Utility Knife

13MM Socket
17/32" Drill Bit

Parts List

Ref. No.	Qty.	Part No.	Description
1	1	61-5993	Weldment, Base Plate, BX2172
2	8	201-0051	1/2-13 x 1 1/2 Bolt, Grd. 5, ZP
3	8	203-0012	1/2 Lock Washer, ZP
4	8	202-0005	1/2-13 Hex Nut, ZP
5	2	201-0979	#12-14 x 1" Self Drilling Screw, ZP
6	2	201-0192	#10-32 x 1/2 Slot, Rd. Hd. Screw
7	2	203-0054	#10 Lock Washer
8	2	202-0047	#10-32 Hex Nut
9	2	101-5822	Adapter, 4 Way Connector



IMPORTANT: Use only genuine factory replacement parts on your Base Plate. Do not substitute homemade or nontypical parts. If a bolt is lost or in need of replacement, for your safety and the preservation of your Base Plate, be sure to use a replacement bolt of the same grade (Usually Grade 5, refer to parts list). Repair parts may be ordered through your nearest **Blue Ox** dealer or distributor.

General Information

1. Ensure that your product(s) are registered online at www.blueox.com. It is crucial to register your product(s) so that you may be alerted of product offerings, updates, upgrades, maintenance and safety bulletins, and/or recalls.
2. **It is the owner's responsibility to inspect all towing equipment for cracked welds, missing or worn parts and loose bolts before each towing trip.** Be sure to use Loctite® Red on all bolts and tighten to the recommended specifications.
3. **It is the owner's responsibility to hook up all towing equipment per manufacturer's instructions/recommendations.**
4. Remove the attachment tabs when not in use (if applicable).

Notice To Baseplate Installer

1. It is YOUR responsibility to watch for:

- Oil cooler and air conditioner lines
- Electrical wires and hoses
- Missing parts or attaching points on the frame

** If the baseplate is improperly installed and is against a wire or hose, it could cause fluid leaks or electrical shorts some time after the actual baseplate installation.

Permanent Baseplate Safety Cable Installation

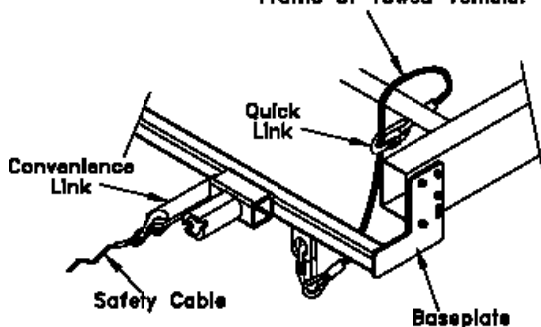
Permanent baseplate safety cables are strongly recommended when towing a vehicle with a tow bar. The principle function of the permanent baseplate safety cables is to prevent the towed vehicle from breaking loose in the event the connection between the frame of the towed vehicle and the baseplate fails or becomes disconnected. The cables must be connected from the baseplate to the frame rail or cross member of the vehicle's frame. The illustrations below show the possible arrangements recommended by Blue Ox®. Each permanent baseplate safety cable must have an adequate weight rating for the towing system. The weight rating of the two (2) cables together will not qualify.

Do not mount the permanent baseplate safety cables against wires, hoses or brake lines.

These permanent baseplate safety cables should remain installed as long as the baseplate is installed on the vehicle. Permanent baseplate safety cables are to be used in conjunction with, and NOT a replacement for legally required safety cables attaching the towed vehicle to the towing vehicle.

OPTION #1

Permanent Baseplate Safety Cables to Cross Member or Frame of Towed Vehicle.



OPTION #2

Permanent Baseplate Safety Cables to Cross Member or Frame of Towed Vehicle.

