



BLUE OX®
Baseplate Installation Instructions

BX2713 2008 Kia Spectra 5 Installation Instructions

Serial Number

Please read BOTH these Installation Instructions and the General Instructions before attempting to install or operate this equipment.

1. Blue Ox® towing products and accessories are intended to be installed by Blue Ox® Dealers who are familiar with our products and have the equipment necessary and knowledge to do "fit work". When necessary Blue Ox® Dealers can be found at www.blueox.us or by contacting our Customer Care Department at (402) 385-3051.
2. Many Blue Ox® Baseplates are designed to use existing holes and hardware to mount the baseplate to the towed vehicle. Even though bolts are there, do not assume they are adequate for baseplate mounting. Always use hardware supplied in the hardware kit and existing hardware specified in the Baseplate Installation Instructions.

Attachment Tab Height: 14 1/2"

Attachment Tab Width: 24"

Bolt Torque Specifications		
Torque in Foot-Pounds per Metric Bolts		
Bolt Size	Grade 8.8	Grade 10.9
6MM	6	8
8MM	16	22
10MM	31	40
12MM	54	70
14MM	89	117

Confirm the towability and pre-towing procedures for your vehicle with the owner's manual or contact the vehicle's manufacturer for specific towing procedures. You can also contact REMCO for additional information at 1(800)228-2481.

Bolt Torque Specifications		
Torque in Foot-Pounds per Inch Bolts		
Bolt Size	Grade 5	Grade 8
1/4"	10	14
5/16"	19	29
3/8"	33	47
7/16"	54	78
1/2"	78	119
5/8"	154	230



! WARNING

Failure to read and follow these instructions could result in separation of the towed vehicle from the tow bar, causing property damage, loss of towed vehicle, personal injury or death.

BX2713

2008 Kia Spectra 5

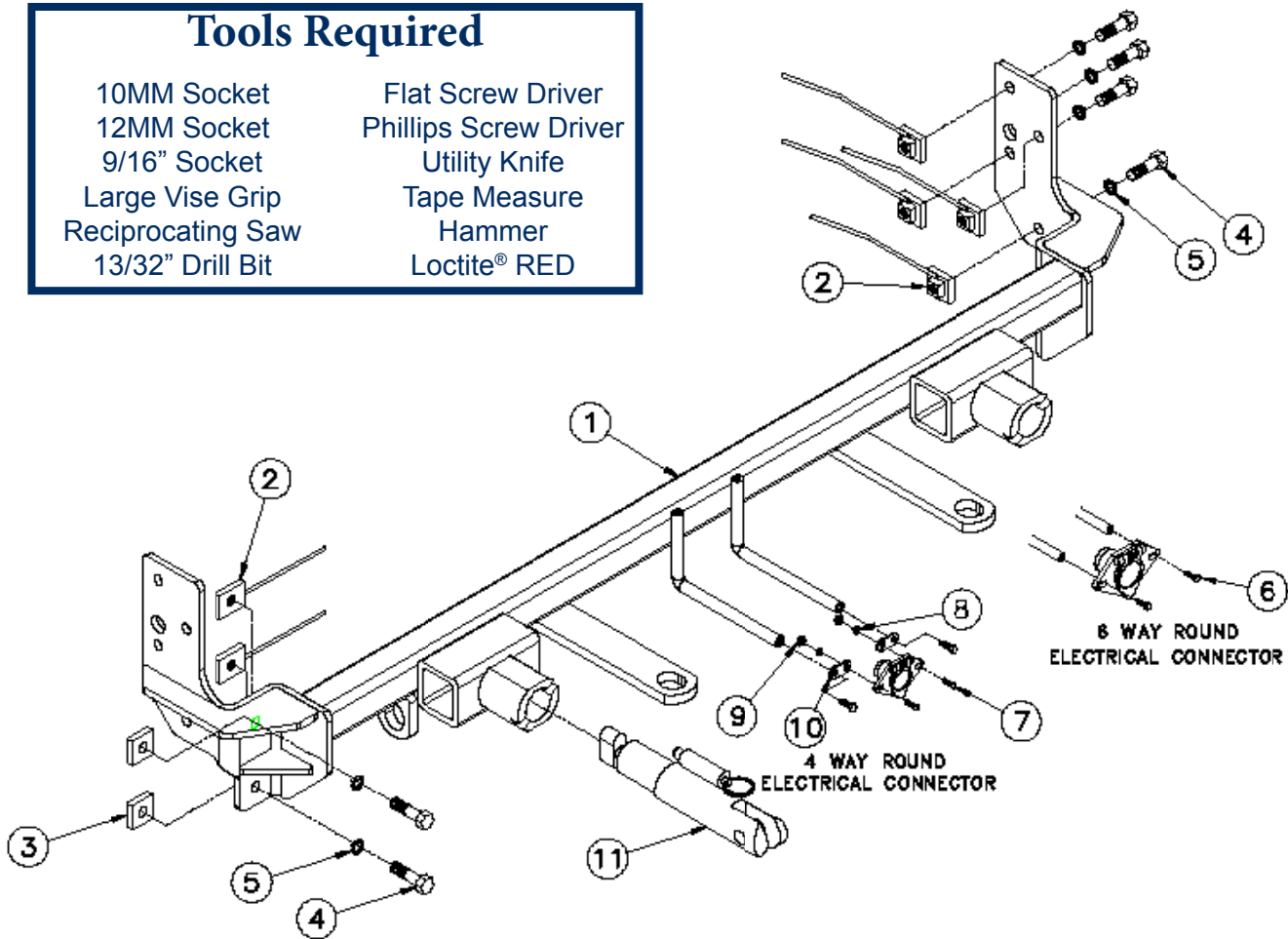
Installation Instructions

Parts List

Ref. No.	Qty.	Part #	Description
1	1	61-6598	WLDM'T, BP, BX2713
2	12	61-5208	WLD, NUT PLT, 1/4X1X1, 3/8"/14"WIRE
3	4	102-5484	NUT PLATE, 1/4 X 1 X 1"(.531)
4	12	201-0440	3/8-16 X 1 1/2 HEX BOLT, GRD.5, ZP
5	12	203-0010	3/8 LOCK WASHER, ZP
6	2	201-0979	#12-14 X 1" SELF DRILLING SCREW, ZP
7	2	201-0192	10-32 X 1/2 SLOT, RD. HD. SCREW
8	2	203-0054	#10 LOCK WASHER
9	2	202-0047	#10-32 HEX NUT
10	2	101-5822	ADAPTER, 4 WAY CONNECTOR
11	2	62-3468	ATT TAB ASSY, REM, SF/SB, 1 HOLE
	2	226-0046	BASEPLATE SAFETY CABLE, 36" CL III (Not Shown)
	2	229-0359	QUICKLINK, 3/8, ZP (Not Shown)
	2	290-0437	RECEIVER, CAP PLUG (BLK) (Not Shown)

Tools Required

10MM Socket	Flat Screw Driver
12MM Socket	Phillips Screw Driver
9/16" Socket	Utility Knife
Large Vise Grip	Tape Measure
Reciprocating Saw	Hammer
13/32" Drill Bit	Loctite® RED



Important:

Use only genuine factory replacement parts on your baseplate. Do **NOT** substitute homemade or non-typical parts. If a bolt is lost or in need of replacement, for your safety and the preservation of your baseplate, be sure to use a replacement bolt of the same grade (In most cases it will be Grade 5, please reference the parts list above). Replacement parts may be ordered through your nearest Blue Ox® Dealer or Distributor, or call our 24/7 Customer Care Team at (402)385-3051.

BX2713

2008 Kia Spectra 5

Installation Instructions

Attachment Tabs:

Due to the design of the removable tabs, the RangeFinder II tow bars can not be used. Adapters, except the BX8833 and BX88151, can not be used with this baseplate.

Instructions:

The plastic cover, fascia, headlights and bumper are removed and reinstalled for the baseplate installation. Drilling is required.

Trimming of the frame rail is required.

The dimensional variations between otherwise identical vehicles can be considerable.

While the baseplate was designed for easy installation, it may be necessary to tailor the baseplate slightly to compensate for auto manufacturer's tolerances. These minor adjustments may include filing a hole slightly, bending electrical rods, and/ or bending end plates.

The Bx88199 Light Bar, Receiver Mounted is recommended for this vehicle.

Installation Instructions:



1. From the plastic cover on the top edge of the fascia, remove eleven plastic screws from across the top. Remove the black plastic piece. Set plastic cover and screws aside to reinstall later.



2. Using a Phillips screwdriver, remove the Phillips screw just forward of the front tire on the wheel well. Do this to both sides of the vehicle. Set screws aside to reinstall later.

BX2713
2008 Kia Spectra 5
Installation Instructions



3. On the bottom corner of the fascia, just forward of the front tire, remove three pushpins. Do this to both sides of the vehicle. Set pushpins aside to reinstall later.



4. Remove four pushpins found on the bottom of the fascia. Set pushpins aside to reinstall later.



5. Up underneath by the tow hook, remove the Phillips pushpin at the front of the wheel well. Do this to both sides of the vehicle. Set pushpins aside to reinstall later.



6. Use a screwdriver to pry up on the little clip underneath the headlight in order to remove the fascia. Do this to both sides of the vehicle. Carefully pull fascia forward to remove. Then set fascia aside to be reinstall later.



BX2713

2008 Kia Spectra 5

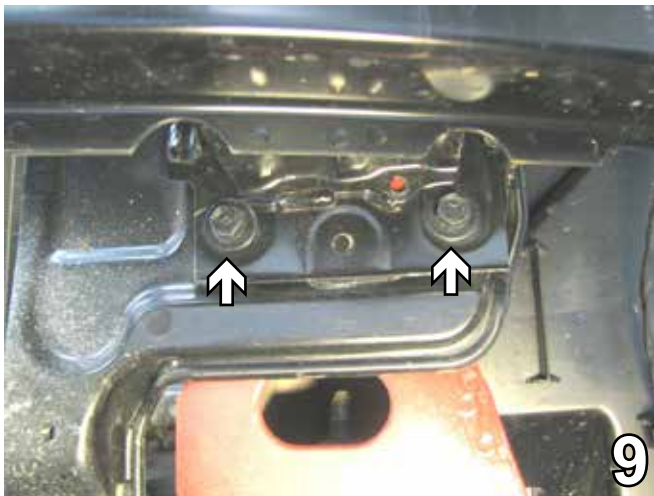
Installation Instructions



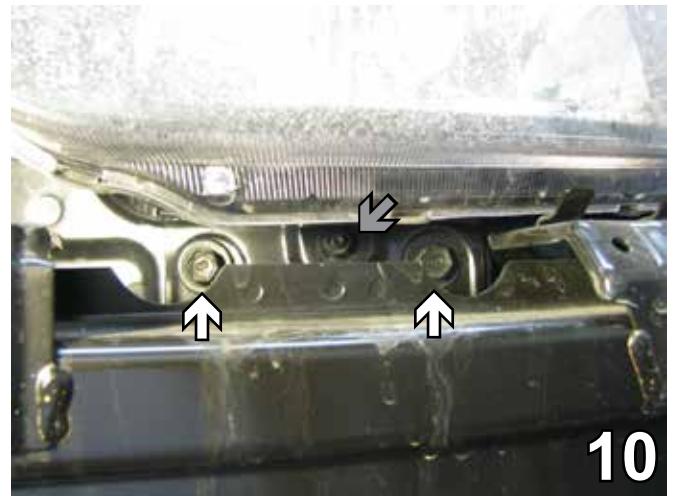
7. In order to remove the headlights, use a 10MM socket to remove the two bolts on the top. Do this on both sides of the vehicle. Set bolts aside to be reinstalled later.



8. On the back side, use a 10MM wrench to remove the nut holding the headlights. Do this on both sides of the vehicle. Set the headlights and the nuts aside to be reinstalled later.



9. The bumper core will be taken off next. Begin by using a 12MM socket to remove the two bolts below the bumper. Do this on both sides of the vehicle. Set the bolts aside to be reinstalled later.

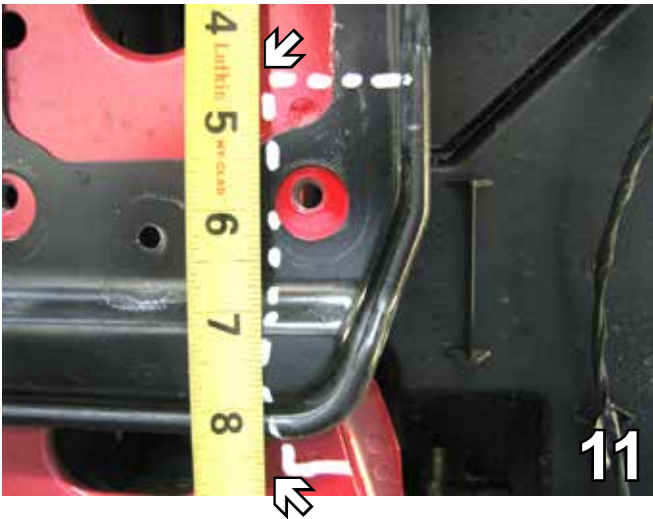


10. Use a 12 MM socket to remove two bolts on top of the bumper. Also use a 10MM socket to remove the bolt in the center (gray arrow). Remove the bumper core. Do this on both sides of the vehicle. Set the bolts and bumper core aside to be reinstalled later.

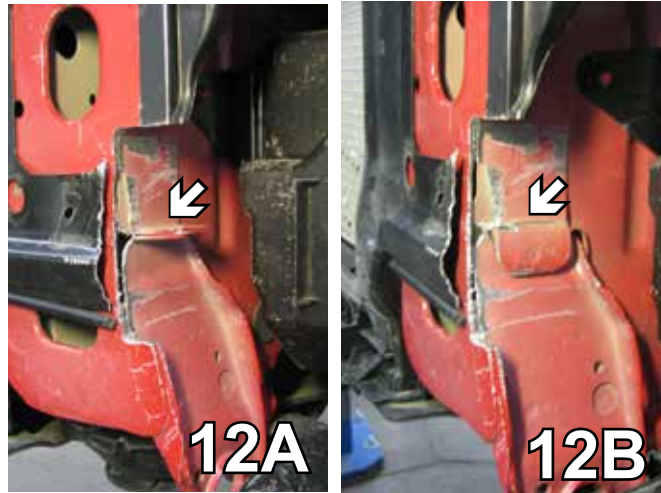
BX2713

2008 Kia Spectra 5

Installation Instructions



11. Mark an area to be trimmed on the bumper bracket on the frame end. Measure down from the top of the bumper 4 3/4" for the top horizontal cut and 8 3/4" for the lower horizontal cut. Mark a vertical line 1 5/8" in. Use a reciprocating saw to make the cut. Do this on both sides of the vehicle.



12. On the side of the frame, bend the tab straight down with the hammer. Do this on both sides of the vehicle. Paint the newly cut area.

Using a good quality paint, spray cut edges of frame to prevent rusting.



13. On the back side of the bumper, mark an area 2 1/4" up and 1 1/4" wide. With the metal bumper on a stable surface, use the reciprocating saw to cut the marked area. Do this on both ends of the bumper.



14. On the bumper also using a reciprocating saw, cut 2 1/4" over from the edge and back to the weld. Do this on both sides of the vehicle.

BX2713

2008 Kia Spectra 5

Installation Instructions



15. Slide the baseplate on. On the driver's side, the middle back hole slides over the existing nut (gray arrow). Be sure the baseplate is level. Using a large vise grip, clamp the baseplate into place. Do this to both sides of the vehicle.

****BE SURE TO USE LOCTITE® RED ON ALL BOLTS BEFORE TIGHTENING. TIGHTEN ALL BOLTS ACCORDING TO THE TORQUE CHART ON PAGE 1 OF THESE INSTRUCTIONS OR ON PAGE 3 OF THE BASEPLATE TOWING GENERAL INSTRUCTIONS.**



16. On the driver's side, drill the lower back hole first. Using the baseplate as a template, drill into the frame using a 13/32" drill bit. Insert 3/8-16 x 1 1/2" hex bolt with 3/8" lock washer and tighten to 3/8-16 nut plate. Guide the nut plate through the opening in the frame and the frame rail opening to align with the baseplate hole. Be sure to use Loctite Red on all the bolt.



17. On the passenger side, drill the bottom hole first. Again using the baseplate as a template, drill into the frame using a 13/32" drill bit. Insert 3/8-16 x 1 1/2" hex bolt with 3/8" lock washer and tighten to 3/8-16 nut plate. Guide the nut plate through the opening in the frame and the frame rail opening to align with the baseplate hole. Be sure to use Loctite Red on the bolt.

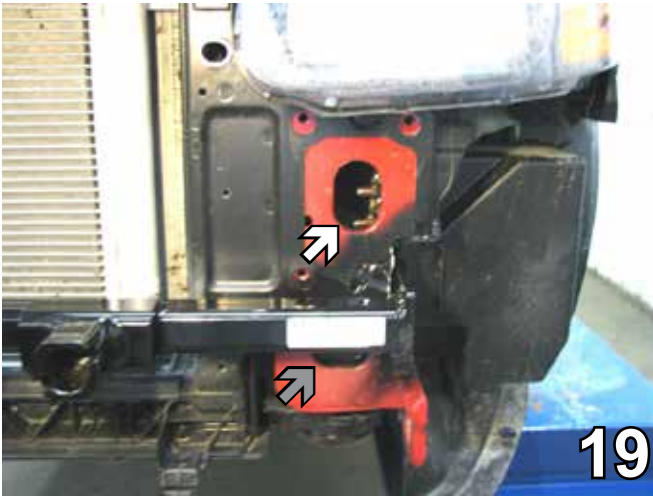


18. Using the baseplate as a template, drill the remaining three holes into the frame on each side using a 13/32" drill bit. Insert 3/8-16 x 1 1/2" hex bolts with 3/8" lock washers and tighten to 3/8-16 nut plates. Be sure to use Loctite Red on all the bolt.

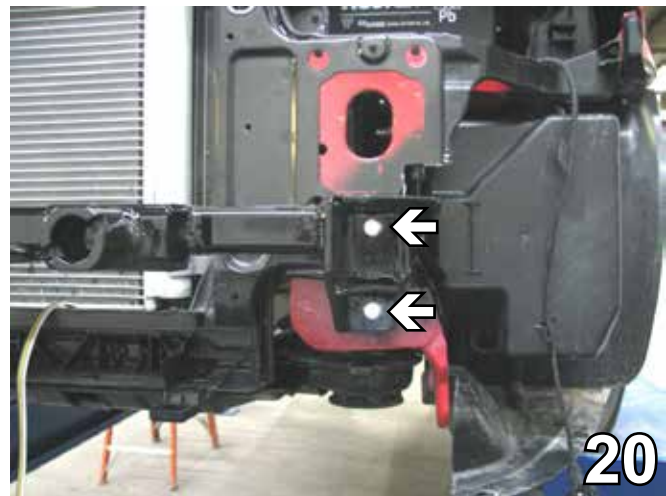
BX2713

2008 Kia Spectra 5

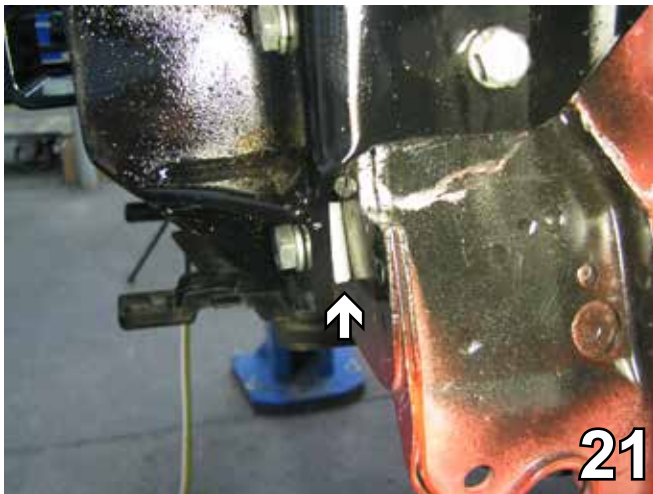
Installation Instructions



19. Guide the top three nut plates through the top opening and the bottom one through the bottom opening (gray arrow).



20. Two additional holes need to be drilled on the front of the frame. Still using the baseplate as a template, drill into the frame using a 13/32" drill bit. Do this on both sides of the vehicle.



21. Insert 3/8-16 x 1 1/2" hex bolts with 3/8" lock washers and a 1/4" x 1" spacer between the baseplate and the frame. Be sure to use Loctite Red on all the bolts.



22. Attach baseplate safety cables around the lower frame extension, or as close as possible. If you are unable to place safety cables in this position, position the cables around a solid piece of the frame.

23. Reinstall the bumper, headlights, fascia and the plastic cover, inserting all screws, pushpins, and bolts. Installation of baseplate is complete.

Be sure that ALL electrical connections are plugged in properly and functioning BEFORE installing the fascia.

BX2713

2008 Kia Spectra5

Installation Instructions

DEALER or INSTALLER:

Be certain the user receives the instruction sheets for their products.

Install the tow bar and safety cables according to the instructions when demonstrating this to the customer. Be sure to include all the contents and packages.

Do **NOT** substitute other devices if the tow bar pins and clips are misplaced.



CUSTOMER SERVICE COMMITMENT

Blue Ox is committed to providing you with exceptional customer care throughout your lifetime with our products. Our team is here to assist you with any questions you may have regarding the performance of your product. Simply call 1-800-228-9289 and you can speak with our customer care team.

Additionally, please visit our website to see which rallies our Destination America team will be attending. For a nominal fee, our service technician will service your towing system to ensure it's in proper working condition. Also as a commitment to our customers, should you visit our factory you can stay at our full service Blue Ox campground at no charge along with enjoying a factory tour.

Again thank you for being our customer and for the confidence you have shown in the performance of our products. It is because of customers like you we enjoy the success we have today.



© 2009 Blue Ox
One Mill Road, Industrial Park
Pender, Nebraska 68047
Phone: (402) 385-3051
Toll Free: (888) 425-5382
Fax: (402) 385-3360
www.blueox.us
1/12/09

General Information

1. Ensure that your product(s) are registered online at www.blueox.com. It is crucial to register your product(s) so that you may be alerted of product offerings, updates, upgrades, maintenance and safety bulletins, and/or recalls.
2. **It is the owner's responsibility to inspect all towing equipment for cracked welds, missing or worn parts and loose bolts before each towing trip.** Be sure to use Loctite® Red on all bolts and tighten to the recommended specifications.
3. **It is the owner's responsibility to hook up all towing equipment per manufacturer's instructions/recommendations.**
4. Remove the attachment tabs when not in use (if applicable).

Notice To Baseplate Installer

1. It is YOUR responsibility to watch for:

- Oil cooler and air conditioner lines
- Electrical wires and hoses
- Missing parts or attaching points on the frame

** If the baseplate is improperly installed and is against a wire or hose, it could cause fluid leaks or electrical shorts some time after the actual baseplate installation.

Permanent Baseplate Safety Cable Installation

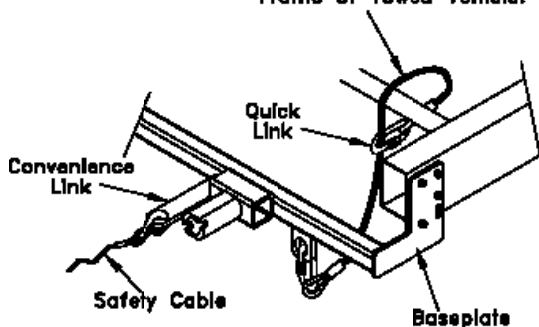
Permanent baseplate safety cables are strongly recommended when towing a vehicle with a tow bar. The principle function of the permanent baseplate safety cables is to prevent the towed vehicle from breaking loose in the event the connection between the frame of the towed vehicle and the baseplate fails or becomes disconnected. The cables must be connected from the baseplate to the frame rail or cross member of the vehicle's frame. The illustrations below show the possible arrangements recommended by Blue Ox®. Each permanent baseplate safety cable must have an adequate weight rating for the towing system. The weight rating of the two (2) cables together will not qualify.

Do not mount the permanent baseplate safety cables against wires, hoses or brake lines.

These permanent baseplate safety cables should remain installed as long as the baseplate is installed on the vehicle. Permanent baseplate safety cables are to be used in conjunction with, and NOT a replacement for legally required safety cables attaching the towed vehicle to the towing vehicle.

OPTION #1

Permanent Baseplate Safety Cables to Cross Member or Frame of Towed Vehicle.



OPTION #2

Permanent Baseplate Safety Cables to Cross Member or Frame of Towed Vehicle.

