



BX3604 Installation Instructions 1997-99 Subaru Legacy Outback

Utilization of Blue Ox baseplates with any tow bar not approved by Automatic Equipment Mfg. Co. invalidates the limited warranty.

1. The front bumper molding, headlights, fog lights and turn signal assemblies will need to be removed to install the baseplate. The molding around the fog lights and the styrofoam insert of the bumper will need to be trimmed to re-install the bumper molding.
2. Remove the turn signal assemblies by removing the screw on the top of the assembly molding. The turn signal assemblies will pull out once the screw is removed. Next remove the bolts (4) from the headlight assemblies, one bolt is behind the center grill which connects the grill and the headlights. Using a small flathead screw driver push in the snaps (4 on top and 2 on the bottom) of the center grill.
3. Remove the upper and lower push pins of the bumper molding. Remove the two (10MM) bolts on the bottom of the bumper molding. There are also two (10MM) bolts that connect the quarter panels and the bumper molding, remove these also. Now pull the bumper molding off.
3. Notice the tow hook brackets on each side of the frame, bolt the baseplate (Item 1), the oval shaped tow hook inserts (Item 3) and the flat plates (Item 4) as shown in the diagram on page two. **NOTE: USE LOCTITE BLUE WITH EACH BOLT TO ENSURE THEY WILL NOT LOOSEN WHILE VEHICLE IS BEING TOWED.**
4. Use the 8mm bolts and washers (Items 5, 6 and 7) to bolt the upper braces to the bottom cross frame. It will be necessary to remove existing bolts so the upper braces can be bolted to the frame. **NOTE: USE LOCTITE BLUE WITH EACH BOLT.**
6. Tighten all the bolts of the baseplate.
7. To replace the bumper molding trim the inside plastic around the fog lamps and the styrofoam insert to clear the upper braces of the baseplate.
8. Install the tow bar and safety cables according to the instructions included in their packages.
9. The dimensional variations between otherwise identical cars can be considerable. While the location and size of the holes in the baseplate were designed to allow for easy installation, it may be necessary to file a hole slightly to allow a bolt to clear.
10. Do not substitute other devices if the tow bar pin and clip are lost.
11. **DEALER OR INSTALLER: BE SURE OWNER RECEIVES THE INSTRUCTION SHEET.**

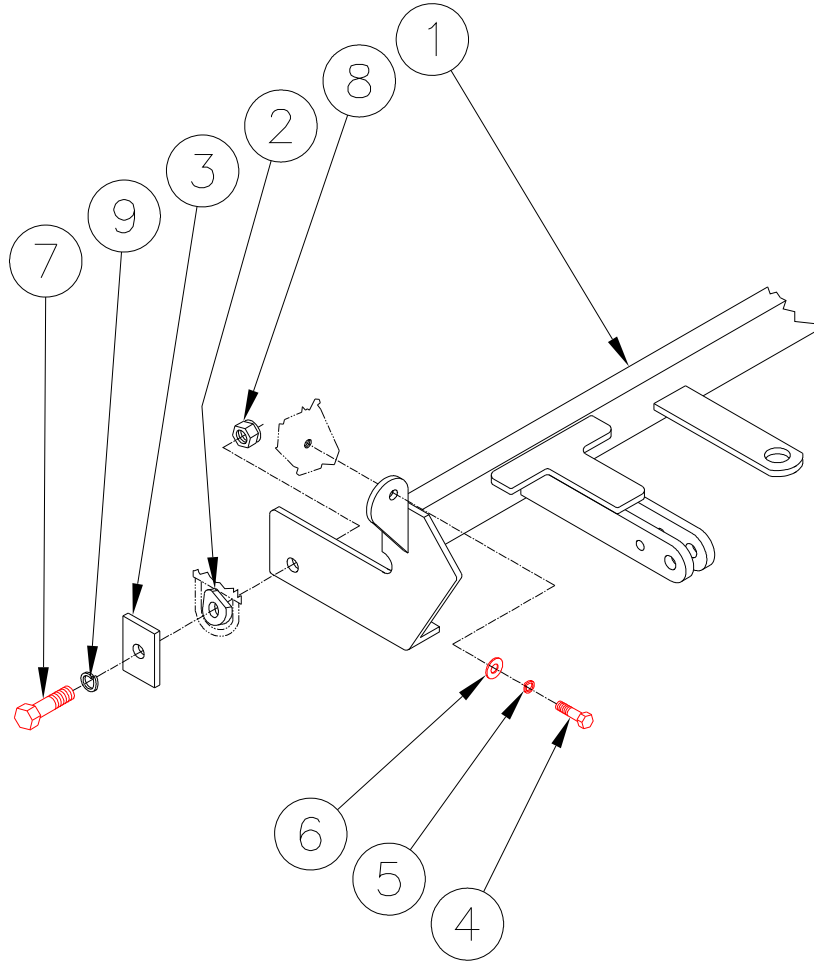
Automatic

Tools Required

10MM Socket
 3/4" Socket
 Phillips Screw Driver
 Utility Knife

10MM Wrench
 Ratchet
 Flat Head Screw Driver
 Knuckle (For Ratchet)

3/4" Wrench
 Long Extension
 Loctite Blue



Parts List

Ref. No.	Qty.	Part No.	Description
1	1	61-5131	Weldment, Baseplate
2	2	101-5723	Insert, Tie Down Bracket
3	2	102-5361	Side Stop, BX3604
4	2	201-0418	8MM-1.25 x 35MM Bolt
5	2	203-0102	8MM Lock Washer
6	2	203-0107	8MM Flat Washer
7	2	201-0051	1/2-13 x 1 1/2 Hex Bolt Grade 5
8	2	202-0005	1/2 Hex Nut
9	2	203-0012	1/2 Lock Washer
	2	226-0046	Baseplate Safety Cable, 36" CL III (Not Shown)
	4	229-0359	Quicklink, 3/8, ZP (Not Shown)

General Information

1. Ensure that your product(s) are registered online at www.blueox.com. It is crucial to register your product(s) so that you may be alerted of product offerings, updates, upgrades, maintenance and safety bulletins, and/or recalls.
2. **It is the owner's responsibility to inspect all towing equipment for cracked welds, missing or worn parts and loose bolts before each towing trip.** Be sure to use Loctite® Red on all bolts and tighten to the recommended specifications.
3. **It is the owner's responsibility to hook up all towing equipment per manufacturer's instructions/recommendations.**
4. Remove the attachment tabs when not in use (if applicable).

Notice To Baseplate Installer

1. It is YOUR responsibility to watch for:

- Oil cooler and air conditioner lines
- Electrical wires and hoses
- Missing parts or attaching points on the frame

** If the baseplate is improperly installed and is against a wire or hose, it could cause fluid leaks or electrical shorts some time after the actual baseplate installation.

Permanent Baseplate Safety Cable Installation

Permanent baseplate safety cables are strongly recommended when towing a vehicle with a tow bar. The principle function of the permanent baseplate safety cables is to prevent the towed vehicle from breaking loose in the event the connection between the frame of the towed vehicle and the baseplate fails or becomes disconnected. The cables must be connected from the baseplate to the frame rail or cross member of the vehicle's frame. The illustrations below show the possible arrangements recommended by Blue Ox®. Each permanent baseplate safety cable must have an adequate weight rating for the towing system. The weight rating of the two (2) cables together will not qualify.

Do not mount the permanent baseplate safety cables against wires, hoses or brake lines.

These permanent baseplate safety cables should remain installed as long as the baseplate is installed on the vehicle. Permanent baseplate safety cables are to be used in conjunction with, and NOT a replacement for legally required safety cables attaching the towed vehicle to the towing vehicle.

OPTION #1

Permanent Baseplate Safety Cables to Cross Member or Frame of Towed Vehicle.



OPTION #2

Permanent Baseplate Safety Cables to Cross Member or Frame of Towed Vehicle.

