

INSTRUCTION SHEET

1984-87 Toyota Corolla SR-5 Sport (RWD)

Style 3709

NOTICE

1. THIS TOW BAR IS DESIGNED TO BE PARALLEL TO THE GROUND WHEN IT IS ATTACHED TO BOTH THE TOWED AND TOWING VEHICLES. IF THE TOW BAR IS AT AN ANGLE, THERE IS A RISK OF DAMAGE OR ACCIDENT.
2. THIS TOW BAR HAS BEEN DESIGNED TO TOW A MANUAL TRANSMISSION CAR OR AN AUTOMATIC WHICH HAS BEEN EQUIPPED WITH A SUITABLE PUMP OR DRIVESHAFT DISCONNECT.
3. BE SURE THE CAR BEING TOWED IS PROPERLY ALIGNED.
4. USE SAFETY CHAIN (SEE SKETCH). BLUE OX STYLE #8804 SAFETY CHAIN KIT IS RECOMMENDED.
5. DO NOT BACK UP WHEN TOWING. BACKING UP WILL DAMAGE THE TOW BAR.
6. UNLOCK STEERING WHEEL TO ALLOW FRONT WHEELS OF TOWED VEHICLE TO "TRACK".
7. PRIOR TO STARTING ON A TOWING TRIP, CHECK TO BE SURE ALL TOWING ACCESSORIES AND ATTACHMENT POINTS ARE SECURE; IE. ALL BOLTS TIGHT AND NO CRACKED WELDS. THIS IS IMPORTANT ON ALL OCCASIONS BUT PARTICULARLY ON A NEW INSTALLATION. ALL BOLTED CONNECTIONS AND WELDMENTS ON A NEW INSTALLATION SHOULD BE CHECKED JUST PRIOR TO INITIAL TOWING AND AGAIN AFTER 100-200 MILES OF TOWING.
8. AVOID SHARP TURNS AND ROUGH TERRAIN!. CHECK INSTALLATION AFTER ANY UNUSUAL EVENT AND PERIODICALLY ON A LONG TRIP. CHECK VEHICLE TO VEHICLE CLEARANCE IN TURNING.
9. DO NOT USE TOWED VEHICLE FOR STORING LUGGAGE, ETC. AS YOU MAY EXCEED THE TOWING CAPACITY OF THE TOW BAR.
10. ADJUST THE COUPLER FOR PROPER FIT TO THE BALL (SEE COUPLER ADJUSTMENT). FOR ADDED SECURITY, PLACE A LOCK, PIN OR BOLT THROUGH THE HOLE PROVIDED IN THE COUPLER LOCKING LEVER.

PARTS LIST

Qty./Part number

- | | |
|---|---|
| 1 | TOW BAR |
| 1 | BASE PLATE, BX3709 |
| 2 | 200-1316, PIN, 1/2 X 2 1/2 EFF., W/CLIP |

TOOLS

- | |
|-------------|
| 17MM SOCKET |
| 19MM SOCKET |

SPECIAL NOTICE

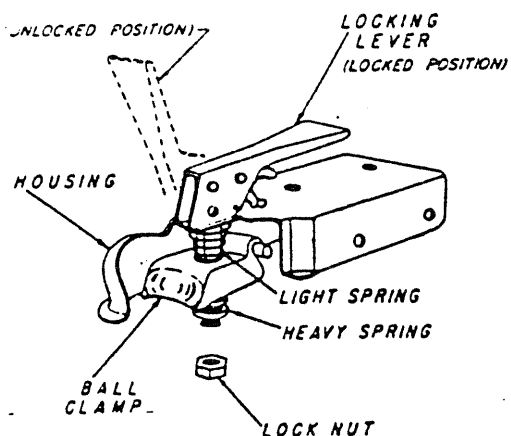
THIS TOW BAR IS DESIGNED TO USE EXISTING HOLES AND HARDWARE TO MOUNT THE BASE PLATE ON THE CAR. EVEN THOUGH THE BOLT IS THERE, HOWEVER, DO NOT ASSUME IT IS ADEQUATE FOR MOUNTING THE BASE PLATE. MANUFACTURERS MAKE MANY CHANGES IN HARDWARE BOTH WITHIN AND BETWEEN MODEL YEARS. BE SURE THE BOLT IS LONG ENOUGH TO PROTRUDE PAST THE NUT A DISTANCE NO LESS THAN THE DIAMETER OF THE BOLT, AFTER THE BASE PLATE IS MOUNTED. THE THREADS SHOULD BE IN "AS NEW" CONDITION AND IT IS RECOMMENDED THAT "LOCTITE" BE USED. IF A NEW BOLT IS REQUIRED, BE SURE IT IS SAE GRADE 5 OR BETTER.

INSTALLATION

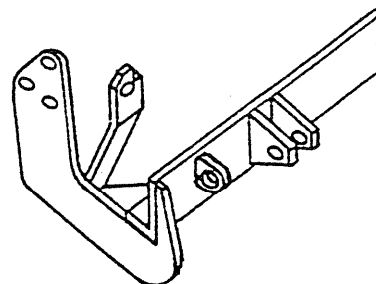
1. THE TOW BAR ASSEMBLY CONSISTS OF A PERMANENTLY MOUNTED BASE PLATE AND A DETACHABLE TOW BAR.
2. THE BASE PLATE MOUNTS TO THE FRONT UNDERSIDE OF THE CAR USING EIGHT EXISTING BOLTS; FOUR ON EACH SIDE OF THE CAR.

3. REMOVE THE "TIE DOWN" BRACKETS FROM THE FRONT UNDERSIDE. THESE ARE STAMPED METAL PARTS WITH AN OVAL FACING DOWN WHICH ARE SECURED TO EACH SIDE BY THREE BOLTS. INSPECT THE BOLTS AS THESE WILL BE USED AGAIN (SEE SPECIAL NOTICE). THE BRACKET WILL NOT BE USED.
4. REMOVE THE TWO BOLTS HOLDING THE BUMPER BRACKETS ON THE FRAME. THEY ARE LOCATED IN FRONT, UNDER THE TURN SIGNALS, ONE ON EACH SIDE. INSPECT THESE BOLTS AS THEY WILL BE USED AGAIN (SEE SPECIAL NOTICE).
5. HOLD THE BASE PLATE IN POSITION ALIGNING THE EIGHT HOLES ON IT WITH THE LOCATIONS WHERE THE BOLTS WERE REMOVED. HAND START ALL BOLTS TO CHECK ALIGNMENT.
6. THE DIMENSIONAL VARIATIONS BETWEEN OTHERWISE IDENTICAL CARS CAN BE CONSIDERABLE. WHILE THE LOCATION AND SIZE OF THE HOLES IN THE BASE PLATE WERE DESIGNED TO FACILITATE EASY INSTALLATION, IT MAY BE NECESSARY TO FILE A HOLE SLIGHTLY TO ALLOW A BOLT TO CLEAR.
7. WHEN ALL BOLTS ALIGN, ATTACH THE BASE PLATE TO THE CAR (SEE SPECIAL NOTICE).
8. WITH THE BOLTS PROPERLY INSTALLED, YOU ARE READY TO INSTALL THE TOW BAR. HOLD THE TOW BAR IN POSITION WITH THE TABS ALIGNED INSIDE THE TABS OF THE BASE PLATE AND INSERT THE PINS. SLIDE THE HAIRPIN CLIPS THROUGH THE HOLES IN THE PINS. INSTALL A SAFETY CHAIN AND ADJUST THE COUPLER.
9. DO NOT SUBSTITUTE OTHER DEVICES IF THE PIN AND CLIP ARE LOST.

COUPLER FIT ADJUSTMENT

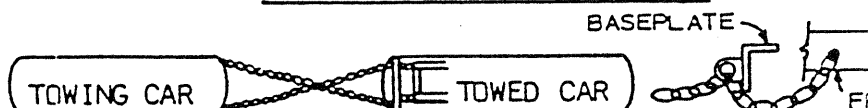


1. ADJUST COUPLER TO BALL BY TURNING THE NUT. TIGHTEN OR LOOSEN NUT UNTIL FIRM CONTACT BETWEEN COUPLER AND BALL IS ESTABLISHED.
2. CHECK BALL TO HOUSING TENSION PERIODICALLY AND TIGHTEN IF NECESSARY.



TOYOTA COROLLA SR5

SAFETY CHAIN RECOMMENDATION



1. "X" PATTERN BELOW TOW BAR SOLIDLY CONNECTED TO THE FRAME OF THE TOWING CAR AND TO THE BASE PLATE CONVENIENCE LOOPS.
2. PERMANENT CHAINS CONNECTED TO THE CONVENIENCE LOOPS AND TO THE FRAME OF THE TOWED CAR.
3. USE A CHAIN WITH THE SAME (OR GREATER) LOAD RATING THAT IS MARKED ON THE COUPLER.