



# BX2715 2010 -13 Kia Soul Installation Instructions

Serial Number

Attachment Tab Height: 15-1/2"

Attachment Tab Width: 26"

Please read BOTH these Installation Instructions and the General Instructions prior to installing or operating this equipment.

- Blue Ox® towing products and accessories are intended to be installed by Blue Ox® Dealers who are familiar with our products and have the equipment and knowledge necessary to do "fit work". If needed, Blue Ox® Dealers can be found at [www.blueox.com](http://www.blueox.com) or by contacting our Customer Care Department at (402) 385-3051.
- Many Blue Ox® baseplates are designed to use existing holes and hardware to mount the baseplate to the towed vehicle. Even though bolts are there, do not assume they are adequate for baseplate mounting. Always use the hardware supplied in the hardware kit and existing hardware as specified in the installation instructions.

**Bolt Torque Specifications**  
Torque in Foot-Pounds for Metric Bolts

Bolt Size	Grade 8.8	Grade 10.9
6MM	6	8
8MM	16	22
10MM	31	40
12MM	54	70
14MM	89	117

**Bolt Torque Specifications**  
Torque in Foot-Pounds for Inch Bolts

Bolt Size	Grade 5	Grade 8
1/4"	10	14
5/16"	19	29
3/8"	33	47
7/16"	54	78
1/2"	78	119
5/8"	154	230



If the front of your vehicle looks different than this, please contact us at (402)385-3051.

**Reference your vehicle owner's manual for manufacturer's towing specifications.**

**! WARNING**

Failure to read and follow these instructions could result in separation of the towed vehicle from the tow bar, causing property damage, loss of towed vehicle, personal injury or death.

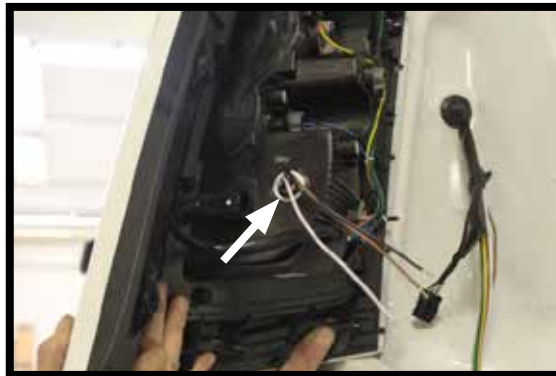
BX2715  
2010-13 Kia Soul  
Installation Instructions

**Instruction Notes:** The fascia, metal bumper, air box(if applicable) and windshield washer fluid reservoir are removed and reinstalled for the baseplate installation. Some drilling and trimming is required.

Place all components that are removed on a flat, sturdy surface. All items will be reinstalled unless otherwise noted after the baseplate is installed.

The dimensional variations between otherwise identical vehicles can be considerable. While the baseplate was designed for easy installation, it may be necessary to tailor the baseplate slightly to compensate for vehicle manufacturer's tolerances.

The BX8869 Tail Light Wiring Kit is recommended for this vehicle.



Drill a hole according to the tail  
light wiring kit instructions.

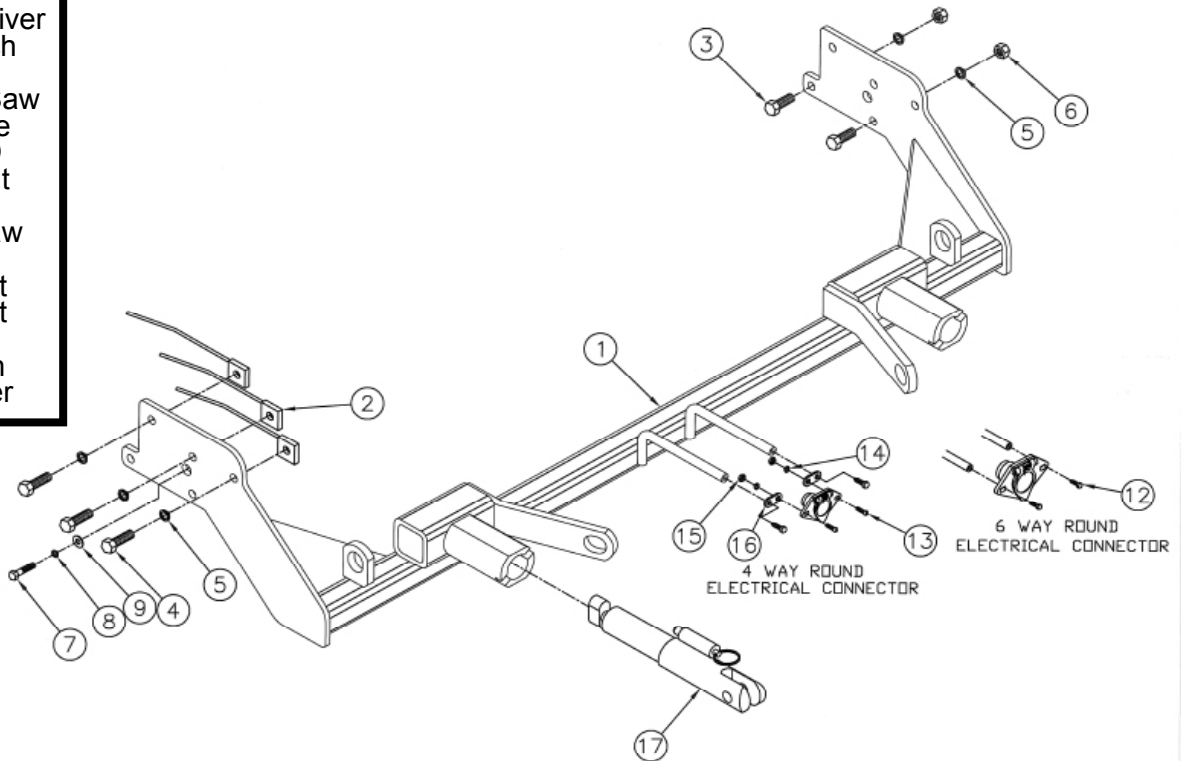
### **NOTICE**

- Handling of some cosmetic parts when installing this product may require the use of protective covers, rags, specialty tools, etc. to prevent damage.
- When using power drills be aware of the dangers of torque and drill bit length.
- When using a reciprocating saw be aware of objects behind the cutting surface.
- Use a good quality paint to spray cut edges of frame to prevent rusting.
- Be sure that **ALL** electrical connections are plugged in and accessories are functioning properly before reinstalling the fascia.
- Do not use the towed vehicle for storing luggage, equipment, etc. This may cause you to exceed the towing capacity of the tow bar, baseplate and its accessories.
- Be sure to use Loctite® Red on all bolts before tightening. Tighten all bolts according to the torque chart provided.
- Dealer or installer be certain the user receives these instruction sheet.

# BX2715 2010-13 Kia Soul Installation Instructions

## Tools Required

Large Vise Grip  
 Flat Screwdriver  
 Utility Knife  
 Phillips Screwdriver  
 Torque Wrench  
 Drill  
 Reciprocating Saw  
 Tape Measure  
 Loctite® RED  
 13/32" Drill Bit  
 1/4" Drill Bit  
 1-1/4" Hole Saw  
 8MM Socket  
 10MM Socket  
 12MM Socket  
 9/16" Socket  
 9/16" Wrench  
 3/8" Nut Driver



Item No.	Part No.	Description	Qty.
1	61-6647	BX2715 Baseplate	1
2	61-5208	3/8"-16 Nut Plate w/14" Wire	6
3	201-0443	3/8"-16 x 1" Hex Head Bolt, Grade 5, ZP	4
4	201-0368	3/8"-16 x 1-1/4" Hex Head Bolt, Grade 5, ZP	6
5	203-0010	3/8" Lock Washer, ZP	10
6	202-0003	3/8"-16 Hex Nut, ZP	4
7	201-0655	6MM-1.0 x 30MM Hex Head Bolt, Grade 8.8, ZP	1
8	203-0161	6MM Lock Washer, ZP	1
9	203-0001	1/4" Flat Washer, ZP	1
10	201-0071(not shown)	1/4"-20 x 1" Hex Head Bolt, Grade 5, ZP	1
11	202-0069(not shown)	1/4"-20 Hex Flange Whiz Nut, ZP	1
12	201-0979	#12-14 x 1" Self Drilling Screw, ZP	2
13	201-0192	#10-32 x 1/2" Round Slot Head Screw	2
14	203-0054	#10 Lock Washer	2
15	202-0047	#10-32 Hex Nut	2
16	101-5822	4 Way Connector Adapter	2
17	62-3469	Attachment Tab Assembly, REM, SF/LB, 1Hole	2
18	226-0046(not shown)	Class III Safety Cables	2
19	229-0359(not shown)	3/8" Quicklink, ZP	2
20	290-0437(not shown)	Black Cap Plug Receiver	2

## **Important:**

Use only genuine factory replacement parts on your baseplate. Do **NOT** substitute homemade or non-typical parts. If a bolt is lost or in need of replacement, for your safety and the preservation of your baseplate, be sure to use a replacement bolt of the same grade (In most cases it will be Grade 5, please reference the parts list above). Replacement parts may be ordered through your nearest Blue Ox® Dealer or Distributor. Failing to follow and/or altering these installation instructions in either installation or required equipment will void the manufacturer's warranty. Towing behind a non-motorized vehicle will void the warranty.

BX2715  
2010-13 Kia Soul  
Installation Instructions



1. Using a Phillips screwdriver, remove two plastic Phillips pushpins located on the driver's side front fascia (white arrows, continued in step 2). Using a 10MM socket, remove one metric bolt (gray arrows).
2. Using a Phillips screwdriver, continue removing three plastic Phillips pushpins located on the passenger side (white arrows). Using a 10MM socket, remove one metric bolt (gray arrows).



3. Using a Phillips screwdriver or an 8MM socket, remove one plastic Phillips pushpin just forward of the front tire on the wheel well. Do this to both sides of the vehicle.

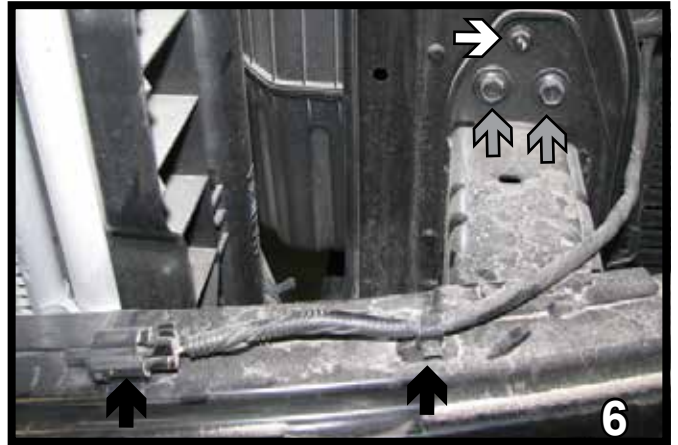


4. Using a Phillips screwdriver, remove four plastic Phillips pushpins from just forward of the front tire along the bottom edge of fascia. Do this to both sides of the vehicle. Set pushpins aside to be reinstalled later.

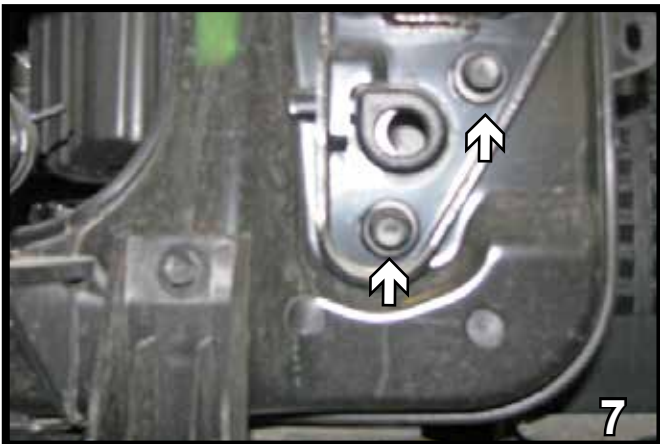
BX2715  
2010-13 Kia Soul  
Installation Instructions



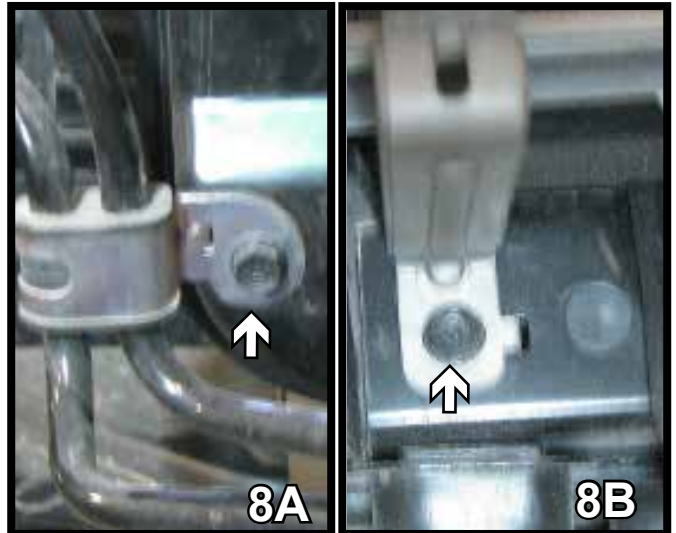
5. The fascia is then ready to be removed from the vehicle by grabbing in front of the tire, lift and pull the fascia ends out to the side to release and then pulling it forward. Use a screwdriver to pop the fascia over the knob at the end (white arrow). Do this to both sides of the vehicle. Set fascia aside carefully.



6. Lift up the two tabs holding the temperature sensor to the bumper (black arrows). Using a 10MM socket, remove the top bolt above the bumper (white arrow on top). Use a 12MM socket to remove the other two bolts (gray arrows). Remove the bolts from the bumper on both sides of the vehicle.

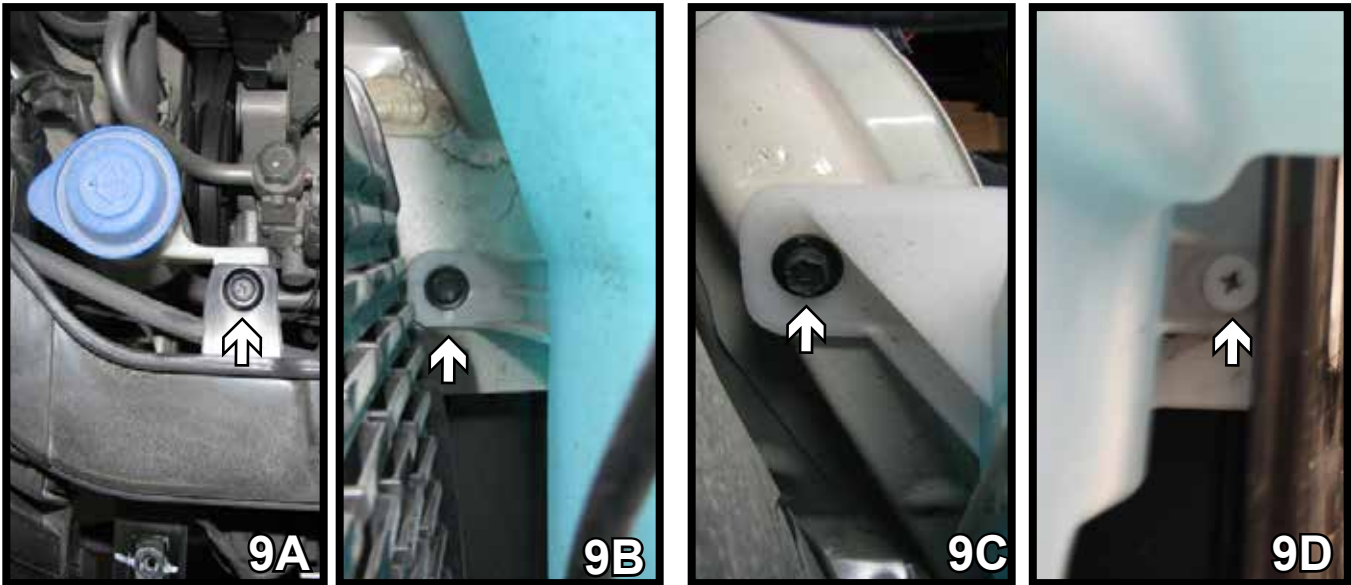


7. Using a 12MM socket, remove the two bolts below the bumper. Do this to both sides of the vehicle.



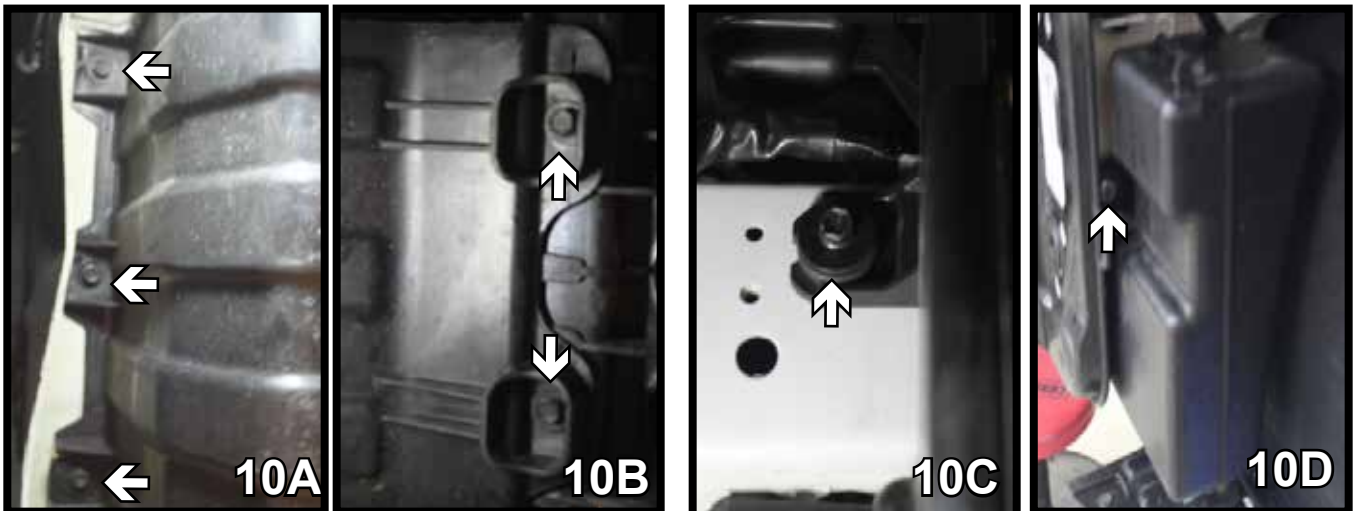
8. If equipped with coolant lines, on the passenger side, using a 10MM socket remove the two bolts supporting the coolant line up. Let the line hang down during the cutting.

BX2715  
2010-13 Kia Soul  
Installation Instructions



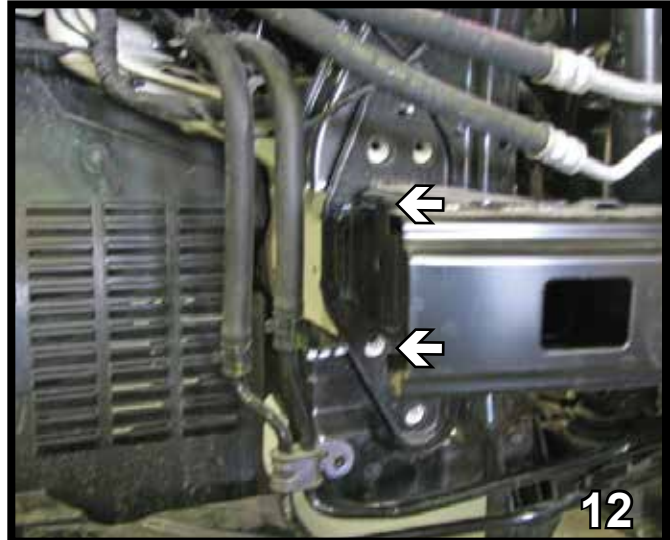
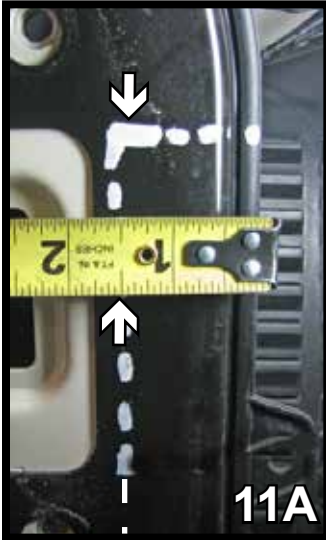
9. On the passenger side, to remove the washer reservoir, remove the plastic push pin on top (9A). Using a 10MM socket, remove the two bolts one above the other (9B & 9C). Remove the screw on the right side to remove the washer reservoir (9D). Disconnect the hoses and wires and plug the hoses.

**2013 Models Only**



10. On the driver side, using a 8MM socket, remove the air box and shielding. On the underside of the vehicle, remove the three (3) screws from the side of the shield (10A) and the two (2) screws at the front of the shield (10B). After removing the shield remove the one (1) screw from the inside of the frame (10C). On the topside of the air box remove the one (1) screw (10D), then remove the airbox from the vehicle.

BX2715  
2010-13 Kia Soul  
Installation Instructions



11. Mark straight over 1 1/2" from the end of the frame. Using a reciprocating saw, trim over and straight down 4" flush with the bottom of the frame. Do this to both sides of the vehicle.

12. Reinstall the bumper, mark where the bumper needs to be trimmed to match the frame behind. Use a reciprocating saw to trim the bumper. Do this on both sides of the vehicle.



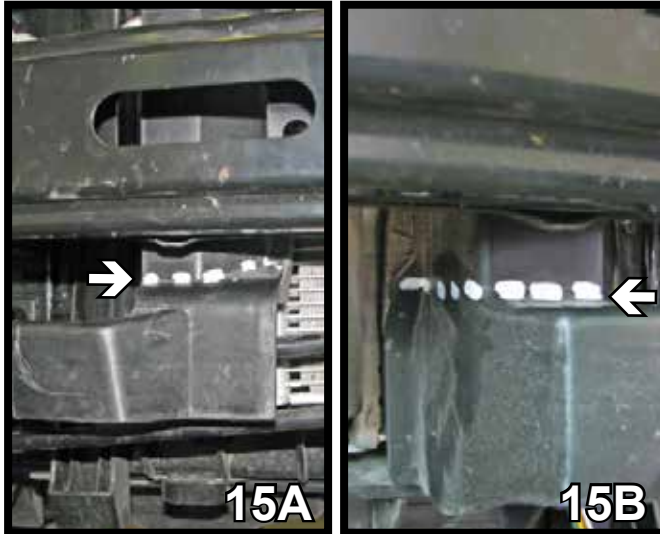
13. On the driver's side, the two ground wires need to be moved. Drill a 1/4" hole above. Attach both wires to the hole with 1/4-20 x 1" hex bolt and 1/4-20 whiz hex nut.



14. On the 2013 Models only, using a 8MM socket, remove the three (3) lower bolts (14A) and the upper bolt (14B) from the lower air baffle. This baffle will not be reinstalled.

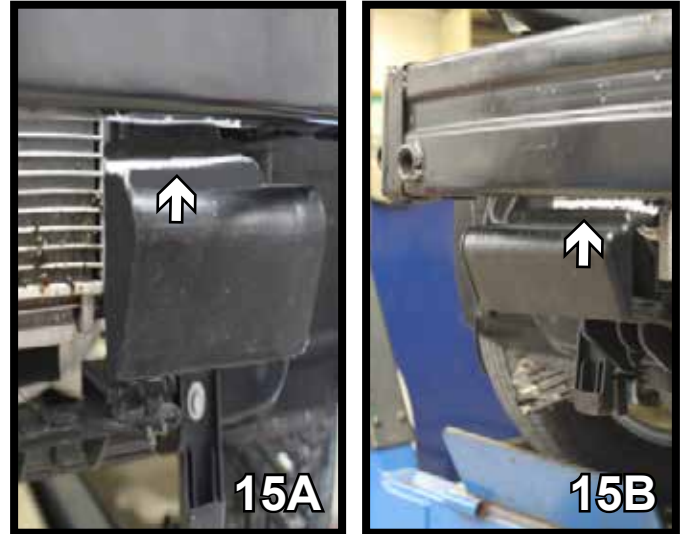
BX2715  
2010-13 Kia Soul  
Installation Instructions

**2010-12 Models**

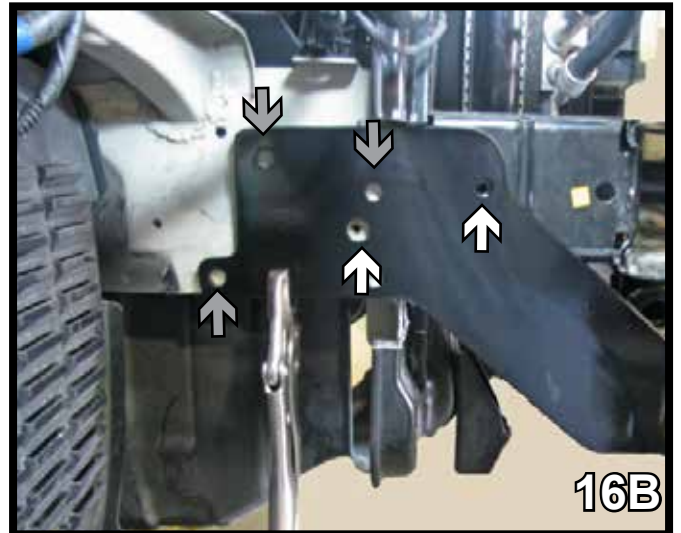
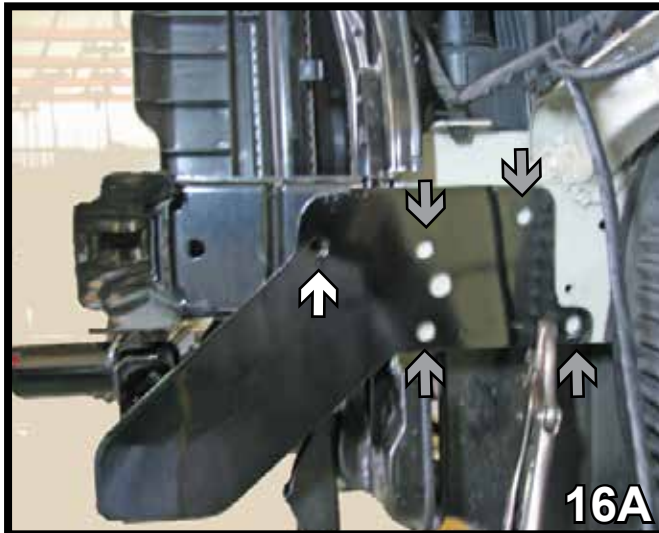


15. On the passenger side, cut straight across the seam of the air dam (15A). On the driver's side, cut straight across the air dam as shown (15B).

**2013 Models**



15. On the driver's side, cut straight across the air dam as shown (15A). On the passenger side, cut straight across the seam of the air dam (15B).

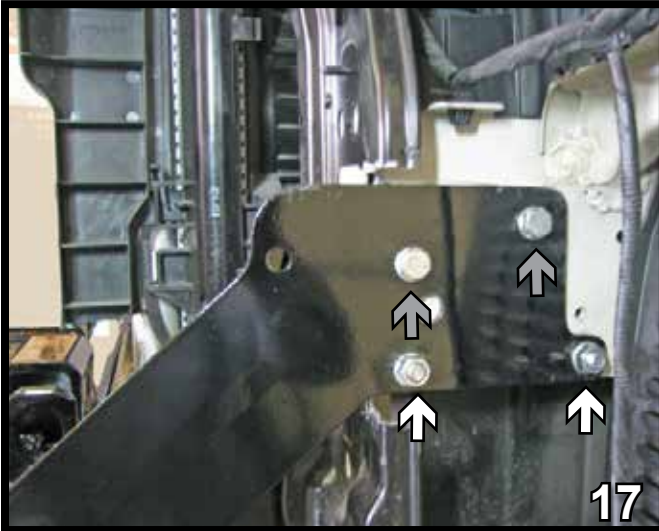


16. On the driver's side, slide the baseplate into place and line it up with the existing hole (white arrow-16A), flush with the bottom of the frame rail. Clamp with large vise grips. Always ensure baseplate remains level. On passenger's side, slide the baseplate into place and line it up with both existing holes (white arrows-16B), flush with the bottom of the frame rail. Clamp with large vise grips.

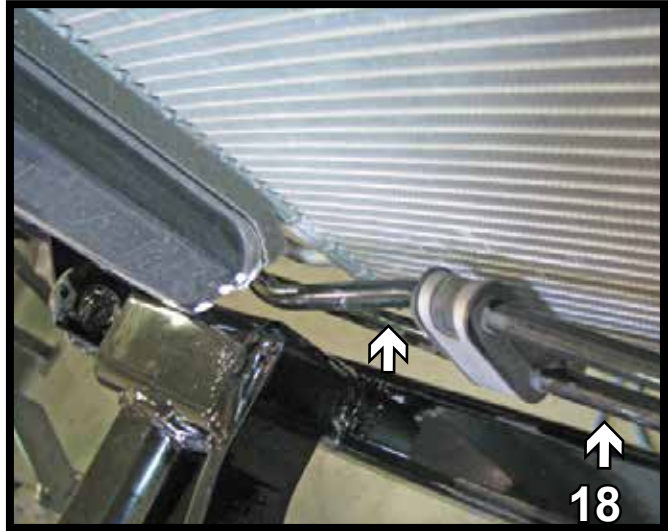
On driver's side, using the baseplate as a template with a 13/32" drill bit, drill four holes (gray arrows-16A). On passenger's side, using the baseplate as a template with a 13/32" drill bit, drill three holes (gray arrows-16B).



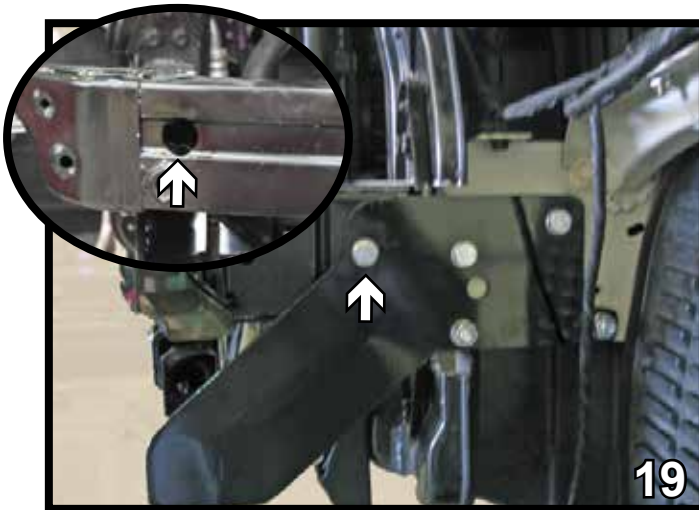
BX2715  
2010-13 Kia Soul  
Installation Instructions



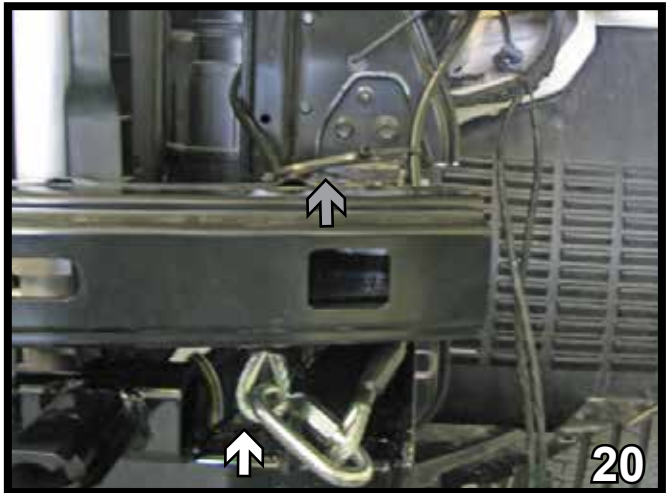
17. Insert 3/8"-16 x 1" hex bolts with Loctite from back to front with a 3/8" lock washers and 3/8"-16 hex nuts into the bottom two holes (white arrows). Insert 3/8"-16 x 1-1/4" hex bolts with Loctite and 3/8" lock washers and tighten to 3/8"-16 nut plates inserted into the frame in the top two holes. Do this to both sides of the vehicle.



18. On the passenger side, bend the transmission coolant line out of the way of the baseplate.



19. Reinstall the bumper. Insert another 3/8"-16 x 1-1/4" hex bolt and 3/8" lock washer and tighten to a 3/8"-16 nut plate. Do this to both sides of the vehicle. Reattach the temperature sensor. **On 2013 Models, using a 1-1/4" hole saw, drill a hole thru the front of the bumper as shown for an access hole. Repeat on the other side of the vehicle.**

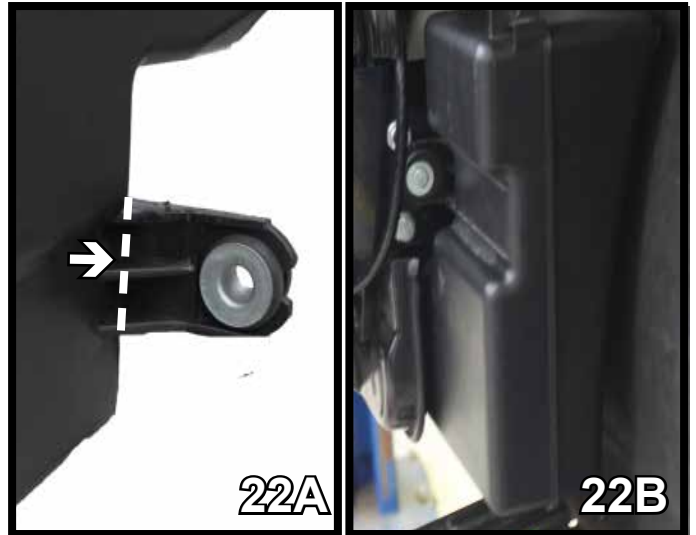


20. Attach permanent baseplate safety cables to the convenience link on the baseplate. Wrap the cables around the vehicle frame. Additional options may interfere with suggested mounting, in this case secure the cables to a solid piece of the frame as described in instructions included with the permanent baseplate safety cables. Clamp the cables together so they can't rub (gray arrow). Be sure the safety cables do not rub against any hoses or moving parts. Do this to both sides of the vehicle.

BX2715  
2010-13 Kia Soul  
Installation Instructions



21. On the passenger side, reinstall the washer reservoir with two existing bolts. On the right side, use a 6MM hex bolt with 6MM lock washer and 1/4" flat washer that are provided in the bolt bag. Trim if necessary. Reconnect all the hoses and wires.



22. Trim the lower arm from the air box as needed to clear the baseplate (22A), then reinstall the air box and skirt onto the vehicle with the existing hardware (22B).

23. Hold the fascia up to the vehicle. Mark where baseplate hits the fascia and trim as needed for clearance. Reinstall the fascia onto the vehicle.

### CUSTOMER SERVICE COMMITMENT

Blue Ox® is committed to providing you with exceptional customer care throughout your lifetime with our products. Our team is here to assist you with any questions you may have regarding the performance of your product. Simply call (402) 385-3051 and you can speak with our customer care team.

Additionally, please visit our website to see which rallies our Destination America team will be attending. For a nominal fee, our service technician will service your towing system to ensure it's in proper working condition. Also, as a commitment to our customers, should you visit our factory, you can stay at our full service Blue Ox® campground at no charge along with enjoying a factory tour.

Again, thank you for being our customer and for the confidence you have shown in the performance of our products. It is because of customers like you we enjoy the success we have today.

© 2013 Blue Ox  
One Mill Road, Industrial Park  
Pender, Nebraska 68047  
Phone: (402) 385-3051  
Fax: (402) 385-3360  
www.blueox.com

# General Information

1. Ensure that your product(s) are registered online at [www.blueox.com](http://www.blueox.com). It is crucial to register your product(s) so that you may be alerted of product offerings, updates, upgrades, maintenance and safety bulletins, and/or recalls.
2. **It is the owner's responsibility to inspect all towing equipment for cracked welds, missing or worn parts and loose bolts before each towing trip.** Be sure to use Loctite® Red on all bolts and tighten to the recommended specifications.
3. **It is the owner's responsibility to hook up all towing equipment per manufacturer's instructions/recommendations.**
4. Remove the attachment tabs when not in use (if applicable).

## Notice To Baseplate Installer

### 1. It is YOUR responsibility to watch for:

- Oil cooler and air conditioner lines
- Electrical wires and hoses
- Missing parts or attaching points on the frame

\*\* If the baseplate is improperly installed and is against a wire or hose, it could cause fluid leaks or electrical shorts some time after the actual baseplate installation.

## Permanent Baseplate Safety Cable Installation

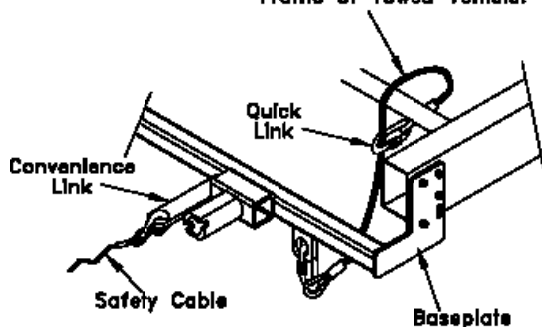
Permanent baseplate safety cables are strongly recommended when towing a vehicle with a tow bar. The principle function of the permanent baseplate safety cables is to prevent the towed vehicle from breaking loose in the event the connection between the frame of the towed vehicle and the baseplate fails or becomes disconnected. The cables must be connected from the baseplate to the frame rail or cross member of the vehicle's frame. The illustrations below show the possible arrangements recommended by Blue Ox®. Each permanent baseplate safety cable must have an adequate weight rating for the towing system. The weight rating of the two (2) cables together will not qualify.

***Do not mount the permanent baseplate safety cables against wires, hoses or brake lines.***

These permanent baseplate safety cables should remain installed as long as the baseplate is installed on the vehicle. Permanent baseplate safety cables are to be used in conjunction with, and NOT a replacement for legally required safety cables attaching the towed vehicle to the towing vehicle.

### OPTION #1

Permanent Baseplate Safety Cables to Cross Member or Frame of Towed Vehicle.



### OPTION #2

Permanent Baseplate Safety Cables to Cross Member or Frame of Towed Vehicle.

